

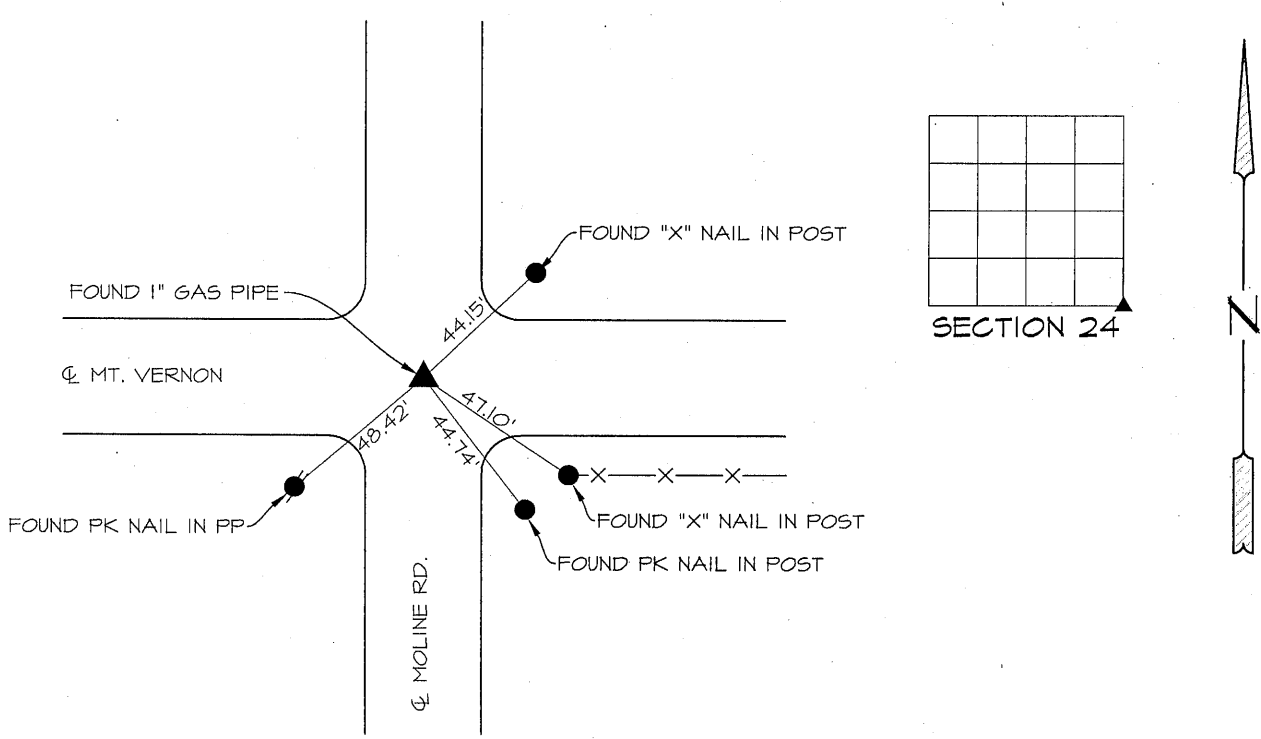
PREPARED BY PATRICK SHEPARD: CIVIL ENGINEERING CONSULTANTS, INC. - 2400 86th ST. #12 -DES MOINES, IOWA 50322

UNITED STATES PUBLIC LAND SURVEY CORNER CERTIFICATE
OF

LAND SURVEY MONUMENTS SITUATED IN SECTION 24, TOWNSHIP 90 NORTH, RANGE 13 WEST, OF THE FIFTH PRINCIPAL MERIDIAN, BLACK HAWK COUNTY, IOWA. PREVIOUS RECORD FOUND AT THE BLACK HAWK COUNTY IN IDOT PLANS F-63-6(903)-20-07 ENGINEER'S OFFICE.

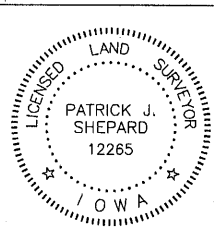
MONUMENT DESCRIPTION AND REMARKS:
SE CORNER, 24-90-13. FOUND 1" GAS PIPE THAT MATCHES PREVIOUS RECORD. NO PREVIOUS TIES FOUND. THIS CERTIFICATE IS BEING PREPARED TO REPLACE LOST TIES.

PLAN -VIEW



LIST CORNERS TO BE INDEXED.

CORNERS	SECTION	TWP.	RANGE
SE CORNER	24	90	13
SW CORNER	19	90	12
NW CORNER	30	90	12
NE CORNER	25	90	13



I HEREBY CERTIFY THAT THIS LAND SURVEYING DOCUMENT WAS PREPARED AND THE RELATED SURVEY WORK WAS PERFORMED BY ME OR UNDER MY DIRECT PERSONAL SUPERVISION AND THAT I AM A DULY LICENSED LAND SURVEYOR UNDER THE LAWS OF THE STATE OF IOWA.
P. Shepard 1-24-13
PATRICK J. SHEPARD, IOWA LICENSE NO. 12265 DATE
MY LICENSE RENEWAL DATE IS DECEMBER 31, 2013
PAGES OR SHEETS COVERED BY THIS SEAL:
THIS SHEET ONLY