

Reserved for County Recorder's use.



Doc ID: 011955880001 Type: GEN
Recorded: 06/09/2023 at 10:41:02 AM
Fee Amt: \$7.00 Page 1 of 1
Black Hawk County Iowa
SANDIE L. SMITH RECORDER

File **2023-00016512**

Jeffrey P. Helland, 6109 Chancellor Drive, Cedar Falls, Iowa 50613-6916, (319)-266-0161

UNITED STATES PUBLIC LAND SURVEY CORNER CERTIFICATE
OF

LAND SURVEY MONUMENTS SITUATED IN SECTION NO. 23, TOWNSHIP NO. 90 NORTH, RANGE
NO. 13 WEST OF THE FIFTH PRINCIPAL MERIDIAN, BLACK HAWK COUNTY, IOWA.
PREVIOUSLY RECORDED IN #2013-00007904

(SHOW REASON FOR PREPARING THIS CERTIFICATE, THE EVIDENCE AND DETAILED PROCEDURES USED IN ESTABLISHING THE
CORNER POSITIONS AND MONUMENTATION FOUND OR PLACED.)

MONUMENT DESCRIPTION AND REMARKS:

ONLY ONE REFERENCE TIE REMAINS. SURVEY COMPLETED IN THE NW 1/4 NW 1/4 OF SEC. 23-T90N-R13W.

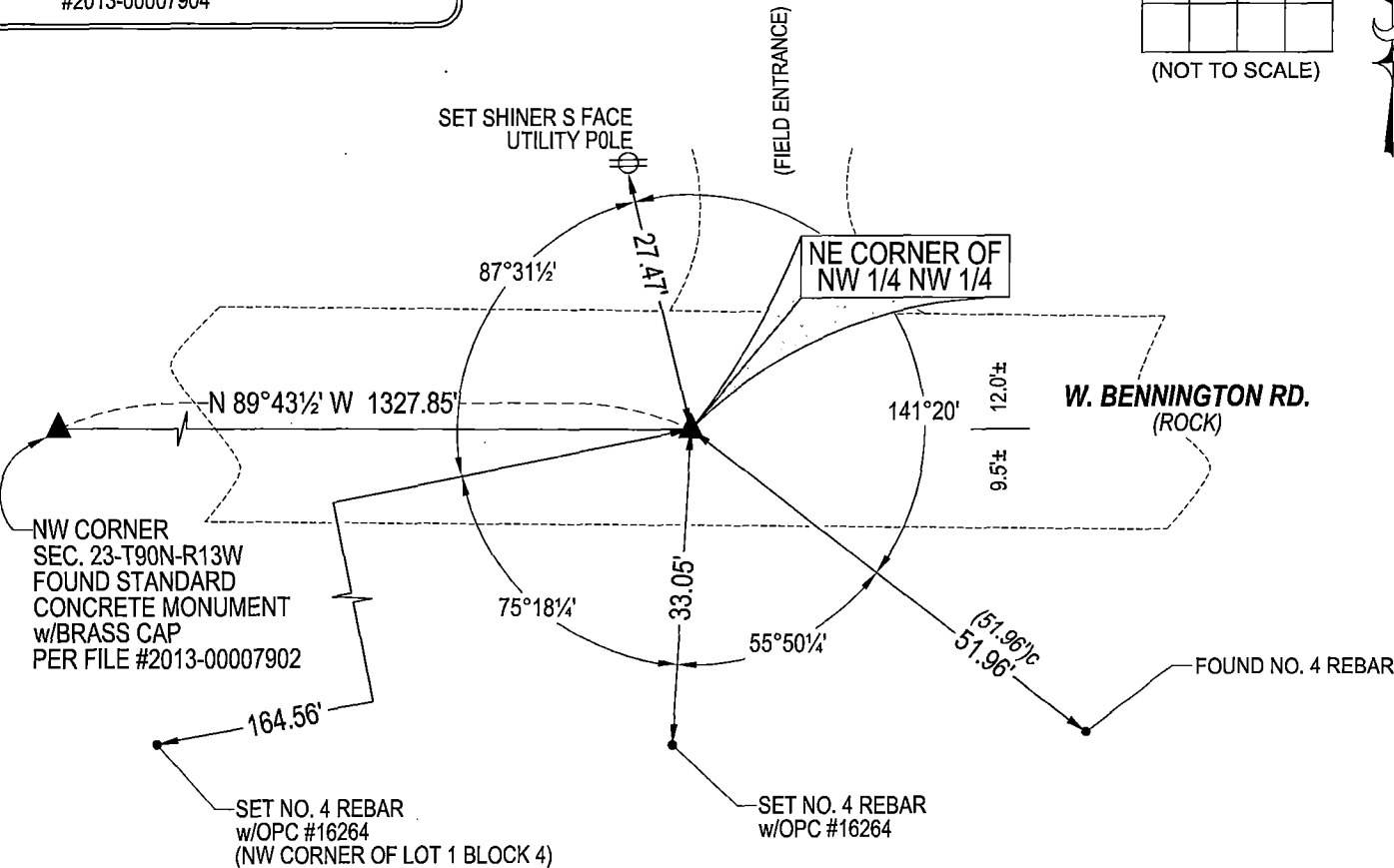
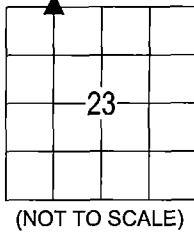
NE CORNER OF NW 1/4 NW 1/4: PLAT OF GLASCOW DATED 1902 CALLS FOR [STONE]. USPLSCC #2013-00007904 DATED
10/17/2012 CALLS FOR [DUG AT INTERSECTIONS OF FENCES RUNNING NORTH AND SOUTH, FOUND YELLOW GRANITE
STONE 1'Ø ± 1.5' ± DEEP. SET NO. 4 REBAR 1.2' LONG w/OPC #6505 ABOVE CENTER OF HIGH POINT OF SAID STONE.].
SEARCHED AREA WITH MAGNETIC DETECTOR, FOUND NO. 4 REBAR w/OPC #6505 0.2' ± DEEP. UTILIZED SAID FOUND NO.
4 REBAR w/OPC #6505 AS CORNER.

PLAN VIEW

(SHOW A MINIMUM OF THREE REFERENCE TIES TO DURABLE PHYSICAL OBJECTS, RELEVANT MONUMENTS AND PHYSICAL
CONDITIONS THAT WILL ENABLE RECOVERY OF THE CORNER.)

LEGEND

(0.0')b USPLSCC DATED 10/17/2012
#2013-00007904



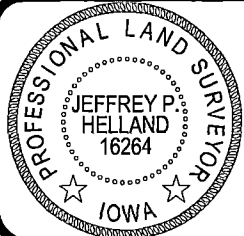
SEE ASSOCIATED PLAT OF SURVEY FOR
"RECORDED AS" INFORMATION

(BEARINGS ARE ASSUMED)



HELLAND ENGINEERING & SURVEYING, LTD.
6109 Chancellor Drive
Cedar Falls, Iowa 50613-6916
(319)-266-0161

SHINER = 4d. NAIL & 1 5/16"Ø METAL SHINER
BRASS TAG = 4d. NAIL & 13/16"Ø BRASS TAG
OPC = PLASTIC CAP (O=ORANGE, R=RED, Y=YELLOW)
(00') RECORDED AS FILE NAME: 23-138-61.DWG



I hereby certify that this land surveying document was prepared
and the related survey work was performed by me or under my
direct personal supervision and that I am a duly licensed
Professional Land Surveyor under the laws of the State of Iowa.
Jeffrey P. Helland 6/01/2023
Jeffrey P. Helland
License Number 16264
My license renewal date is December 31, 2023.
All pages or sheets are covered by this seal except:

LIST CORNERS TO BE INDEXED			
CORNER	SECTION	TOWNSHIP	RANGE
NE COR. NW 1/4 NW 1/4	23	90N	13W
SE COR. SW 1/4 SW 1/4	14	90N	13W
SW COR. SE 1/4 SW 1/4	14	90N	13W
NW COR. NE 1/4 NW 1/4	23	90N	13W