

WAYNE CLAASSEN ENGINEERING AND SURVEYING, INC.  
P.O. BOX 898 WATERLOO, IOWA 50704-0898

PHONE: (VOICE) 319-235-6294  
(FAX) 319-235-0028

## UNITED STATES PUBLIC LAND SURVEY CORNER CERTIFICATE

Land Survey Monuments situated in Section 23, Township 90 North, Range 13 West, of the Fifth Principal Meridian, Black Hawk County, Iowa.

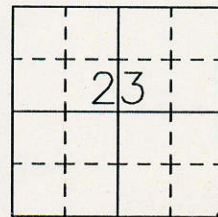
Previously recorded in Misc. Book 341-292 in County Recorder's Office.  
(book, page, document number, etc.)

### Monument Description and Remarks

Went to location of Section Corner and found standard concrete monument about 6" deep. nail from above certificate was missing.

#### Reason for filing certificate:

- ☐ There is no certificate on file with the Recorder's Office.  
☐ Accepts corner position which differs from the one shown in above document.  
☒ The corner monument was replaced or modified.  
☐ The reference ties in above document were incorrect or missing.



E 1/4 CORNER  
SEC. 23-T90N-R13W  
(FOUND 2" ALUM. CAP)  
DOC. NO. 2007-06815

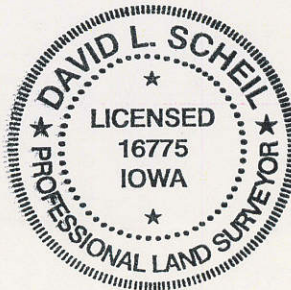
HIGHWAY No. 63

LOGAN AVE.

SE CORNER  
SEC. 23-T90N-R13W  
(FOUND S.C.M.)  
MISC. BOOK 341-292

MOUNT VERNON RD.

TAG ON  
WOOD POWER POLE  
R/W RAIL  
GAS TEST  
LEAD BOX



IOWA STATE PLANE  
COORDINATE SYSTEM  
NORTH ZONE  
N 3678396.1  
E 5234280.7  
(FOR REFERENCE ONLY)

700-79

I hereby certify that this land surveying document was prepared and the related survey work was performed by me or under my direct personal supervision and that I am a duly Licensed Land Surveyor under the laws of the State of Iowa.

Signature: David L. Scheil  
David L. Scheil, L.S.

Date: JUNE 21, 2018 Lic. No. 16775

Pages or Sheets Covered by this Seal: THIS SHEET ONLY.

My license renewal date is December 31, 2018

SEAL

#### List Corners to be Indexed

| Corners    | Section | Twp  | Range |
|------------|---------|------|-------|
| SE CORNER, | 23      | 90 N | 13 W  |
| SW CORNER, | 24      | 90 N | 13 W  |
| NE CORNER, | 26      | 90 N | 13 W  |
| NW CORNER, | 25      | 90 N | 13 W  |