

Paul H. Helland, 1107 Technology Parkway, Cedar Falls, Iowa 50613-6951, (319)-266-0161

UNITED STATES PUBLIC LAND SURVEY CORNER CERTIFICATE OF

LAND SURVEY MONUMENTS SITUATED IN SECTION NO. 23, TOWNSHIP NO. 90 NORTH, RANGE
NO. 13 WEST OF THE FIFTH PRINCIPAL MERIDIAN, BLACK HAWK COUNTY, IOWA.
PREVIOUSLY RECORDED IN N/A.

(SHOW REASON FOR PREPARING THIS CERTIFICATE, THE EVIDENCE AND DETAILED PROCEDURES USED IN ESTABLISHING THE
CORNER POSITIONS AND MONUMENTATION FOUND OR PLACED.)

MONUMENT DESCRIPTION AND REMARKS:

NO USPLSCC ON FILE. SURVEY COMPLETED IN THE NW 1/4 OF SEC. 23-T90N-R13W.

→ **NE CORNER OF SW 1/4 NW 1/4:** PER PLAT OF GLASCOW SURVEY DATED 1902 CALLS FOR [STONE]. PER RAILROAD
STRIP MAP (NO DATE) CALLS FOR [STONE]. SEARCHED AREA FOUND MULTIPLE FIELD STONES ON SURFACE BUT NOTHING
SUBSURFACE FOUND. THEREFORE, SET NO.4 REBAR w/OPC #6505 AT SOUTH EDGE OF CORNER POST IN LINE WITH
FENCES RUNNING NORTH AND EAST.

PLAN VIEW

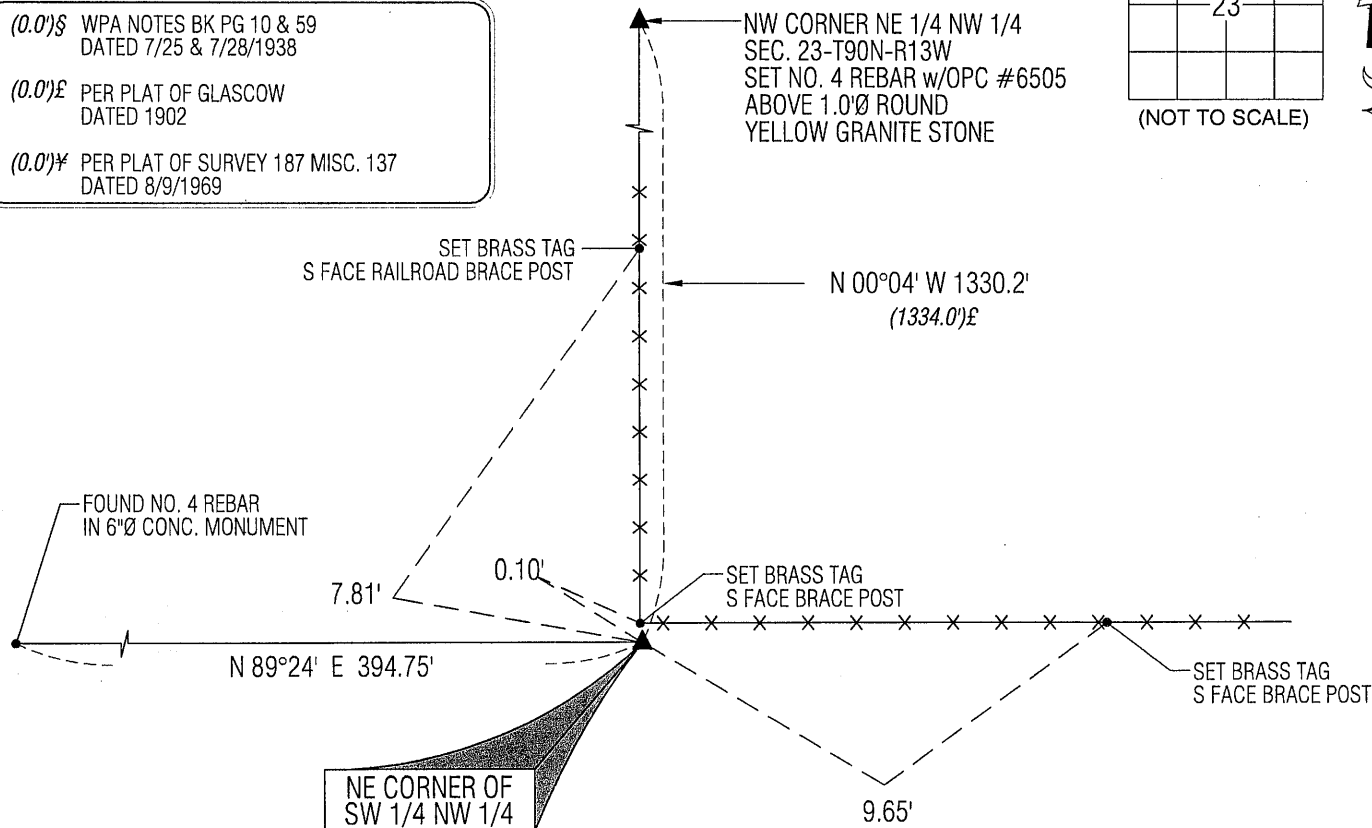
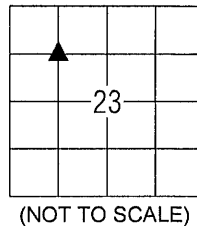
(SHOW A MINIMUM OF THREE REFERENCE TIES TO DURABLE PHYSICAL OBJECTS, RELEVANT MONUMENTS AND PHYSICAL
CONDITIONS THAT WILL ENABLE RECOVERY OF THE CORNER.)

LEGEND

(0.0)\$ WPA NOTES BK PG 10 & 59
DATED 7/25 & 7/28/1938

(0.0)£ PER PLAT OF GLASCOW
DATED 1902

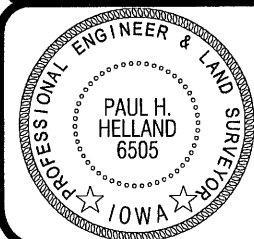
(0.0)¥ PER PLAT OF SURVEY 187 MISC. 137
DATED 8/9/1969



(BEARINGS ARE ASSUMED)

HELLAND ENGINEERING & SURVEYING, LTD.
1107 Technology Parkway
Cedar Falls, Iowa 50613-6951
(319)-266-0161

SHINER = 8D NAIL & 1 5/16"Ø METAL SHINER
BRASS TAG = 8D NAIL & 13/16"Ø BRASS TAG
OPC = PLASTIC CAP (O=ORANGE, R=RED, Y=YELLOW)
(00) RECORDED AS FILE NAME: 12-217-65.DWG



I hereby certify that this land surveying document was prepared
and the related survey work was performed by me or under my
direct personal supervision and that I am a duly licensed Land
Surveyor under the laws of the State of Iowa.

Paul H. Helland 10/17/12
Paul H. Helland
License Number 6505
My license renewal date is December 31, 2013.
All pages or sheets are covered by this seal except:

LIST CORNERS TO BE INDEXED			
CORNER	SECTION	TOWNSHIP	RANGE
NE COR. SW 1/4 NW 1/4	23	90N	13W
SE COR. NW 1/4 NW 1/4	23	90N	13W
SW COR. NE 1/4 NW 1/4	23	90N	13W
NW COR. SE 1/4 NW 1/4	23	90N	13W