

I  
P  
Z

Document Number: 2007006815  
Date: Sep 20, 2006 4:30:00 pm  
Aud Fee: 0.00 Rec Fee: 5.00  
Trans Tax: 0.00 Rec Management Fee 1.00  
E-Com Fee: 1.00 Non-Standard Page Fee: 0.00  
Filed for record in Black Hawk County, Iowa  
Patricia S. Sass, County Recorder

Jeffrey P. Helland, 1107 Technology Parkway, Cedar Falls, Iowa 50613-6951, (319)-266-0161

UNITED STATES PUBLIC LAND SURVEY CORNER CERTIFICATE  
OF

LAND SURVEY MONUMENTS SITUATED IN SECTION NO. 23, TOWNSHIP NO. 90 NORTH, RANGE  
NO. 13 WEST OF THE FIFTH PRINCIPAL MERIDIAN, BLACK HAWK COUNTY, IOWA.  
PREVIOUSLY RECORDED IN

(SHOW REASON FOR PREPARING THIS CERTIFICATE, THE EVIDENCE AND DETAILED PROCEDURES USED IN ESTABLISHING THE  
CORNER POSITIONS AND MONUMENTATION FOUND OR PLACED.)

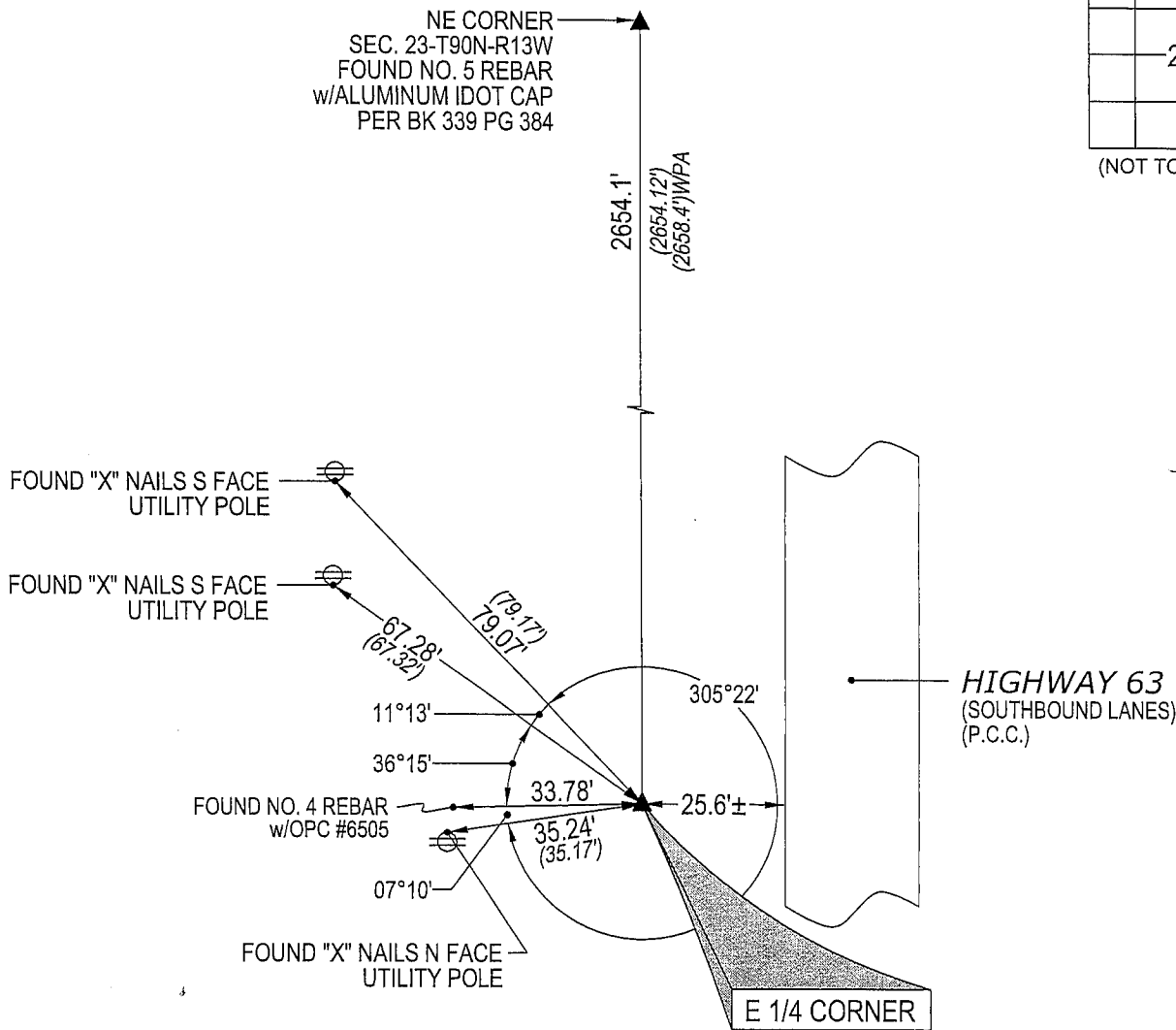
MONUMENT DESCRIPTION AND REMARKS:

NO USPLSCC ON FILE. SURVEY COMPLETED IN THE NE 1/4 OF SEC. 23-T90N-R13W.

→ E 1/4 CORNER: NO BLACK HAWK COUNTY ENGINEER REFERENCE TIES AVAILABLE. CORNER STONE SURVEY  
(PROJECT #F-63-6(903)--20-07) MADE FOR THE IOWA DOT HIGHWAY DIVISION DATED FEB. 23, 1981 CALLS FOR  
[SET NAIL]. [SET NAIL] HAS BEEN OBLITERATED DUE TO THE RECONSTRUCTION OF HWY. 63 FROM A TWO  
LANE HIGHWAY INTO A FOUR LANE DIVIDED HIGHWAY. FOUND NO. 5 REBAR w/ALUMINUM IDOT CAP, 1.4'  
DEEP. SAID FOUND REBAR CORRESPONDS TO CORNER STONE SURVEY TIES, ACCEPTED AS CORNER.

PLAN VIEW

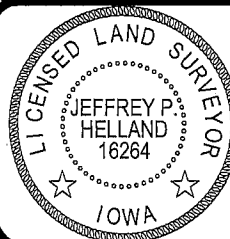
(SHOW A MINIMUM OF THREE REFERENCE TIES TO DURABLE PHYSICAL OBJECTS, RELEVANT MONUMENTS AND PHYSICAL  
CONDITIONS THAT WILL ENABLE RECOVERY OF THE CORNER.)



HELLAND ENGINEERING & SURVEYING, LTD.  
1107 Technology Parkway  
Cedar Falls, Iowa 50613-6951  
(319)-266-0161

SHINER = 8D NAIL & 1 15/16"Ø METAL SHINER  
OPC = PLASTIC CAP (O=ORANGE, R=RED, Y=YELLOW)

(00') RECORDED AS FILE NAME: 06-252C1.DWG



I hereby certify that this land surveying document was prepared  
and the related survey work was performed by me or under my  
direct personal supervision and that I am a duly licensed Land  
Surveyor under the laws of the State of Iowa.

Jeffrey P. Helland 8/29/06  
Jeffrey P. Helland  
License Number 16264  
My license renewal date is December 31, 2007.  
All pages or sheets are covered by this seal except:

LIST CORNERS TO BE INDEXED

CORNER	SECTION	TOWNSHIP	RANGE
E 1/4 CORNER	23	90N	13W

Rec