

Reserved for County Recorder's use

2024-20132

RECORDED: 09/10/2024 03:33:58 PM

RECORDING FEE: \$7.00

REVENUE TAX: \$

COMBINED FEE: \$7.00

SANDIE L. SMITH, RECORDER

BLACK HAWK COUNTY, IOWA

Kyle J. Helland, 6109 Chancellor Drive, Cedar Falls, Iowa 50613-6916, (319)-266-0161

UNITED STATES PUBLIC LAND SURVEY CORNER CERTIFICATE OF

LAND SURVEY MONUMENTS SITUATED IN SECTION NO 22, TOWNSHIP NO 90 NORTH, RANGE
NO 13 WEST OF THE FIFTH PRINCIPAL MERIDIAN, BLACK HAWK COUNTY, IOWA
PREVIOUSLY RECORDED IN N/A

(SHOW REASON FOR PREPARING THIS CERTIFICATE, THE EVIDENCE AND DETAILED PROCEDURES USED IN ESTABLISHING THE
CORNER POSITIONS AND MONUMENTATION FOUND OR PLACED)

MONUMENT DESCRIPTION AND REMARKS

NO USPLSCC ON FILE SURVEY COMPLETED IN THE SW 1/4 OF SEC 23-T90N-R13W

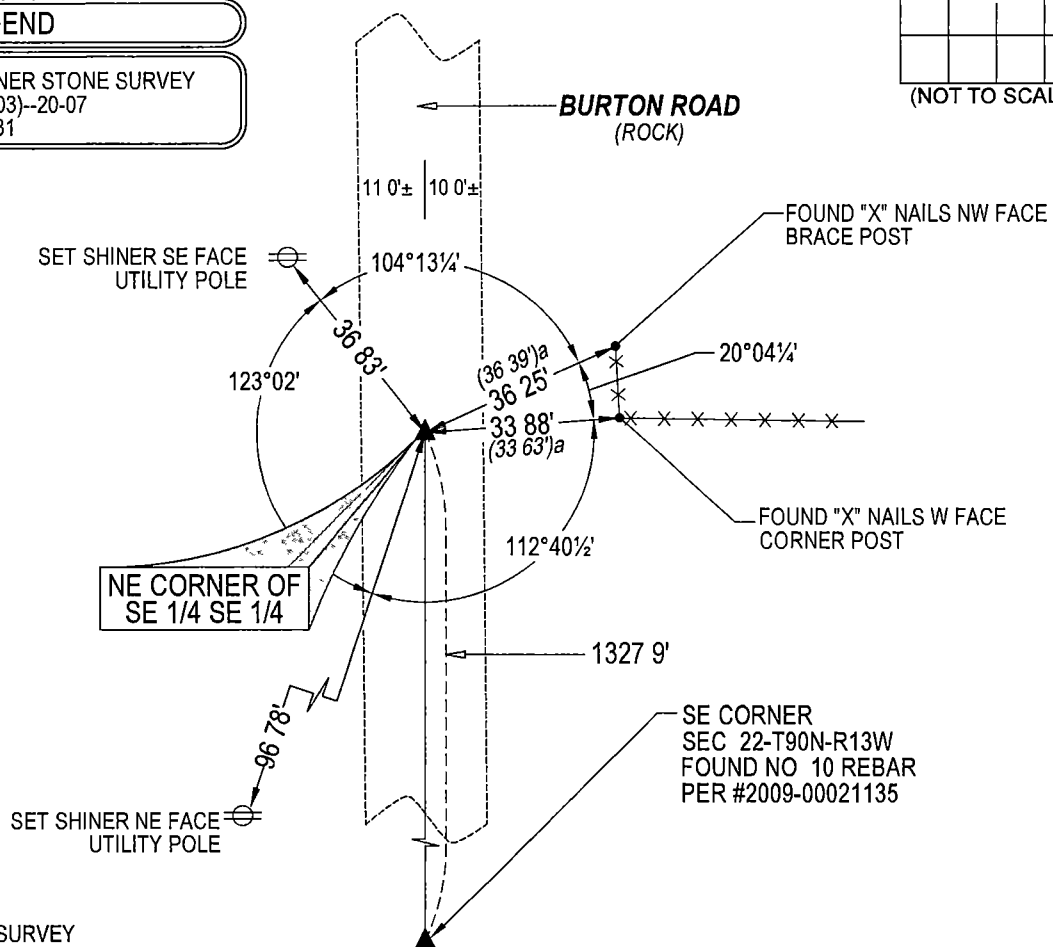
→ **NE CORNER OF THE SE 1/4 SE 1/4:** NO BLACK HAWK COUNTY ENGINEER TIES ARE AVAILABLE IOWA DOT CORNER
STONE SURVEY PROJECT # F-63-6(903)--20-07 DATED 02/23/1981 CALLS FOR [FOUND PINCHED PIPE 4" DEEP] SEARCHED
AREA WITH MAGNETIC DETECTOR AND FOUND 1"Ø STEEL PINCHED PIPE 0'2"± DEEP, THEREFORE UTILIZED SAID 1"Ø
STEEL PINCHED PIPE AS THE CORNER

PLAN VIEW

(SHOW A MINIMUM OF THREE REFERENCE TIES TO DURABLE PHYSICAL OBJECTS, RELEVANT MONUMENTS AND PHYSICAL
CONDITIONS THAT WILL ENABLE RECOVERY OF THE CORNER)

LEGEND

(0'0") IOWA DOT CORNER STONE SURVEY
PROJ # F-63-6(903)--20-07
DATED 02/23/1981



SEE ASSOCIATED PLAT OF SURVEY
FOR "RECORDED AS" INFORMATION

(BEARINGS ARE ASSUMED)



HELLAND ENGINEERING & SURVEYING, LTD
6109 Chancellor Drive
Cedar Falls, Iowa 50613-6916
(319)-266-0161

BRASS TAG = 4d NAIL & 13/16"Ø BRASS TAG DRAWN BY CDR
SHINER = 1"Ø STEEL SHINER w/MASONRY NAIL
OPC = PLASTIC CAP (O=ORANGE, R=RED, Y=YELLOW)
(00') RECORDED AS FILE NAME 24-213-54 DWG



I hereby certify that this land surveying document was prepared
and the related survey work was performed by me or under my
direct personal supervision and that I am a duly licensed
Professional Land Surveyor under the laws of the State of Iowa.
Kyle J. Helland 09/10/2024
Kyle J. Helland
License Number 23212
My license renewal date is December 31, 2025
All pages or sheets are covered by this seal except

LIST CORNERS TO BE INDEXED

CORNER	SECTION / TOWNSHIP / RANGE		
NE COR SE 1/4 SE 1/4	22	90N	13W
SE COR NE 1/4 SE 1/4	22	90N	13W
SW COR NW 1/4 SW 1/4	23	90N	13W
NW COR SW 1/4 SW 1/4	23	90N	13W