

Paul H. Helland, 1107 Technology Parkway, Cedar Falls, Iowa 50613-6951, (319)-266-0161

UNITED STATES PUBLIC LAND SURVEY CORNER CERTIFICATE OF

LAND SURVEY MONUMENTS SITUATED IN SECTION NO. 22, TOWNSHIP NO. 90 NORTH, RANGE
NO. 13 WEST OF THE FIFTH PRINCIPAL MERIDIAN, BLACK HAWK COUNTY, IOWA.
PREVIOUSLY RECORDED IN N/A

(SHOW REASON FOR PREPARING THIS CERTIFICATE, THE EVIDENCE AND DETAILED PROCEDURES USED IN ESTABLISHING THE
CORNER POSITIONS AND MONUMENTATION FOUND OR PLACED.)

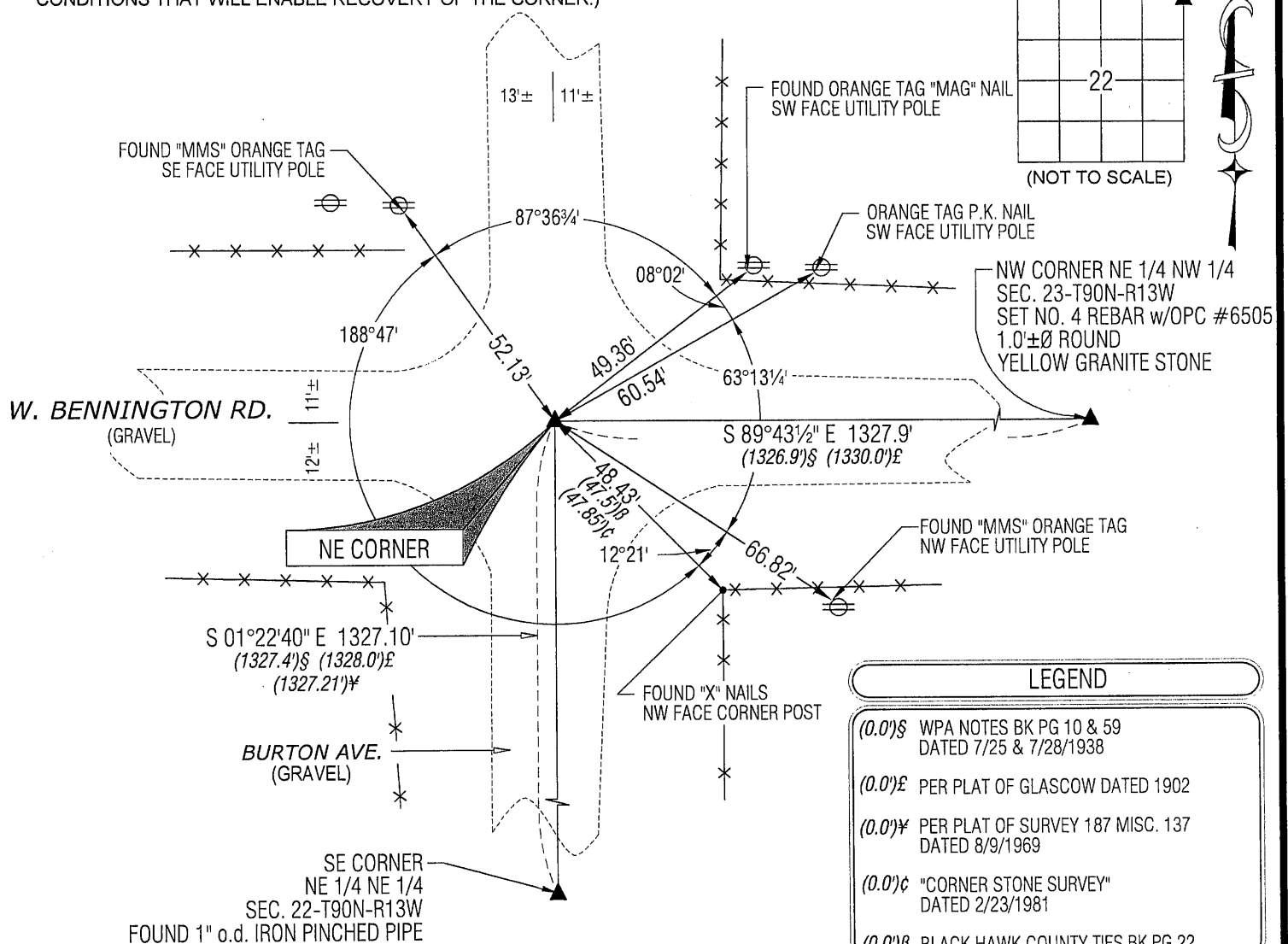
MONUMENT DESCRIPTION AND REMARKS:

NO USPLSCC ON FILE. SURVEY COMPLETED IN THE NW 1/4 OF SEC. 23-T90N-R13W.

→ **NE CORNER:** WPA NOTES (NO DATE) CALLS FOR [FOUND 2x2x17 OAK HUB AND 8 1/2x9 1/2x6 LIMESTONE PLUMBED STONE
AND SET CEM. MON. ON TOP OF IT. SET OAK HUB SOUTH OF MON.]. BLACK HAWK COUNTY ENGINEER TIES 5/29/39 CALLS
FOR [CONCRETE MONUMENT]. BLACKHAWK COUNTY ENGINEER TIES BK PG 22 (UNDATED) CALLS FOR [CONCRETE
MONUMENT]. "CORNER STONE SURVEY" DATED 2/23/1981 CALLS FOR [FOUND IRON PIN]. FOUND STANDARD CONCRETE
MONUMENT 0.7'± DEEP PER SAID TIES, FOUND BENT NO. 4 REBAR 0.40' NORTH FOR MAGNETIC DETECTION.

PLAN VIEW

(SHOW A MINIMUM OF THREE REFERENCE TIES TO DURABLE PHYSICAL OBJECTS, RELEVANT MONUMENTS AND PHYSICAL
CONDITIONS THAT WILL ENABLE RECOVERY OF THE CORNER.)

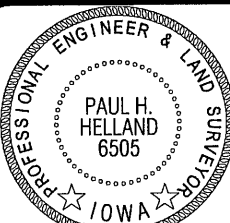


(BEARINGS ARE ASSUMED)



HELLAND ENGINEERING & SURVEYING, LTD.
1107 Technology Parkway
Cedar Falls, Iowa 50613-6951
(319)-266-0161

SHINER = 8D NAIL & 1 5/16"Ø METAL SHINER
BRASS TAG = 8D NAIL & 13/16"Ø BRASS TAG
OPC = PLASTIC CAP (O=ORANGE, R=RED, Y=YELLOW)
(00) RECORDED AS FILE NAME: 12-217-27.DWG



I hereby certify that this land surveying document was prepared
and the related survey work was performed by me or under my
direct personal supervision and that I am a duly licensed Land
Surveyor under the laws of the State of Iowa.

Paul H. Helland
Paul H. Helland
License Number 6505
My license renewal date is December 31, 2013.
All pages or sheets are covered by this seal except:

LIST CORNERS TO BE INDEXED

CORNER	SECTION	TOWNSHIP	RANGE
NE CORNER	22	90N	13W
SE CORNER	15	90N	13W
SW CORNER	14	90N	13W
NW CORNER	23	90N	13W