

SC
MISC
INDEX

Recorded Oct 8, 1997
4:00 P.M. and recorded in Book 327
Misc Page 606
Recorder
1-5.00x
PAUL HELLAND

County Assessment

PAUL H. HELLAND, 1107 TECHNOLOGY PARKWAY, CEDAR FALLS, IOWA 50613, (319)-266-0161

UNITED STATES PUBLIC LAND SURVEY CORNER CERTIFICATE OF

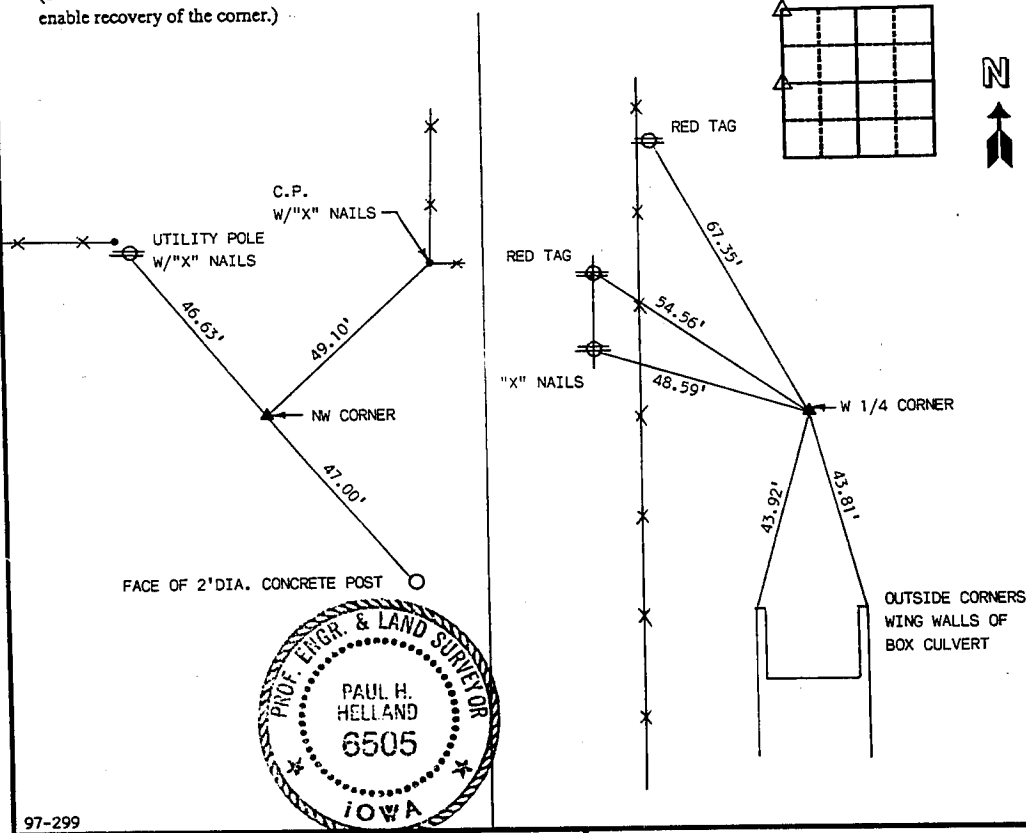
Land Survey Monuments situated in Section 21, Township 90, Range 13, of the Fifth Principal Meridian, BLACK HAWK County, Iowa.
Previously recorded in Book , Page .

(Show reason for preparing this certificate, the evidence and detailed procedures used in establishing the corner positions and monumentation found or placed.)

Monument Description and Remarks: SURVEY DONE IN NW 1/4 SEC. 21-90-13.
NW CORNER - FOUND NO. 4 REBAR, 0.2' DEEP AS PER COUNTY TIES DATED 1958.
W 1/4 CORNER - FOUND CONCRETE MONUMENT W/BRASS CAP MARKED "20x21" FLUSH W GRAVEL SURFACE.

PLAN - VIEW

(Show a minimum of three reference ties to durable physical objects, relevant monuments and physical conditions that will enable recovery of the corner.)



97-299

I HEREBY CERTIFY THAT THIS PLAT, MAP, SURVEY OR REPORT WAS MADE BY ME OR UNDER MY DIRECT PERSONAL SUPERVISION AND THAT I AM A DULY REGISTERED LAND SURVEYOR UNDER THE LAWS OF THE STATE OF IOWA.
PAUL H. HELLAND, P.E. & R.L.S., IOWA REGISTRATION NO. 6505
MY REGISTRATION EXPIRES DECEMBER 31, 1997

HELLAND ENGINEERING & SURVEYING, LTD.
1107 TECHNOLOGY PARKWAY
CEDAR FALLS, IOWA 50613
319-266-0161

List Corners to be Indexed

Corners	Section	Twp	Range
NW	21	90	13
W 1/4	21	90	13