

Misc ✓ SC
INDEX of
MARGIN
PROOF
COMPARE

BLACK HAWK COUNTY IOWA: SS
Filed for record Sep 28, 1998, at
4:00 P.M. and recorded in Book 331
of Misc Page 703.
Catherine S. Soss Recorder
Fee n/c
ENGINEER'S OFFICE

7241

County Recorder

PREPARED BY: BLACK HAWK COUNTY ENGINEERS OFFICE
316 E. FIFTH STREET, ROOM 211 WATERLOO, IOWA 50703

PH.# (319) 291-2419
FAX.# (319) 291-2461

SLSI 9-94
CERT 12-98

UNITED STATES PUBLIC LAND SURVEY CORNER CERTIFICATE OF

Land Survey Monuments situated in Section 21, Township 90 N,
Range 13 W, of the Fifth Principal Meridian, BLACK HAWK County, Iowa.
Previously recorded in Misc. Book N/A, Page N/A, in County Recorder's Office.

(Show reason for preparing this certificate, the evidence and detailed procedures used in establishing the corner positions and monumentation found or placed.)

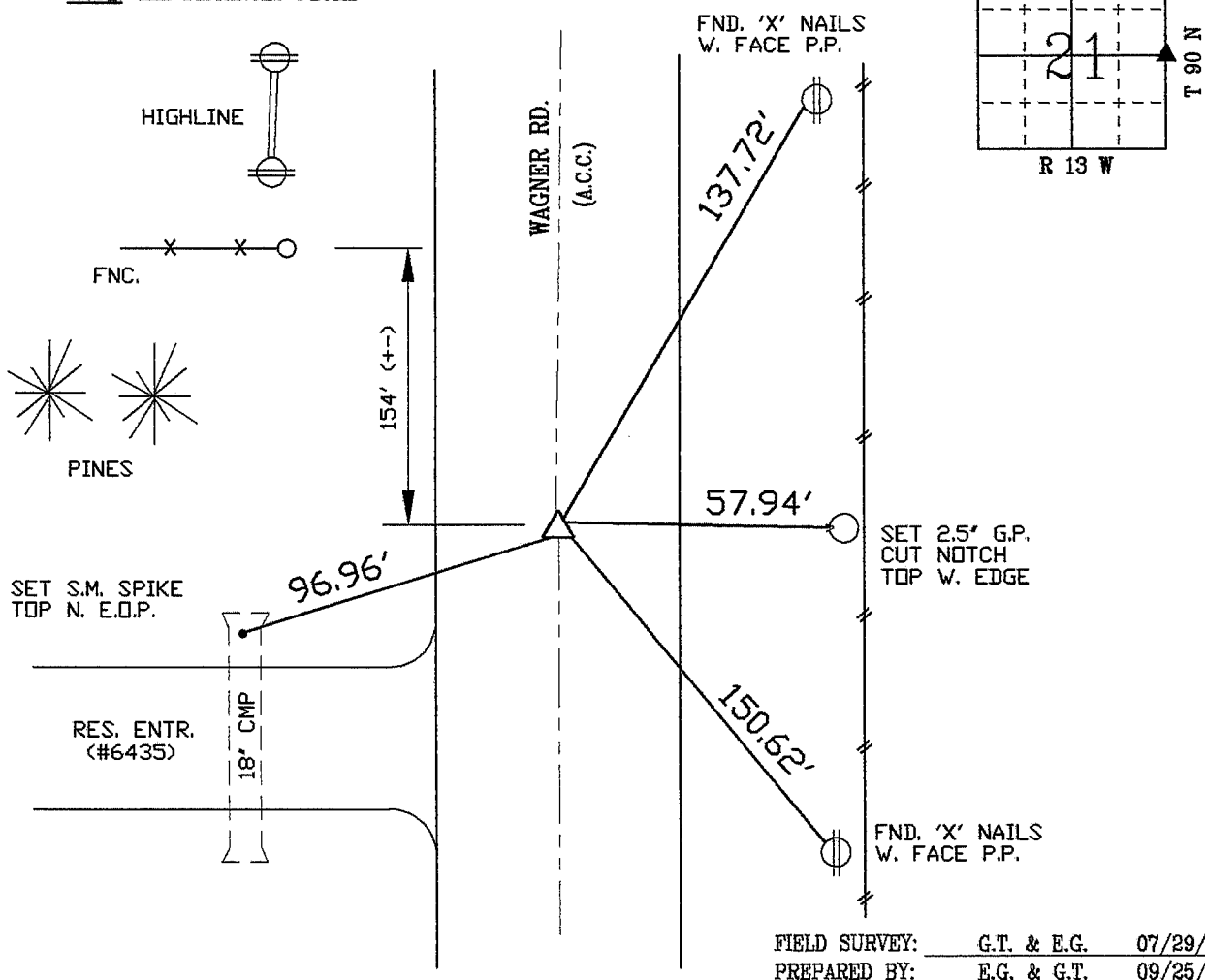
Monument Description and Remarks: FOUND LEAD PLUG 0.23' E. OF
CENTERLINE ON WAGNER RD. REPLACE WITH 5/8" REBAR x 6' L. @ A.C.C.
SURFACE. RETIED DUE TO A.C.C. RESURFACING PROJECT

PLAN - VIEW

(Show a minimum of three reference ties to durable physical objects, relevant monuments and physical conditions that will enable recovery of the corner.)

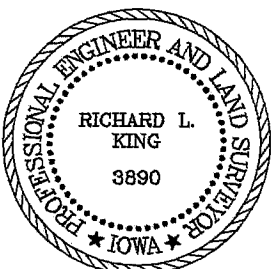
NOTE: ALL DISTANCES PLUMB

NOT TO SCALE



FIELD SURVEY: G.T. & E.G. 07/29/98
PREPARED BY: E.G. & G.T. 09/25/98

CERTIFICATION



I hereby certify that this land surveying document was prepared and the related survey work was performed by me or under my direct personal supervision and that I am a duly licensed Land Surveyor under the laws of the State of Iowa.

Richard L. King 9/25/98
Richard L. King (date)

License Number 3890

My license renewal date is December 31, 1999

Pages or sheets covered by this seal:

This Land Corner Certificate Only.

LIST CORNERS TO BE INDEXED

Corner	Section	Township	Range
E 1/4	21	90 N	13 W

BOOK **331** PAGE **703**