

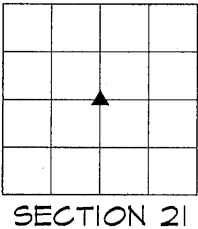
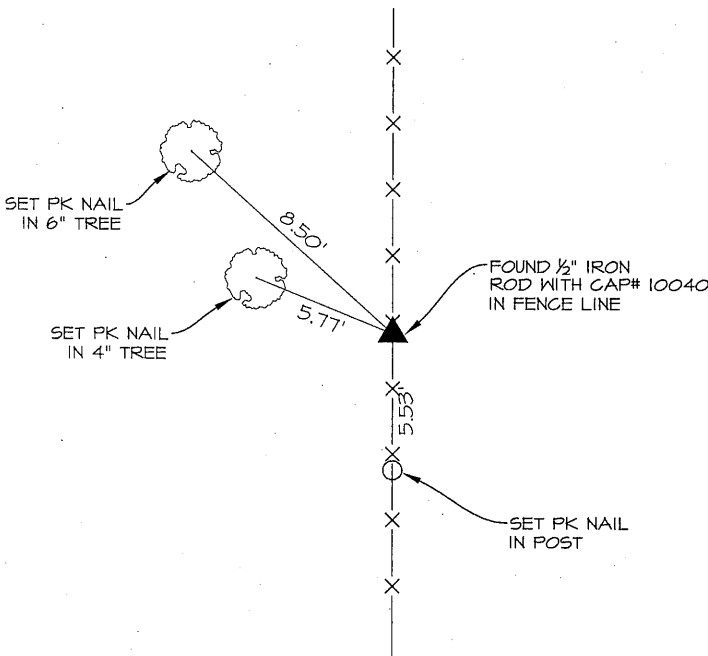
PREPARED BY PATRICK SHEPARD: CIVIL ENGINEERING CONSULTANTS, INC. - 2400 86th ST. #12 -DES MOINES, IOWA 50322

UNITED STATES PUBLIC LAND SURVEY CORNER CERTIFICATE
OF

LAND SURVEY MONUMENTS SITUATED IN SECTION 21, TOWNSHIP 90 NORTH, RANGE 13 WEST, OF THE FIFTH PRINCIPAL MERIDIAN, BLACK HAWK COUNTY, IOWA. NO PREVIOUS RECORD FOUND AT THE BLACKHAWK COUNTY RECORDER'S OFFICE.

MONUMENT DESCRIPTION AND REMARKS:
CENTER, 21-90-13, FOUND 1/2" IRON ROD WITH CAP# 10040 IN FENCE LINE. THIS CERTIFICATE IS BEING PREPARED TO DOCUMENT MONUMENTATION FOUND AND ACCEPTED AS THE CENTER OF SECTION AND TO PROVIDE TIES.

PLAN -VIEW



LIST CORNERS TO BE INDEXED			
CORNERS	SECTION	TWP.	RANGE
CENTER	21	90	13

	<p>I HEREBY CERTIFY THAT THIS LAND SURVEYING DOCUMENT WAS PREPARED AND THE RELATED SURVEY WORK WAS PERFORMED BY ME OR UNDER MY DIRECT PERSONAL SUPERVISION AND THAT I AM A DULY LICENSED LAND SURVEYOR UNDER THE LAWS OF THE STATE OF IOWA.</p> <p><i>PShep</i> 1-29-13</p> <p>PATRICK J. SHEPARD, IOWA LICENSE NO. 12265 DATE MY LICENSE RENEWAL DATE IS DECEMBER 31, 2013</p> <p>PAGES OR SHEETS COVERED BY THIS SEAL:</p> <p>THIS SHEET ONLY</p>
--	---