



Doc ID: 008314740001 Type: GEN
Recorded: 01/12/2018 at 09:43:59 AM
Fee Amt: \$7.00 Page 1 of 1
Black Hawk County Iowa
SANDIE L. SMITH RECORDER

File 2018-00011784

Reserved for County Recorder's use.

Kyle J. Helland, 1107 Technology Parkway, Cedar Falls, Iowa 50613-6951, (319)-266-0161

UNITED STATES PUBLIC LAND SURVEY CORNER CERTIFICATE OF

LAND SURVEY MONUMENTS SITUATED IN SECTION NO. 20, TOWNSHIP NO. 90 NORTH, RANGE
NO. 13 WEST OF THE FIFTH PRINCIPAL MERIDIAN, BLACK HAWK COUNTY, IOWA.
PREVIOUSLY RECORDED IN N/A

(SHOW REASON FOR PREPARING THIS CERTIFICATE, THE EVIDENCE AND DETAILED PROCEDURES USED IN ESTABLISHING THE
CORNER POSITIONS AND MONUMENTATION FOUND OR PLACED.)

MONUMENT DESCRIPTION AND REMARKS:

NO USPLSCC ON FILE. SURVEY COMPLETED IN THE E 1/2 NW 1/4 & W 1/2 NE 1/4 OF SEC. 20-T90N-R13W.

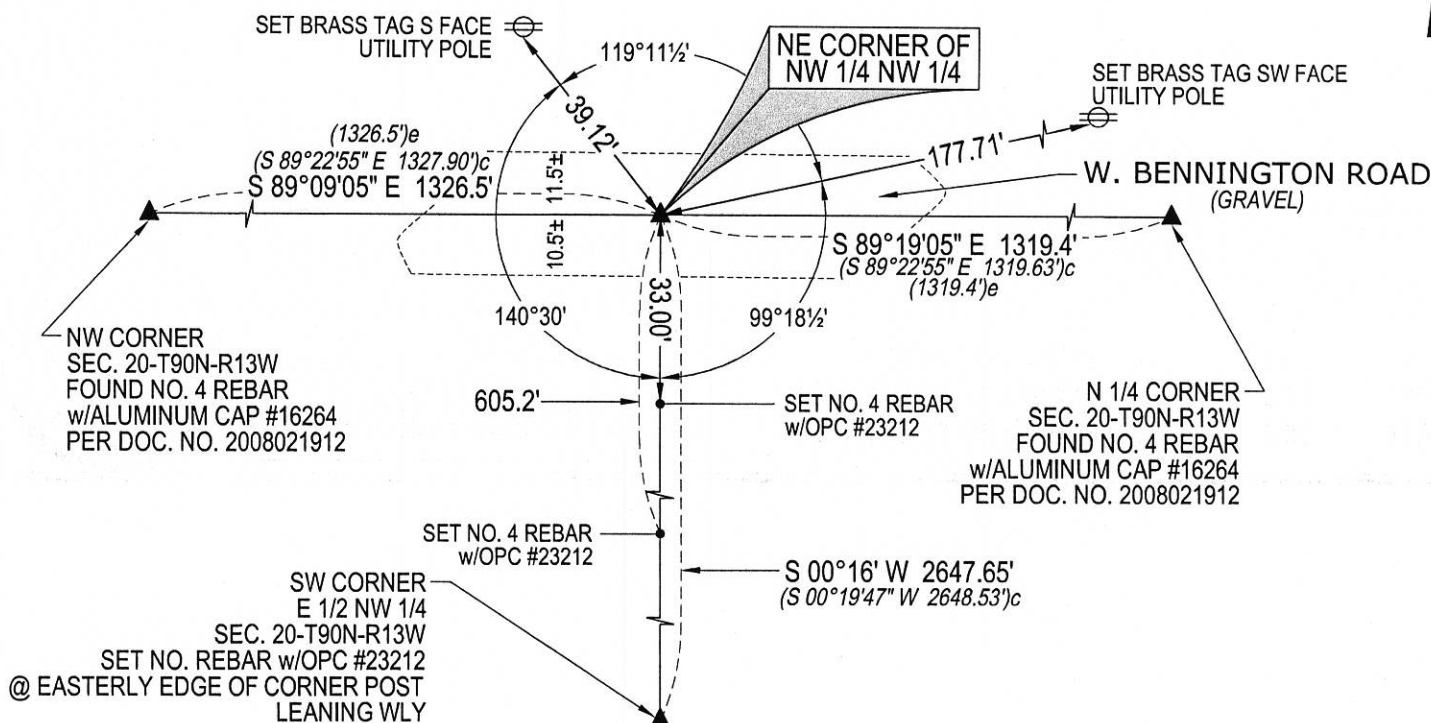
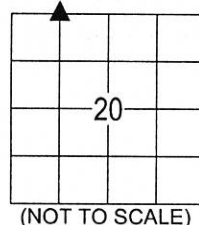
→ **NE CORNER NE 1/4 NW 1/4:** NO BLACK HAWK COUNTY ENGINEER REFERENCE TIES AVAILABLE. SEARCHED
AREA FOUND NO. 4 REBAR w/OPC #16264 PER PLAT OF SURVEY FILE 2011-21986 DATED 04/15/2008, SAID
FOUND REBAR FALLS WITHIN REASON OF THE 1/4 1/4 LINE PER PLAT OF SURVEY RECORDED IN 252 MISC. 909
DATED 10/03/1983. THEREFORE TO AVOID A "PIN CUSHION EFFECT" WITH MULTIPLE CORNERS LESS THAN A
FOOT APART, UTILIZED SAID NO. 4 REBAR w/OPC #16264 AS SAID CORNER.

PLAN VIEW

(SHOW A MINIMUM OF THREE REFERENCE TIES TO DURABLE PHYSICAL OBJECTS, RELEVANT MONUMENTS AND PHYSICAL
CONDITIONS THAT WILL ENABLE RECOVERY OF THE CORNER.)

LEGEND

- (0.0')a PER PLAT OF SURVEY 252 MISC. 909
DATED 10/03/1983
- (0.0')b PER PLAT OF SURVEY FILE 2011-21986
DATED 04/15/2008



(BEARINGS ARE ASSUMED)



HELLAND ENGINEERING & SURVEYING, LTD.
1107 Technology Parkway
Cedar Falls, Iowa 50613-6951
(319)-266-0161

SHINER = 8d. NAIL & 1 5/16"Ø METAL SHINER DRAWN BY: CDR
BRASS TAG = 8d. NAIL & 13/16"Ø BRASS TAG
OPC = PLASTIC CAP (O=ORANGE, R=RED, Y=YELLOW)
(00') RECORDED AS FILE NAME: 17-239-61.DWG



I hereby certify that this land surveying document was prepared
and the related survey work was performed by me or under my
direct personal supervision and that I am a duly licensed
Professional Land Surveyor under the laws of the State of Iowa.

Kyle J. Helland 12/30/17
Kyle J. Helland
License Number 23212
My license renewal date is December 31, 2017.
All pages or sheets are covered by this seal except:

LIST CORNERS TO BE INDEXED

CORNER	SECTION	TOWNSHIP	RANGE
NE COR. NW 1/4 NW 1/4	20	90N	13W
SE COR. SW 1/4 SW 1/4	17	90N	13W
SW COR. SE 1/4 SW 1/4	17	90N	13W
NW COR. NE 1/4 NW 1/4	20	90N	13W