

Recorded

UNITED STATES PUBLIC LAND SURVEY CORNER CERTIFICATE  
OF

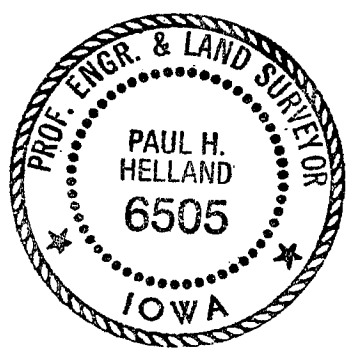
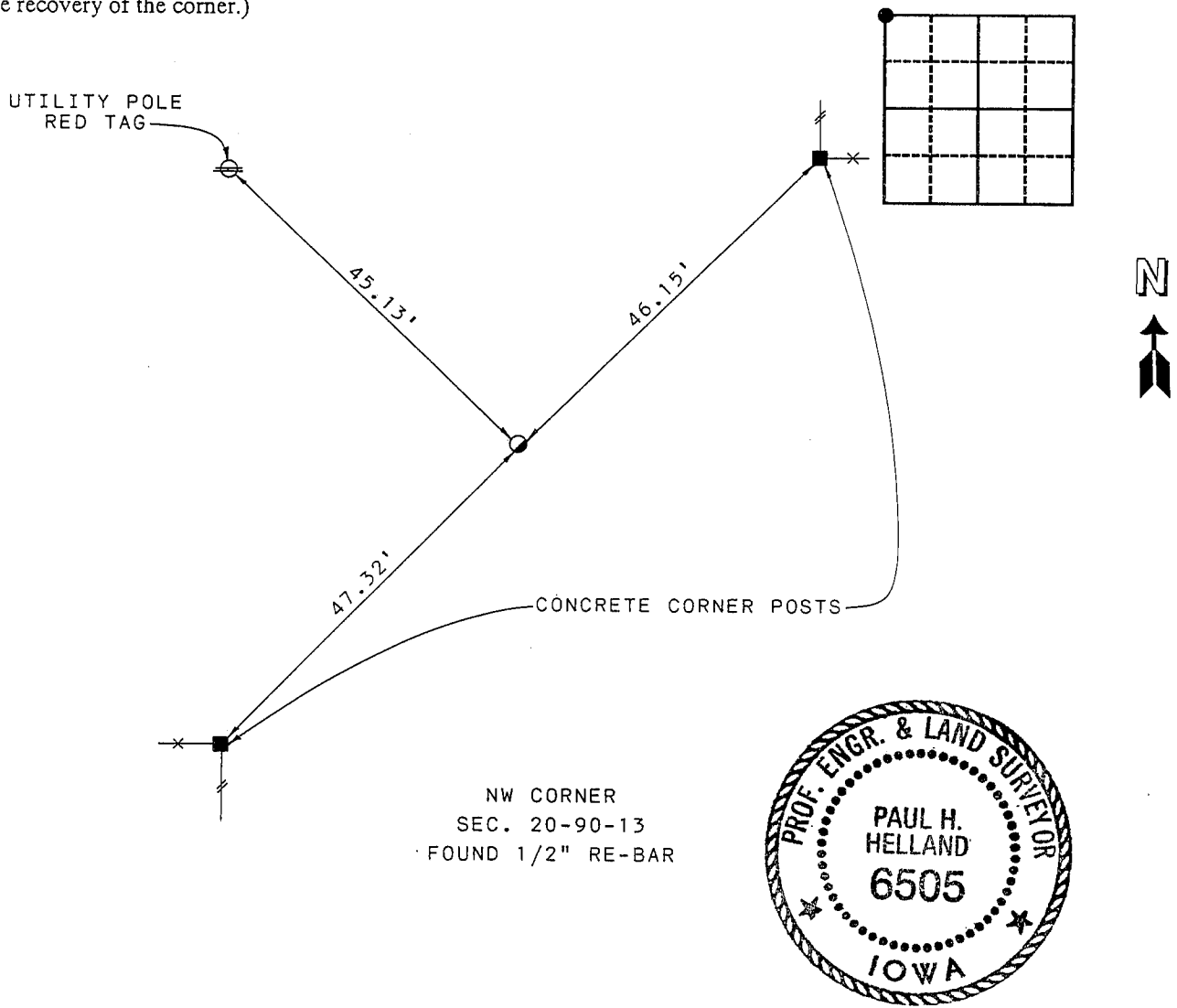
Land Survey Monuments situated in Section 20, Township 90, Range 13, of the Fifth Principal Meridian, BLACK HAWK County, Iowa.  
Previously recorded in Book \_\_\_\_\_, Page \_\_\_\_\_.

(Show reason for preparing this certificate, the evidence and detailed procedures used in establishing the corner positions and monumentation found or placed.)

Monument Description and Remarks: SURVEY DONE IN SE 1/4 SEC. 18-90-13  
NW CORNER (SEC. 20-90-13) - FOUND 1/2" RE-BAR

PLAN - VIEW

(Show a minimum of three reference ties to durable physical objects, relevant monuments and physical conditions that will enable recovery of the corner.)



I hereby certify that this plat, map, survey or report was made by me or under my direct personal supervision and that I am a duly Registered Land Surveyor under the laws of the State of Iowa.  
Paul H. Helland Date 2/10/93  
PAUL H. HELLAND, P. E. & R. L. S. IOWA REGISTRATION NO. 6505  
My registration expires December 31, 1993

HELLAND ENGINEERING & SURVEYING, LTD.  
Thunder Ridge Bank Building  
2322 West First St., Suite B  
Cedar Falls, Iowa 50613  
319-266-0161

List Corners to be Indexed			
Corners	Section	Twp	Range
NW	20	90	13

MISC. BK. 305 p. 114