

Jeffrey P. Helland, 1107 Technology Parkway, Cedar Falls, Iowa 50613-6951, (319)-266-0161

UNITED STATES PUBLIC LAND SURVEY CORNER CERTIFICATE
OFLAND SURVEY MONUMENTS SITUATED IN SECTION NO. 20, TOWNSHIP NO. 90 NORTH, RANGE
NO. 13 WEST OF THE FIFTH PRINCIPAL MERIDIAN, BLACK HAWK COUNTY, IOWA.
PREVIOUSLY RECORDED IN N/A(SHOW REASON FOR PREPARING THIS CERTIFICATE, THE EVIDENCE AND DETAILED PROCEDURES USED IN ESTABLISHING THE
CORNER POSITIONS AND MONUMENTATION FOUND OR PLACED.)

MONUMENT DESCRIPTION AND REMARKS:

NO USPLSCC ON FILE. SURVEY COMPLETED IN THE SW 1/4 OF SEC. 17-T90N-R13W.

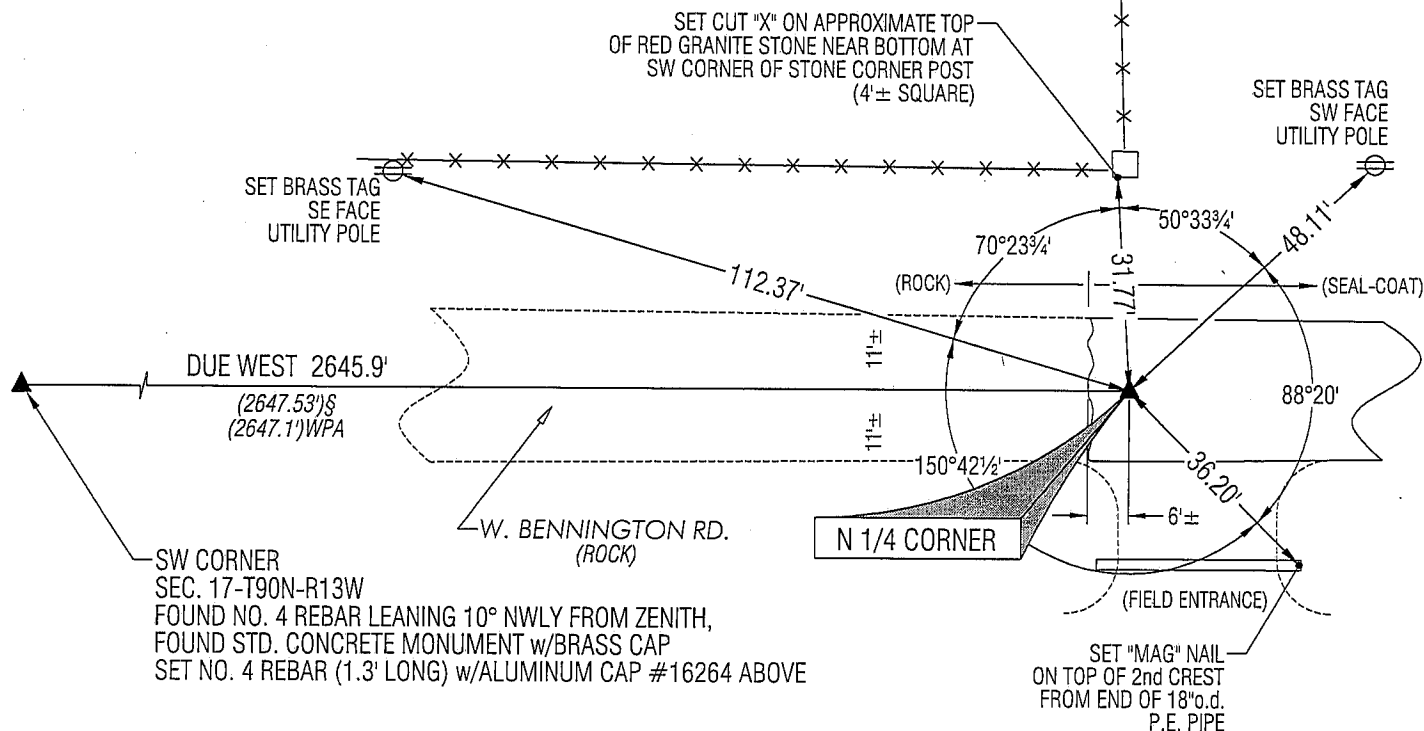
→ **N 1/4 CORNER:** WPA NOTES DATED 7/27/1938 CALLS FOR [FOUND IRON PIPE 1"x22 1/2" AND NIGGERHEAD STONE 10"x7"x4 1/2". LOWERED EVIDENCE & SET C.M. ON TOP 12" DEEP]. BLACK HAWK COUNTY ENGINEER REFERENCE TIES DATED 12/2/1958 INDICATES STD. C.M. WITH SIX OF THE NINE TIES REMAINING. PULLED 27.2' OFF "CORNER POST MADE OUT OF RED GRANITE." THIS TIE DISTANCE FELL 5'± NORTH OF CENTERLINE OF ROAD. INTERSECTED TIE DISTANCES FROM "CEMENT CULVERT" WEST, THIS INTERSECTION FELL IN APPROXIMATE CENTERLINE OF ROAD. STARTED EXCAVATION AT THIS POINT, FOUND STD. CONCRETE MONUMENT w/BRASS CAP 2.1' DEEP. SET NO. 4 REBAR (1.7' LONG) w/ALUMINUM CAP #16264 ABOVE SAID CONCRETE MONUMENT. ALUMINUM CAP IS 0.2'± DEEP IN SEAL-COAT PAVEMENT.

PLAN VIEW

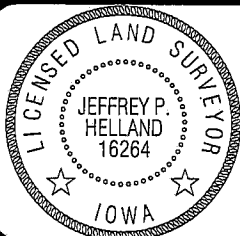
(SHOW A MINIMUM OF THREE REFERENCE TIES TO DURABLE PHYSICAL OBJECTS, RELEVANT MONUMENTS AND PHYSICAL
CONDITIONS THAT WILL ENABLE RECOVERY OF THE CORNER.)

LEGEND

(0.0') WPA PER WPA NOTES DATED 7/27/1938

(0.0') S PER PLAT OF SURVEY DATED 10/3/1983
252 MISC. 909

(BEARINGS ARE ASSUMED)

HELLAND ENGINEERING & SURVEYING, LTD.
1107 Technology Parkway
Cedar Falls, Iowa 50613-6951
(319)-266-0161SHINER = 8D NAIL & 1 5/16" Ø METAL SHINER
BRASS TAG = 13/16" Ø BRASS TAG
OPC = PLASTIC CAP (O=ORANGE, R=RED, Y=YELLOW)
(00) RECORDED AS FILE NAME: 07-157C2.DWGI hereby certify that this land surveying document was prepared
and the related survey work was performed by me or under my
direct personal supervision and that I am a duly licensed Land
Surveyor under the laws of the State of Iowa.Jeffrey P. Helland 4/15/08
Jeffrey P. Helland
License Number 16264
My license renewal date is December 31, 2009.
All pages or sheets are covered by this seal except:

LIST CORNERS TO BE INDEXED

CORNER	SECTION	TOWNSHIP	RANGE
N 1/4 CORNER	20	90N	13W
S 1/4 CORNER	17	90N	13W