



Doc ID: 008314750001 Type: GEN
Recorded: 01/12/2018 at 09:45:40 AM
Fee Amt: \$7.00 Page 1 of 1
Black Hawk County Iowa
SANDIE L. SMITH RECORDER

File 2018-00011785

Reserved for County Recorder's use.

* Kyle J. Helland, 1107 Technology Parkway, Cedar Falls, Iowa 50613-6951, (319)-266-0161

UNITED STATES PUBLIC LAND SURVEY CORNER CERTIFICATE OF

LAND SURVEY MONUMENTS SITUATED IN SECTION NO. 20, TOWNSHIP NO. 90 NORTH, RANGE
NO. 13 WEST OF THE FIFTH PRINCIPAL MERIDIAN, BLACK HAWK COUNTY, IOWA.
PREVIOUSLY RECORDED IN N/A

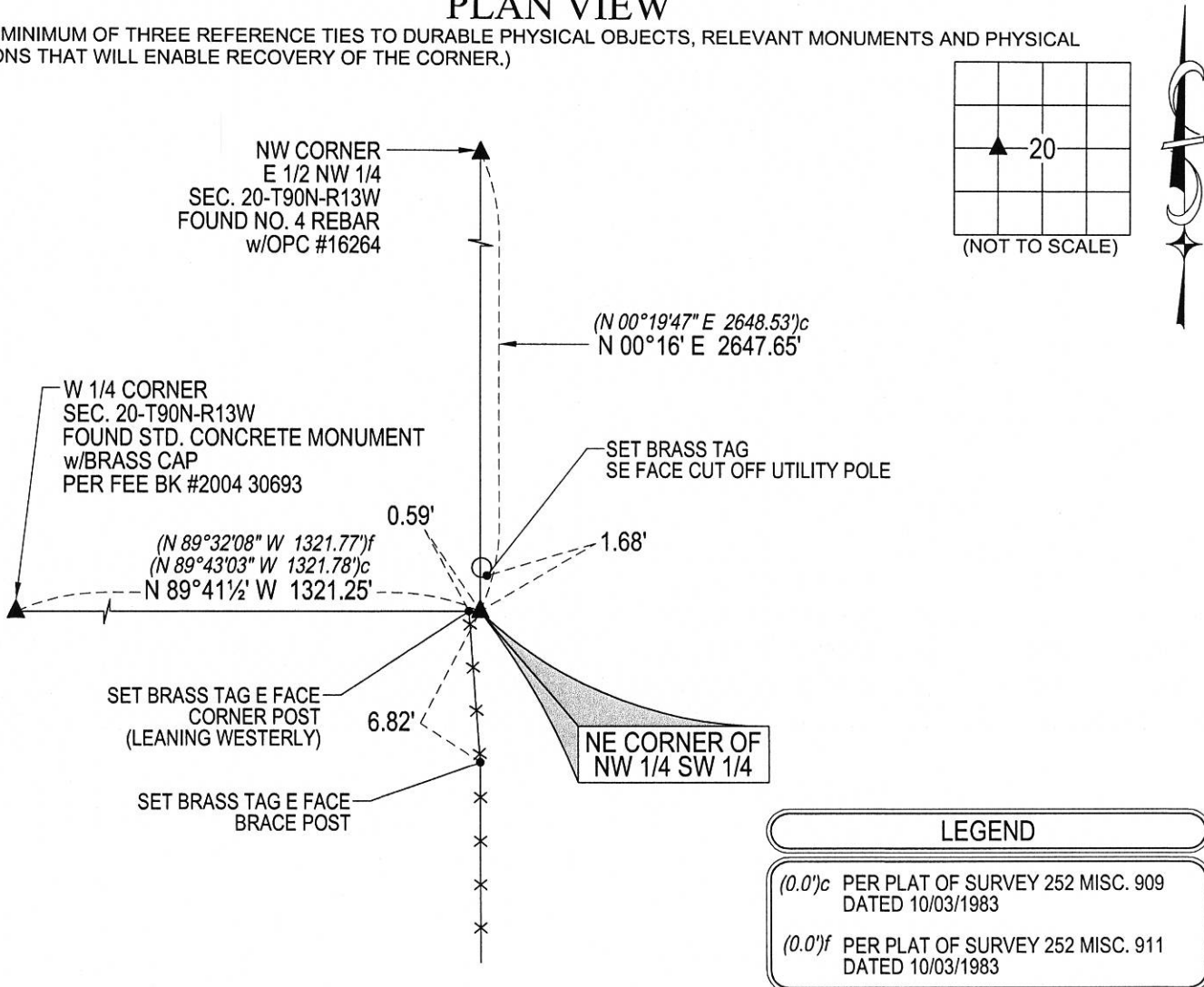
(SHOW REASON FOR PREPARING THIS CERTIFICATE, THE EVIDENCE AND DETAILED PROCEDURES USED IN ESTABLISHING THE
CORNER POSITIONS AND MONUMENTATION FOUND OR PLACED.)

MONUMENT DESCRIPTION AND REMARKS:
NO USPLSCC ON FILE. SURVEY COMPLETED IN THE E 1/2 NW 1/4 & W 1/2 NE 1/4 OF SEC. 20-T90N-R13W.

→ **NE CORNER NW 1/4 SW 1/4:** NO BLACK HAWK COUNTY ENGINEER REFERENCE TIES AVAILABLE. PLAT OF
SURVEY 252 MISC. 911 DATED 10/03/1983 CALLS FOR [FO. COR. POST]. PLAT OF SURVEY 252 MISC. 909 DATED
10/03/1983 CALLS FOR [FO. COR. POST]. SEARCHED AREA, FOUND WOOD CORNER POST LEANING
WESTERLY, SEARCHED AREA AROUND SAID CORNER POST WITH METAL DETECTOR AND PROBED, NOTHING
FOUND. THEREFORE SET NO. 4 REBAR WITH LICENSE #23212 IN LINE WITH FENCING RUNNING SOUTH AND
ON EASTERLY SIDE OF SAID ANCIENT CORNER POST.

PLAN VIEW

(SHOW A MINIMUM OF THREE REFERENCE TIES TO DURABLE PHYSICAL OBJECTS, RELEVANT MONUMENTS AND PHYSICAL
CONDITIONS THAT WILL ENABLE RECOVERY OF THE CORNER.)



(BEARINGS ARE ASSUMED)



HELLAND ENGINEERING & SURVEYING, LTD.
1107 Technology Parkway
Cedar Falls, Iowa 50613-6951
(319)-266-0161

SHINER = 8d. NAIL & 1 5/16"Ø METAL SHINER DRAWN BY: CDR
BRASS TAG = 8d. NAIL & 13/16"Ø BRASS TAG
OPC = PLASTIC CAP (O=ORANGE, R=RED, Y=YELLOW)
(00') RECORDED AS FILE NAME: 17-239-63.DWG



I hereby certify that this land surveying document was prepared
and the related survey work was performed by me or under my
direct personal supervision and that I am a duly licensed
Professional Land Surveyor under the laws of the State of Iowa.
Kyle J. Helland 12/31/17
License Number 23212
My license renewal date is December 31, 2017.
All pages or sheets are covered by this seal except:

| LIST CORNERS TO BE INDEXED | | | |
|----------------------------|---------|----------|-------|
| CORNER | SECTION | TOWNSHIP | RANGE |
| NE COR. NW 1/4 SW 1/4 | 20 | 90N | 13W |
| SE COR. SW 1/4 NW 1/4 | 20 | 90N | 13W |
| SW COR. SE 1/4 NW 1/4 | 20 | 90N | 13W |
| NW COR. NE 1/4 SW 1/4 | 20 | 90N | 13W |