

NOTE: This record is NOT on file w/ Co Recorder. (J.T.)

PAUL H. HELLAND, 1107 TECHNOLOGY PARKWAY, CEDAR FALLS, IOWA 50613, (319) 266-0161

UNITED STATES PUBLIC LAND SURVEY CORNER CERTIFICATE
OF

LAND SURVEY MONUMENTS SITUATED IN SECTION NO. 19, TOWNSHIP NO. T90N, RANGE NO. R13W, OF THE FIFTH PRINCIPAL MERIDIAN, BLACK HAWK COUNTY, IOWA. PREVIOUSLY RECORDED IN BOOK MISC. 305, PAGE 164.

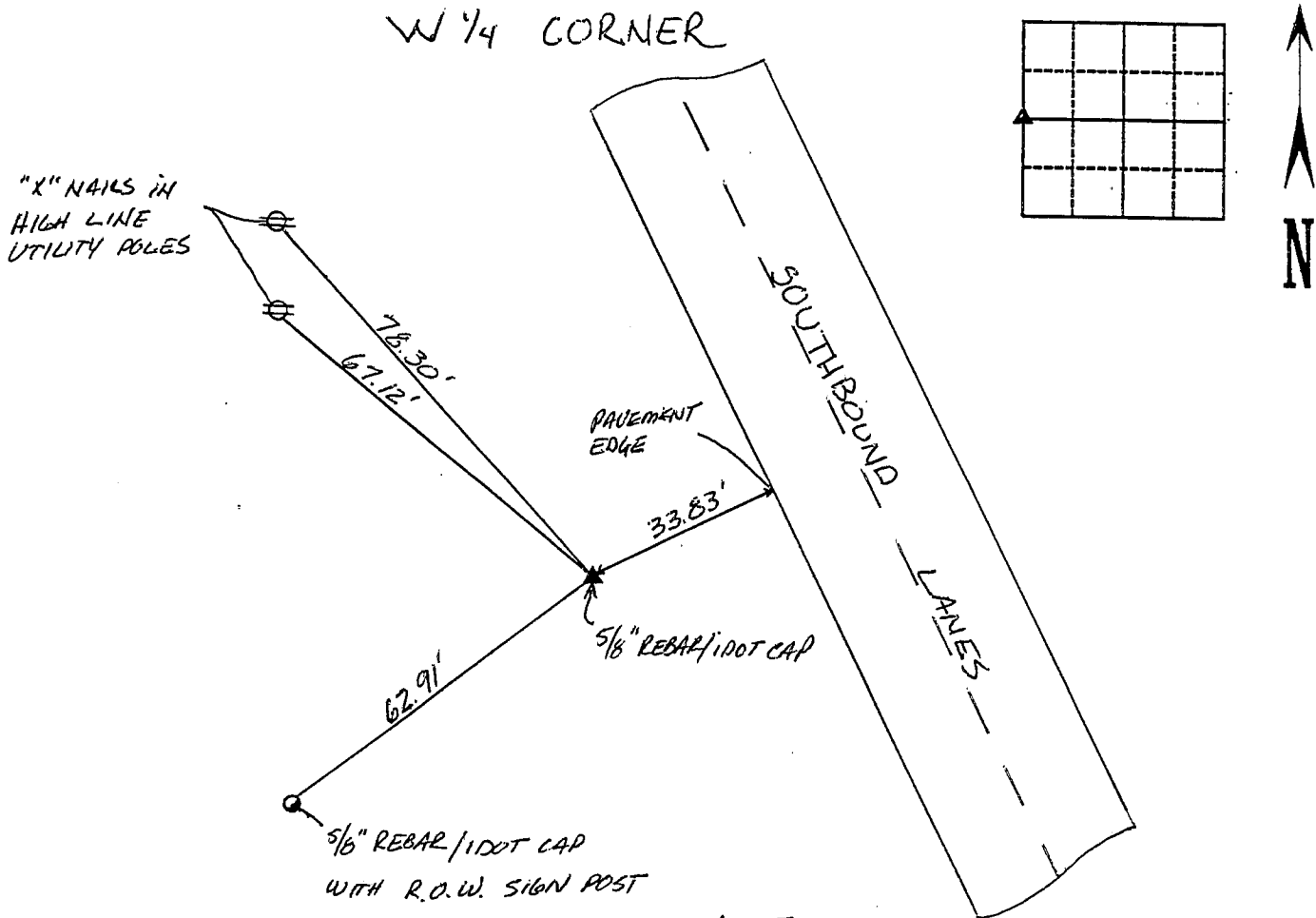
(SHOW REASON FOR PREPARING THIS CERTIFICATED, THE EVIDENCE AND DETAILED PROCEDURES USED IN ESTABLISHING THE CORNER POSITIONS AND MONUMENTATION FOUND OR PLACED.)
MONUMENT DESCRIPTION AND REMARKS:

W 1/4 CORNER FOUND 5/8" REBAR WITH IDOT CAP(C.C. (C.C. CALLS FOR 1" CLIP PIN) BUT THAT WAS PRIOR TO HIGHWAY CONSTRUCTION) 0.7' DEEP.

SURVEY DONE IN SW 1/4 SW 1/4

PLAN VIEW

(SHOW A MINIMUM OF THREE REFERENCE TIES TO DURABLE PHYSICAL OBJECTS, RELEVANT MONUMENTS AND PHYSICAL CONDITIONS THAT WILL ENABLE RECOVERY OF THE CORNER.)

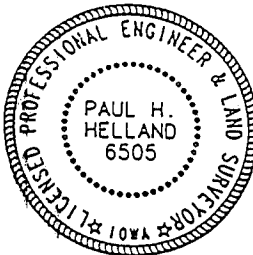


NOTE:
SEE Attachment "Misc. BK. #305 p. 164" J.T.



HELLAND ENGINEERING & SURVEYING, LTD.
1107 Technology Parkway
Cedar Falls, Iowa 50613
(319) 266-0161

98-195



I hereby certify that this land surveying document was prepared and the related survey work was performed by me or under my direct personal supervision and that I am a duly licensed Land Surveyor under the laws of the State of Iowa.
Paul H. Helland
Paul H. Helland
License number 6505
My license renewal date is December 31, 1999.
All pages or sheets are covered by this seal except:

LIST CORNERS TO BE INDEXED			
CORNER	SECTION	TOWNSHIP	RANGE
W 1/4	19	T90N	R13W

Eoy