

SLS19-90

# UNITED STATES PUBLIC LAND SURVEY CORNER CERTIFICATE OF

Land Survey Monuments situated in Section 19, Township T90N, Range R13W, of the Fifth Principal Meridian, BLACK HAWK County, Iowa.  
Previously recorded in \_\_\_\_\_ in County Recorder's Office.

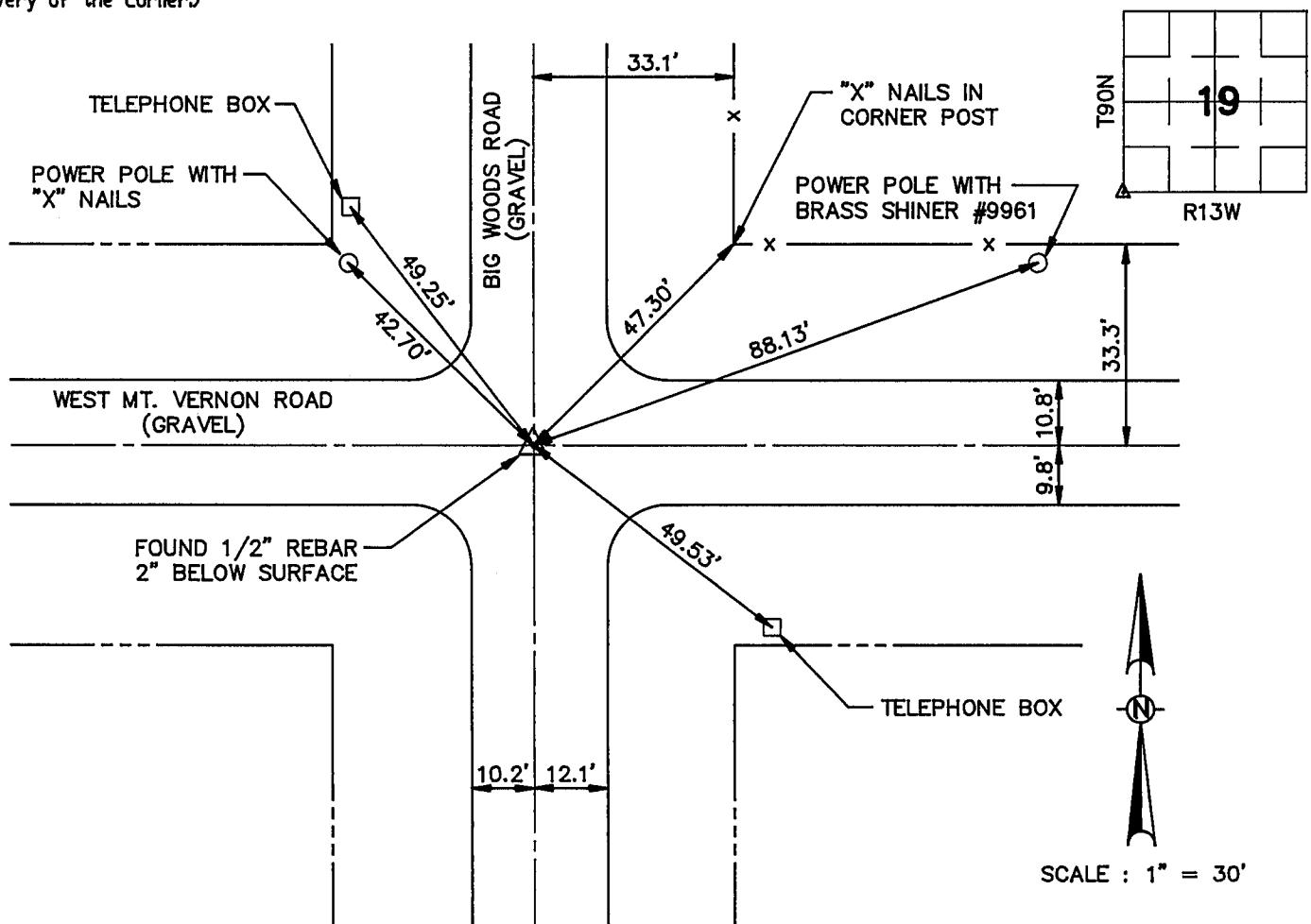
(book, page, document number, etc.)

(Show reason for preparing this certificate, the evidence and detailed procedures used in establishing the corner positions and monumentation found or placed.)

Monument Description and Remarks: FOUND 1/2" REBAR 2" BELOW SURFACE

## PLAN - VIEW

(Show a minimum of three reference ties to durable physical objects, relevant monuments and physical conditions that will enable recovery of the corner.)



I hereby certify that the survey work was completed and this certificate was prepared by me or under my direct personal supervision and that I am a duly registered land surveyor under the laws of the state of Iowa.

Signature: Kirk D. Eschliman

Name typed or printed: Kirk D. Eschliman

Date: 4/21/93 Reg. No. Ia. R.L.S. 9961My Registration Renewal Date is December 31, 1993

J.EAL



WAYNE CLAASSEN ENGINEERING AND SURVEYING, INC.

WATERLOO, IOWA

FIELD BOOK 362 PROJECT NO. 5912.075

Corners	List Corners to be Indexed	Section	Twp	Range
SW	19	T90N	R13W	
NE	24	T90N	R14W	
NE	25	T90N	R14W	

MISC. BK. 305 p. 162