

UNITED STATES PUBLIC LAND SURVEY CORNER CERTIFICATE OF

Land Survey Monuments situated in Section 19, Township T90N, Range R13W, of the Fifth Principal Meridian, BLACK HAWK County, Iowa.
Previously recorded in _____ in County Recorder's Office.

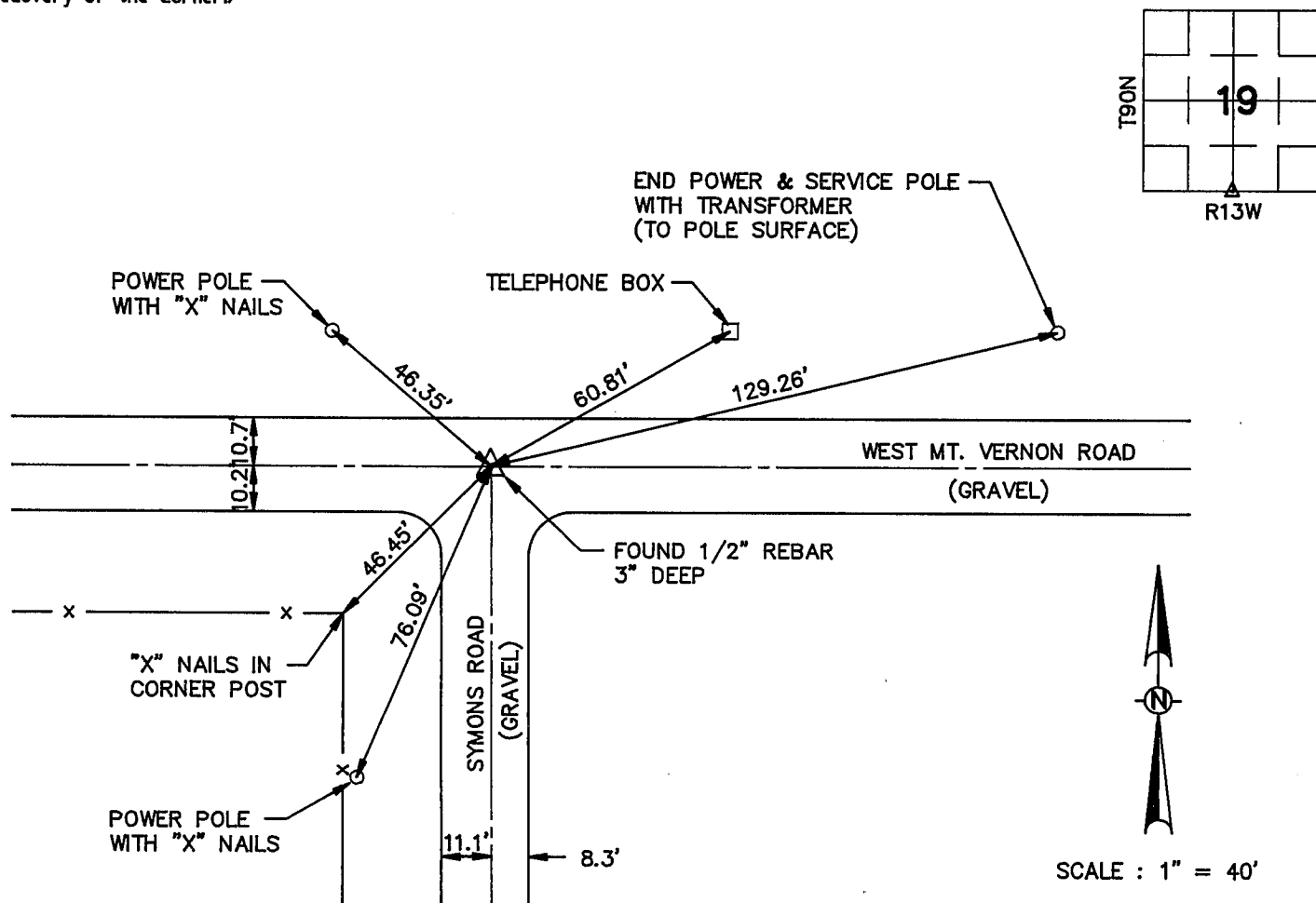
(book, page, document number, etc.)

(Show reason for preparing this certificate, the evidence and detailed procedures used in establishing the corner positions and monumentation found or placed.)

Monument Description and Remarks: FOUND 1/2" REBAR 3" DEEP

PLAN - VIEW

(Show a minimum of three reference ties to durable physical objects, relevant monuments and physical conditions that will enable recovery of the corner.)

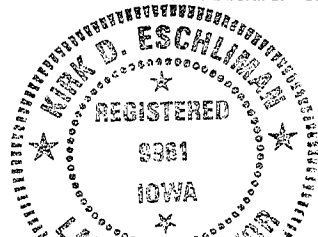


I hereby certify that the survey work was completed and this certificate was prepared by me or under my direct personal supervision and that I am a duly registered land surveyor under the laws of the state of Iowa.

Signature: Kirk D. Eschliman
Name typed or printed: Kirk D. Eschliman

Date: 02/17/93 Reg. No. Ia. RLS. 9961
My Registration Renewal Date Is December 31, 1993

SEAL



WAYNE CLAASSEN ENGINEERING AND SURVEYING, INC.
WATERLOO, IOWA
FIELD BOOK 362 PROJECT NO. 5912.075

| Corners | List Corners to be Indexed Section | Twp | Range |
|---------|------------------------------------|------|-------|
| S1/4 | 19 | T90N | R13W |
| N1/4 | 30 | T90 | R13W |

MISC. BK. 305 p. 160