

IOW
P
Z

Document Number: 2008021911
Date: May 06, 2008 4:30:00 pm
Aud Fee: 0.00 Rec Fee: 5.00
Trans Tax: 0.00 Rec Management Fee: 1.00
E-Com Fee: 1.00 Non-Standard Page Fee: 0.00
Filed for record in Black Hawk County, Iowa
Judith A. McCarthy, County Recorder

Jeffrey P. Helland, 1107 Technology Parkway, Cedar Falls, Iowa 50613-6951, (319)-266-0161

UNITED STATES PUBLIC LAND SURVEY CORNER CERTIFICATE
OF

LAND SURVEY MONUMENTS SITUATED IN SECTION NO. 9, TOWNSHIP NO. 90 NORTH, RANGE NO. 13 WEST OF THE FIFTH PRINCIPAL MERIDIAN, BLACK HAWK COUNTY, IOWA.
PREVIOUSLY RECORDED IN 305 MISC. 114

(SHOW REASON FOR PREPARING THIS CERTIFICATE, THE EVIDENCE AND DETAILED PROCEDURES USED IN ESTABLISHING THE CORNER POSITIONS AND MONUMENTATION FOUND OR PLACED.)

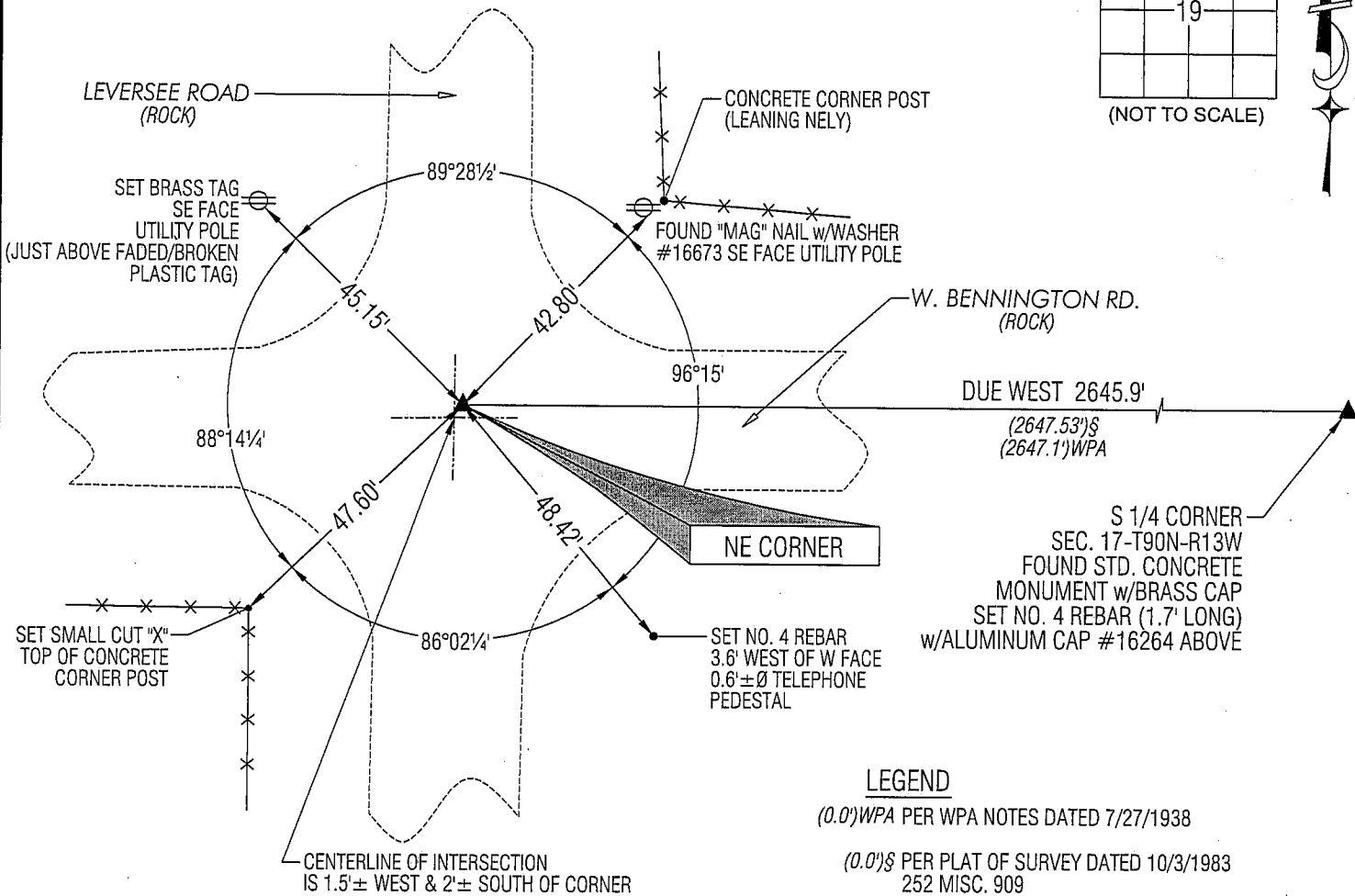
MONUMENT DESCRIPTION AND REMARKS:

REFERENCE TIES AND MONUMENTATION OF USPLSCC 305 MISC. 114 HAVE CHANGED. SURVEY COMPLETED IN THE SW 1/4 OF SEC. 17-T90N-R13W.

NE CORNER: USPLSCC 305 MISC. 114 CALLS FOR [FOUND 1/2" REBAR]. WPA NOTES DATED 7/29/1938 CALLS FOR [FOUND STEEL ROD 23" LONG AND 16 PENNY NAIL...SET C.M. 12" DEEP]. BLACK HAWK COUNTY ENGINEER REFERENCE TIES DATED 12/2/1958 INDICATES STD. C.M. WITH FOUR OF THE SEVEN TIES REMAINING. FOUND NO. 4 REBAR (1.95' LONG) LEANING NWLY 5°-10° FROM ZENITH, REMOVED SAID REBAR AND CONTINUED EXCAVATION. FOUND STD. CONCRETE MONUMENT W/BRASS CAP 1.7' DEEP. SET NO. 4 REBAR (1.3' LONG) W/ALUMINUM CAP #16264 ABOVE SAID CONCRETE MONUMENT. TOP OF LEANING REBAR WAS WITHIN 0.01'± OF BEING ABOVE CENTER OF SAID CONCRETE MONUMENT. ALUMINUM CAP IS 0.2'± DEEP.

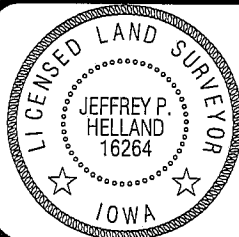
(SHOW A MINIMUM OF THREE REFERENCE TIES TO DURABLE PHYSICAL OBJECTS, RELEVANT MONUMENTS AND PHYSICAL CONDITIONS THAT WILL ENABLE RECOVERY OF THE CORNER.)

PLAN VIEW



HELLAND ENGINEERING & SURVEYING, LTD.
1107 Technology Parkway
Cedar Falls, Iowa 50613-6951
(319)-266-0161

SHINER = 8D NAIL & 1 5/16"Ø METAL SHINER
BRASS TAG = 13/16"Ø BRASS TAG
OPC = PLASTIC CAP (O=ORANGE, R=RED, Y=YELLOW)
(00) RECORDED AS FILE NAME: 07-157C1.DWG



I hereby certify that this land surveying document was prepared and the related survey work was performed by me or under my direct personal supervision and that I am a duly licensed Land Surveyor under the laws of the State of Iowa.

Jeffrey P. Helland 4/15/08
Jeffrey P. Helland
License Number 16264
My license renewal date is December 31, 2009.
All pages or sheets are covered by this seal except:

LIST CORNERS TO BE INDEXED

CORNER	SECTION	TOWNSHIP	RANGE
NE CORNER	19	90N	13W
SE CORNER	18	90N	13W
SW CORNER	17	90N	13W
NW CORNER	20	90N	13W