

Reserved for County Recorder's use.

Kyle J. Helland, 1107 Technology Parkway, Cedar Falls, Iowa 50613-6951, (319)-266-0161

# UNITED STATES PUBLIC LAND SURVEY CORNER CERTIFICATE OF

LAND SURVEY MONUMENTS SITUATED IN SECTION NO. 19, TOWNSHIP NO. 90 NORTH, RANGE NO. 13 WEST OF THE FIFTH PRINCIPAL MERIDIAN, BLACK HAWK COUNTY, IOWA.  
PREVIOUSLY RECORDED IN FEE BOOK #2004 30693

(SHOW REASON FOR PREPARING THIS CERTIFICATE, THE EVIDENCE AND DETAILED PROCEDURES USED IN ESTABLISHING THE CORNER POSITIONS AND MONUMENTATION FOUND OR PLACED.)

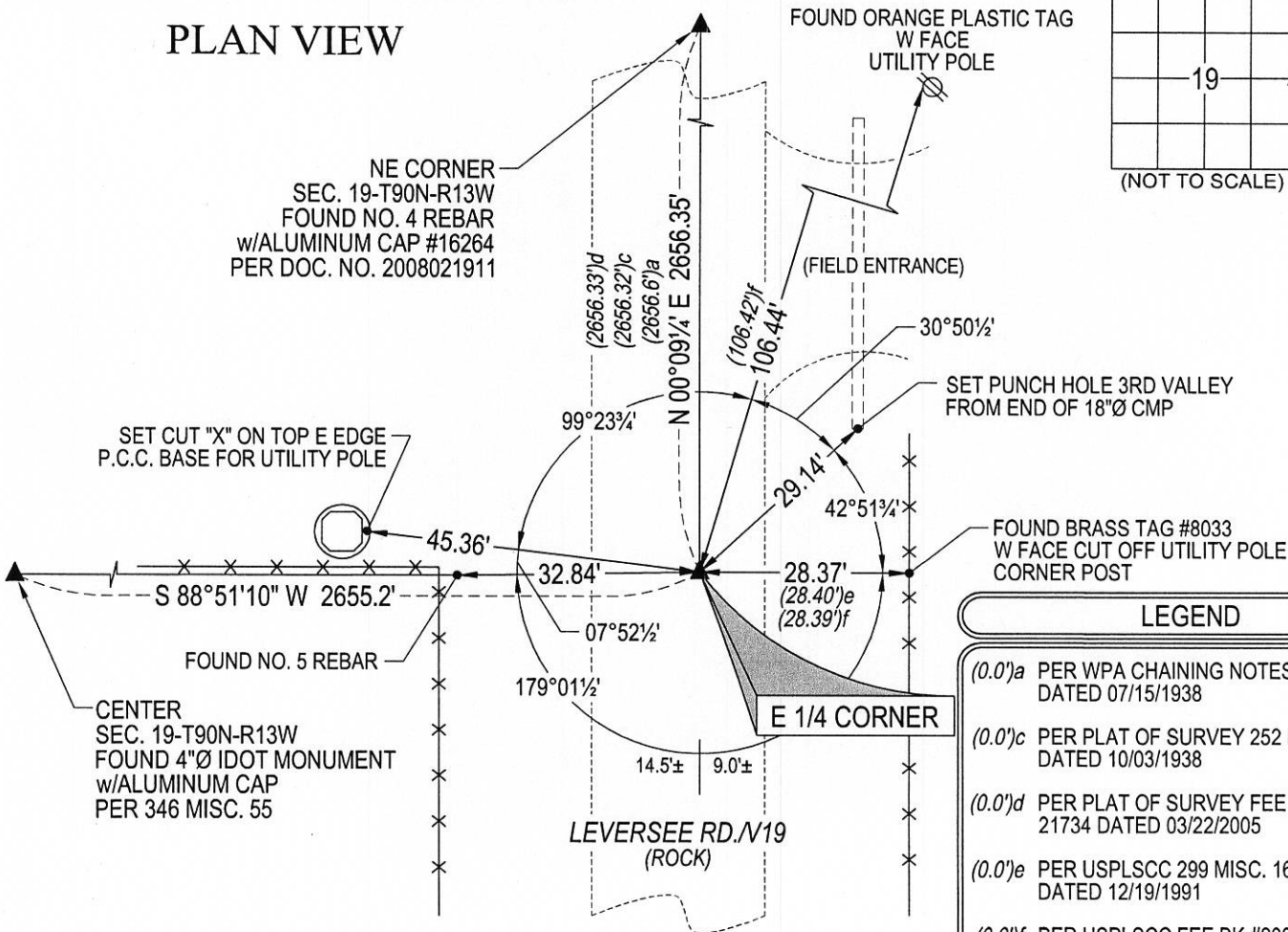
## MONUMENT DESCRIPTION AND REMARKS:

ONLY TWO REFERENCE TIES REMAIN. SURVEY COMPLETED IN THE NE 1/4 OF SEC. 19-T90N-R13W.

→ **E 1/4 CORNER:** USPLSCC IN MISC. BOOK 299 PAGE 165 DATED 12/19/1991 CALLS FOR [FOUND 3/4"Ø OPEN PIPE 1" DEEP USING CES TIES OF 1971. CES FOUND SCM 12" DEEP 3-22-1971 & SET PIPE OVER.]. USPLSCC IN FEE BOOK #2004 30693 DATED 03/30/2004 CALLS FOR [299 MISC. 165 CALLS FOR (3/4"Ø OPEN PIPE). FOUND 1"Ø.d. IRON PIPE (6" LONG) BENT NORTHERLY FLUSH WITH ROCK ROAD SURFACE. REMOVED SAID 1"Ø.d. IRON PIPE AND CONTINUED EXCAVATION. FOUND CONCRETE MONUMENT w/BRASS CAP 0.5' DEEP. SET NO. 4 REBAR ON SOUTH SIDE OF SAID CONCRETE MONUMENT FOR MAGNETIC DETECTION.]. SEARCHED AREA, FOUND CONCRETE MONUMENT w/BRASS CAP (0.5' DEEP) w/NO. 4 REBAR (ALSO 0.5' DEEP) ON SOUTH EDGE OF SAID FOUND CONCRETE MONUMENT.

(SHOW A MINIMUM OF THREE REFERENCE TIES TO DURABLE PHYSICAL OBJECTS, RELEVANT MONUMENTS AND PHYSICAL CONDITIONS THAT WILL ENABLE RECOVERY OF THE CORNER.)

## PLAN VIEW



(BEARINGS ARE ASSUMED)

LEGEND	
(0.0)a	PER WPA CHAINING NOTES DATED 07/15/1938
(0.0)c	PER PLAT OF SURVEY 252 MISC. 909 DATED 10/03/1938
(0.0)d	PER PLAT OF SURVEY FEE BK #2005 21734 DATED 03/22/2005
(0.0)e	PER USPLSCC 299 MISC. 165 DATED 12/19/1991
(0.0)f	PER USPLSCC FEE BK #2004 30693 DATED 03/30/2004



HELLAND ENGINEERING & SURVEYING, LTD.  
1107 Technology Parkway  
Cedar Falls, Iowa 50613-6951  
(319)-266-0161

SHINER = 8d. NAIL & 1 5/16"Ø METAL SHINER DRAWN BY: JBL  
BRASS TAG = 8d. NAIL & 13/16"Ø BRASS TAG  
OPC = PLASTIC CAP (O=ORANGE, R=RED, Y=YELLOW)  
(00') RECORDED AS FILE NAME: 17-251-22.DWG



I hereby certify that this land surveying document was prepared and the related survey work was performed by me or under my direct personal supervision and that I am a duly licensed Professional Land Surveyor under the laws of the State of Iowa.  
*Kyle J. Helland* 2/9/18  
Kyle J. Helland  
License Number 23212  
My license renewal date is December 31, 2019.  
All pages or sheets are covered by this seal except:

LIST CORNERS TO BE INDEXED			
CORNER	SECTION	TOWNSHIP	RANGE
E 1/4 CORNER	19	90N	13W
W 1/4 CORNER	20	90N	13W