

*Jeffrey P. Helland*

PAUL HELLAND

Jeffrey P. Helland, 1107 Technology Parkway, Cedar Falls, Iowa 50613-6951, (319)-266-0161

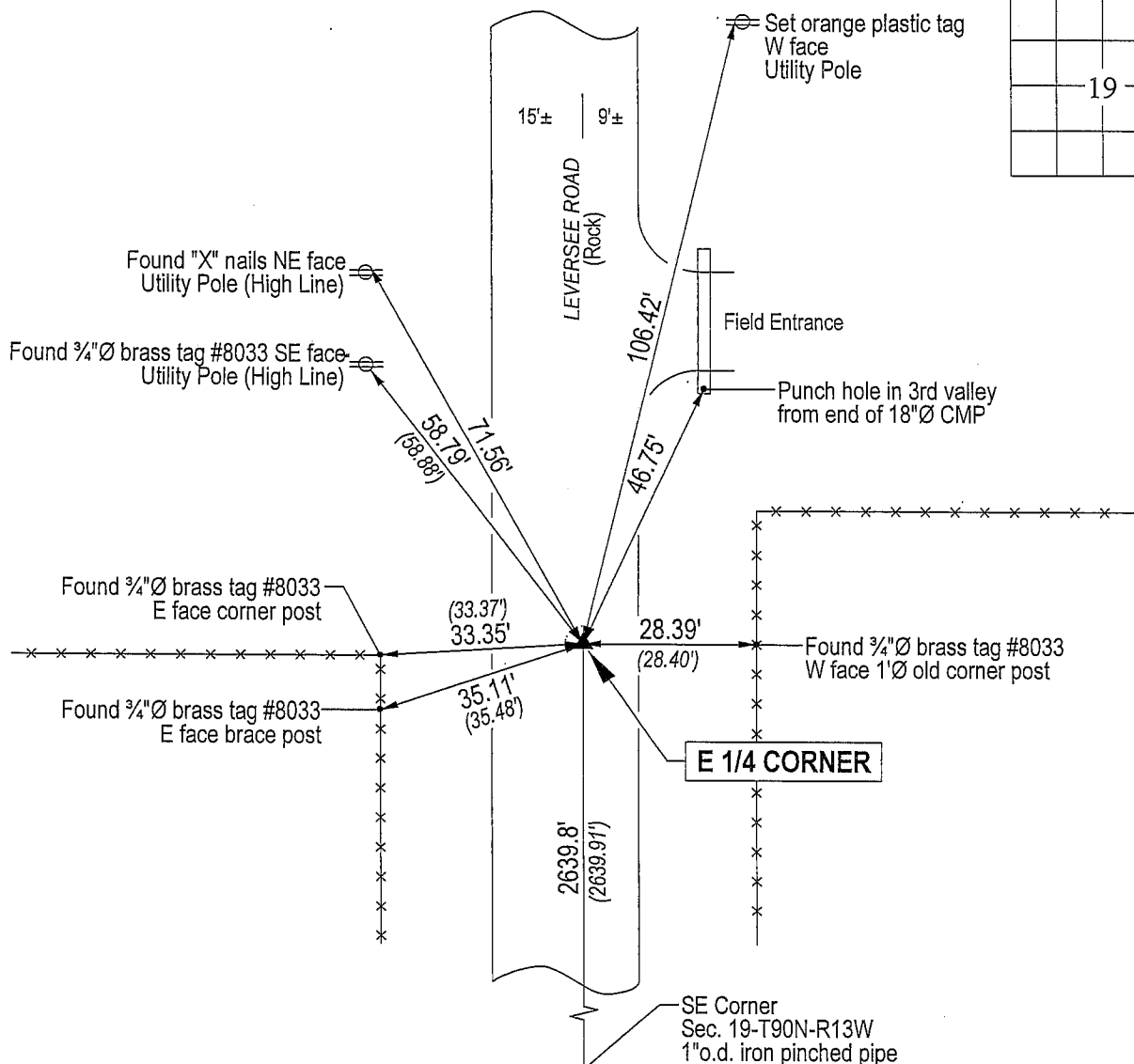
UNITED STATES PUBLIC LAND SURVEY CORNER CERTIFICATE  
OFLAND SURVEY MONUMENTS SITUATED IN SECTION NO. 19, TOWNSHIP NO. 90 NORTH, RANGE  
NO. 13 WEST OF THE FIFTH PRINCIPAL MERIDIAN, BLACK HAWK COUNTY, IOWA.PREVIOUSLY RECORDED IN BOOK 299, PAGE 165.(SHOW REASON FOR PREPARING THIS CERTIFICATE, THE EVIDENCE AND DETAILED PROCEDURES USED IN ESTABLISHING THE  
CORNER POSITIONS AND MONUMENTATION FOUND OR PLACED.)

## MONUMENT DESCRIPTION AND REMARKS:

Monumentation per 299 Misc. 165 has changed. Survey completed in the SE 1/4 SE 1/4 Sec. 19-T90N-R13W.

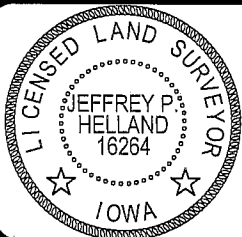
→ E 1/4 CORNER: 299 Misc. 165 calls for (3/4"Ø open pipe). Found 1"o.d. iron pipe (6" long) bent Northerly flush with  
rock road surface. Removed said 1"o.d. iron pipe and continued excavation. Found concrete monument w/brass cap  
0.5' deep. Set No. 4 rebar on South side of said concrete monument for magnetic detection.

## PLAN VIEW

(SHOW A MINIMUM OF THREE REFERENCE TIES TO DURABLE PHYSICAL OBJECTS, RELEVANT MONUMENTS AND PHYSICAL  
CONDITIONS THAT WILL ENABLE RECOVERY OF THE CORNER.)HELLAND ENGINEERING & SURVEYING, LTD.  
1107 Technology Parkway  
Cedar Falls, Iowa 50613-6951  
(319)-266-0161

(00.00') - Recorded As

File Name: 04-149c1.drg

I hereby certify that this land surveying document was prepared  
and the related survey work was performed by me or under my  
direct personal supervision and that I am a duly licensed Land  
Surveyor under the laws of the State of Iowa.*Jeffrey P. Helland* 3/30/04Jeffrey P. Helland  
License Number 16264

My license renewal date is December 31, 2005.

All pages or sheets are covered by this seal except:

LIST CORNERS TO BE INDEXED  
CORNER SECTION TOWNSHIP RANGE  
E 1/4 CORNER 19 90N 13W

Rec