

United States Public Land Survey Corner Certificate

Land Survey Monument situated in
Section **19**, Township **90** North, Range **13** West of the Fifth Principal Meridian, **Black Hawk** County, Iowa.
On file in **Book 346, Page 55** in the County Recorder's office.

This certificate is being prepared in compliance with Iowa Code Chapter 355.11 because:

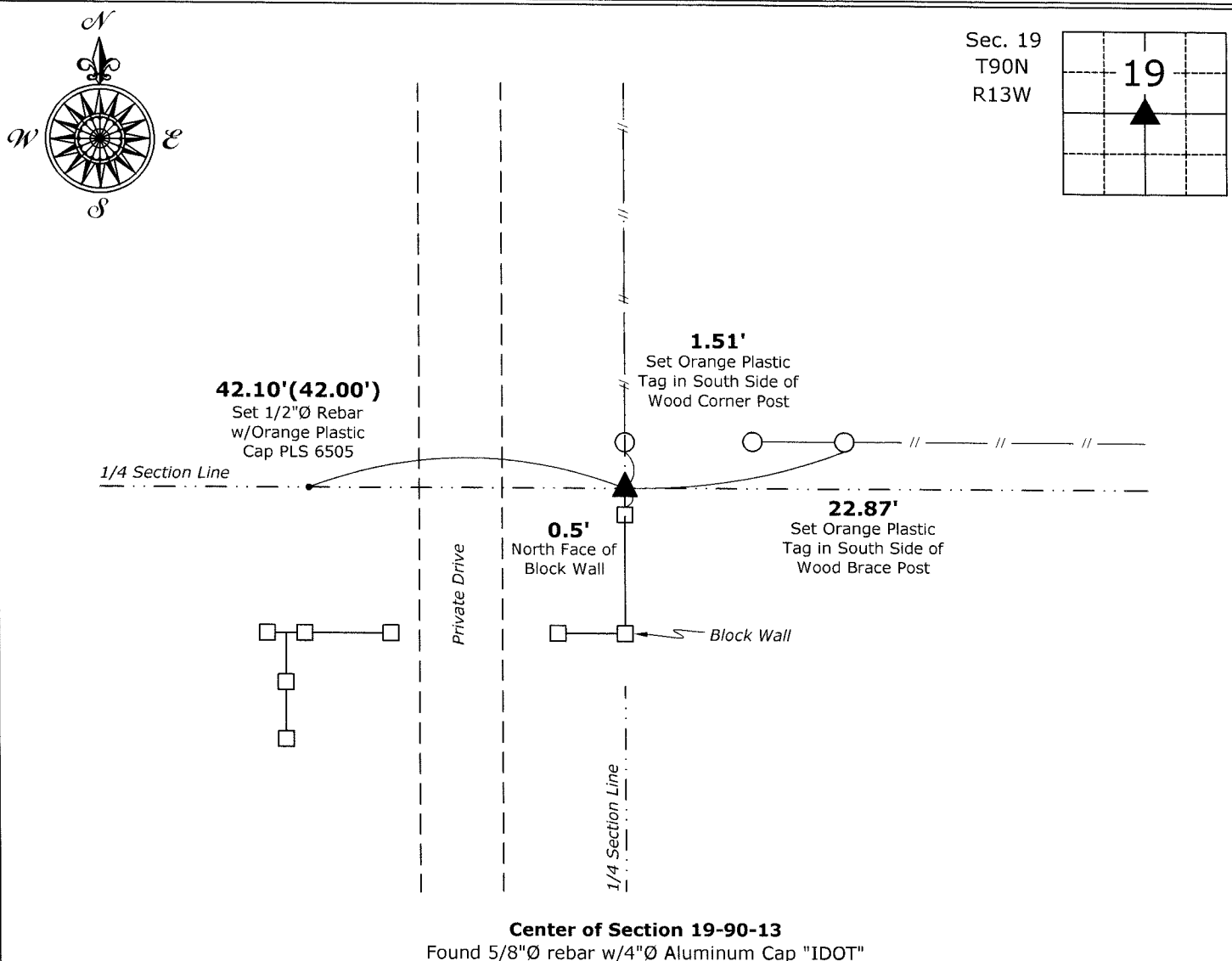
- ☐ There is no certificate on file for this corner.
☒ There are no longer three valid ties of record.
☐ There are changes to reference ties of record.
☐ There is change of monumentation of record.
☐ To clarify description of record monument (ties).

Monument Description and Remarks:

Center of Section: Found 5/8"Ø rebar w/4"Ø Aluminum Cap "IDOT" with information obtained from the previously recorded Section Corner Certificate.

Plan View

(Show a minimum of three reference ties to durable physical objects, relevant monuments and physical conditions that will enable recovery of the corner.)



I hereby certify that this land surveying document was prepared and the related survey work was performed by me or under my direct personal supervision and that I am a duly licensed Land Surveyor under the laws of the State of Iowa.

Isaiah M. Reicks 5-6-19

License number 22468
My license renewal date is December 31, 2019.
Sheets covered by this seal: Individual sheet only

List Corner to be Indexed

Corner	Section	Twp.	Range
CTR	19	90	13

Project Number: 2019-518

File Number: 2019-00019508 Seq: 1