

MISC SC  
INDEX  
MARGIN  
PROOF  
COMPARISON

BLACK HAWK COUNTY IOWA:SS  
Filed for record JUL 31, 1997  
at 12:30PM, and recorded in Book 326  
of MISC Page 480

2044

County Assessor

Patricia J. Sess Recorder  
Fee N/C  
BLACK HAWK COUNTY ENGINEER

PREPARED BY: BLACK HAWK COUNTY ENGINEERS OFFICE  
316 E. FIFTH STREET, ROOM 211 WATERLOO, IOWA 50703

PH.# (319) 291-2419  
FAX# (319) 291-2461

SLSI 9-94  
CERT 12-98

UNITED STATES PUBLIC LAND SURVEY CORNER CERTIFICATE OF  
Land Survey Monuments situated in Section 18, Township 90 N,  
Range 13 W, of the Fifth Principal Meridian, BLACK HAWK County, Iowa.  
Previously recorded in Book N/A, Page N/A, in County Recorder's Office.

(Show reason for preparing this certificate, the evidence and detailed procedures used in establishing the corner positions and monumentation found or placed.)

Monument Description and Remarks:

'N. 1/4' FND. RESET 5/8" REBAR FLUSH W/ A.C.C. SURF. @ 11.6' S. OF N.  
EDGE ROAD, ALIGNED WITH N. AND S. FENCE LINES.

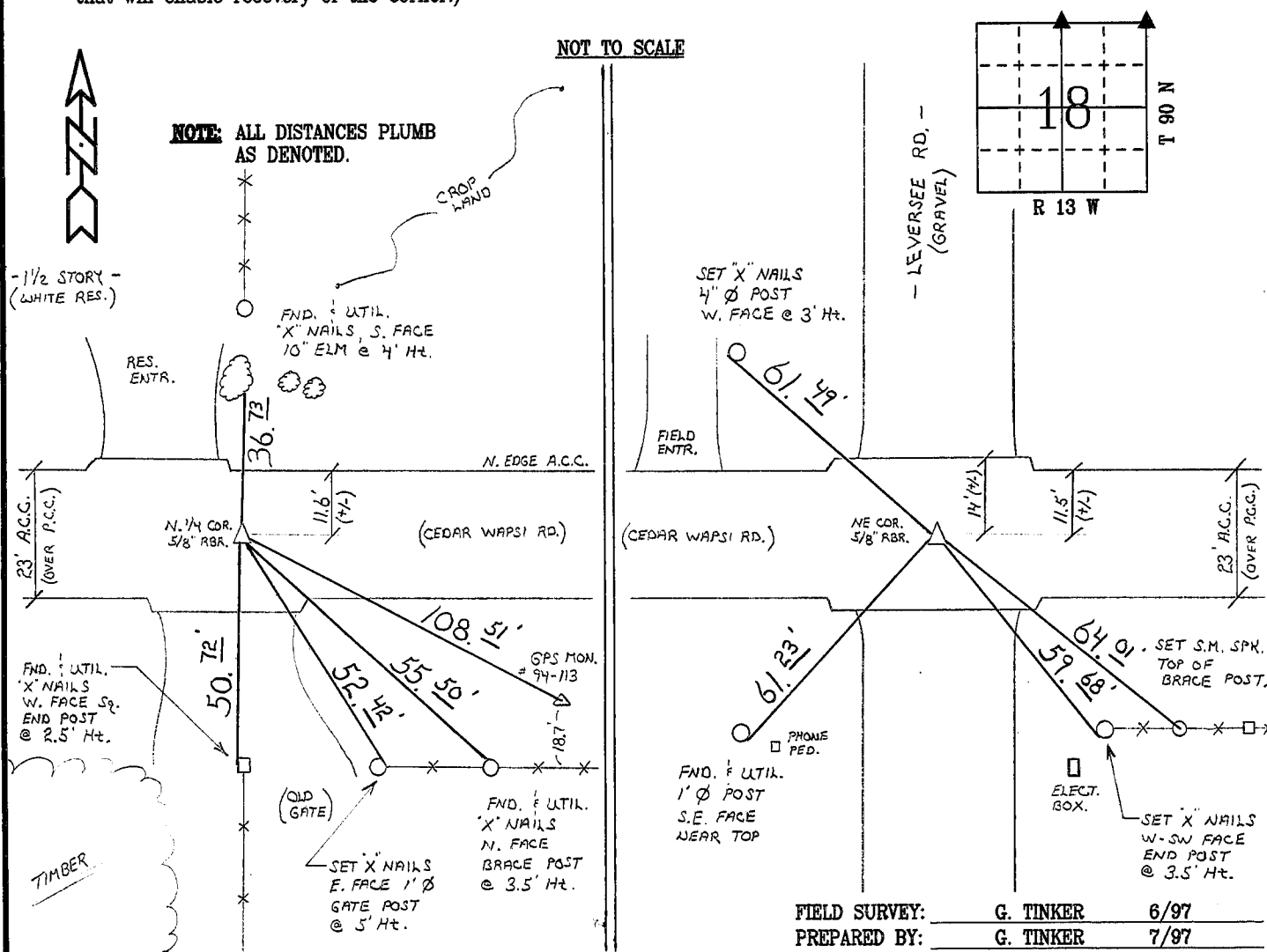
'N.E. CORNER' FND. RESET 5/8" REBAR APPROX. CENTERLINE INTERSECTION  
WITH LEVERSEE ROAD, AS DENOTED.

MONUMENTS RE-EST, 1995 RESURFACING PROJECT.

### PLAN - VIEW

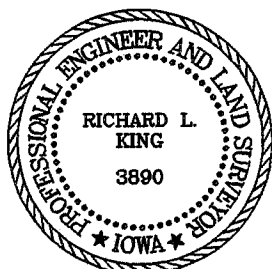
(Show a minimum of three reference ties to durable physical objects, relevant monuments and physical conditions that will enable recovery of the corner.)

NOT TO SCALE



FIELD SURVEY: G. TINKER 6/97  
PREPARED BY: G. TINKER 7/97

### CERTIFICATION



I hereby certify that this land surveying document was prepared and the related survey work was performed by me or under my direct personal supervision and that I am a duly licensed Land Surveyor under the laws of the State of Iowa.

Richard L. King 7/25/97 (date)

License Number 3890

My license renewal date is December 31, 1997

Pages or sheets covered by this seal:

This Land Corner Certificate Only.

### LIST CORNERS TO BE INDEXED

| Corner    | Section | Township | Range |
|-----------|---------|----------|-------|
| N. 1/4    | 18      | 90 N     | 13 W  |
| N.E. COR. | 18      | 90 N     | 13 W  |