

Jeffrey P. Helland, 1107 Technology Parkway, Cedar Falls, Iowa 50613-6951, (319)-266-0161

# UNITED STATES PUBLIC LAND SURVEY CORNER CERTIFICATE OF

LAND SURVEY MONUMENTS SITUATED IN SECTION NO. 17, TOWNSHIP NO. 90 NORTH, RANGE  
NO. 13 WEST OF THE FIFTH PRINCIPAL MERIDIAN, BLACK HAWK COUNTY, IOWA.  
PREVIOUSLY RECORDED IN FEE BOOK #2003 26209

(SHOW REASON FOR PREPARING THIS CERTIFICATE, THE EVIDENCE AND DETAILED PROCEDURES USED IN ESTABLISHING THE CORNER POSITIONS AND MONUMENTATION FOUND OR PLACED.)

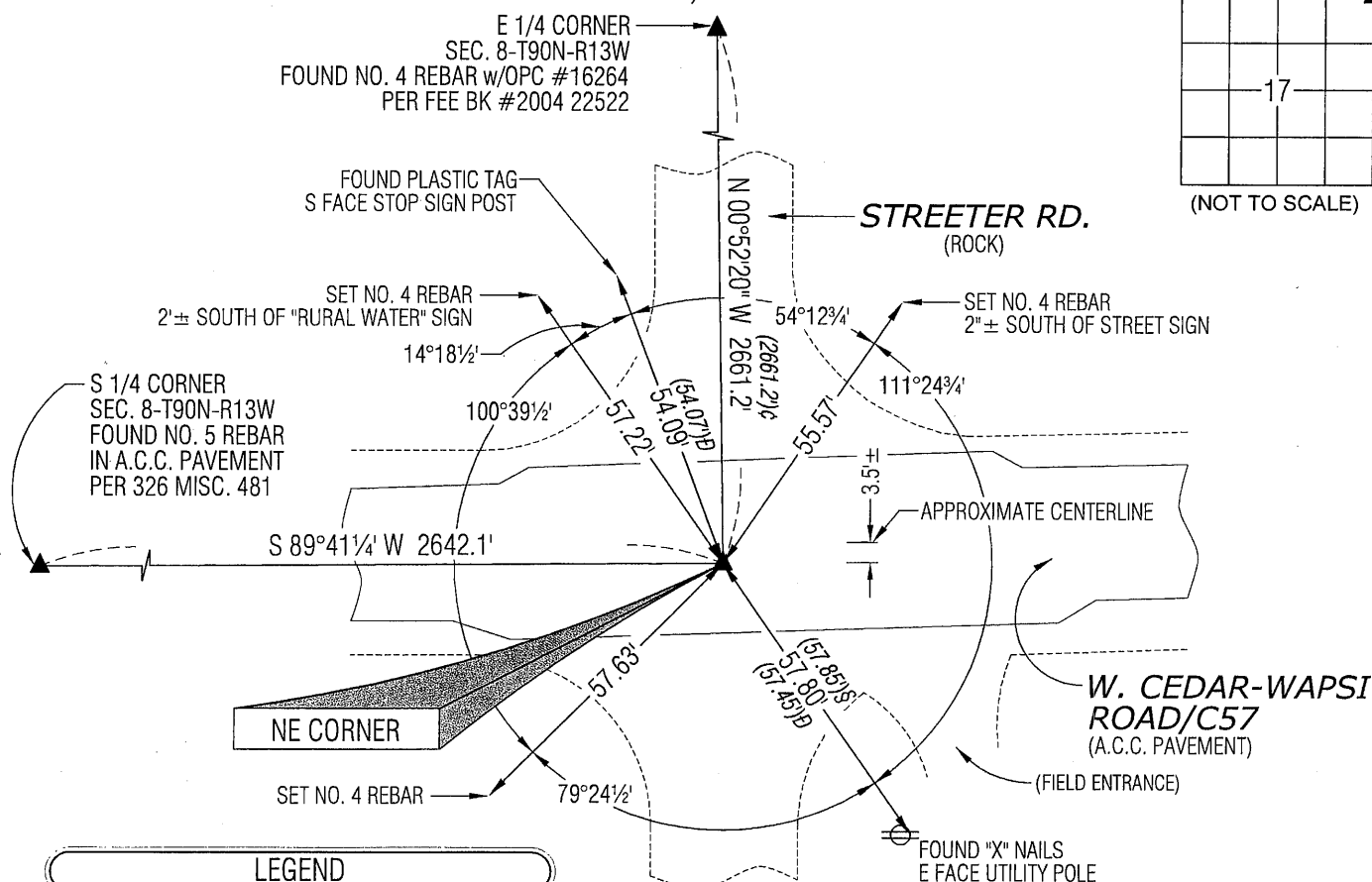
MONUMENT DESCRIPTION AND REMARKS:

USPLSCC FEE BOOK #2003 26209 REFERENCE TIES HAVE CHANGED. SURVEY COMPLETED IN THE SE 1/4 OF SEC. 8-T90N-R13W.

→ NE CORNER: USPLSCC IN MISC. BOOK 326 PAGE 481 DATED 7/25/1997 CALLS FOR [FND. RESET 5/8" REBAR APPROX. CENTERLINE INTERSECTION WITH STREETER ROAD]. USPLSCC IN FEE BOOK #2003 26209 DATED 8/5/2002 CALLS FOR [FOUND 5/8" REBAR]. PLAT OF SURVEY IN FEE BOOK #2004 22523 DATED 1/6/2004 CALLS FOR [FOUND NO. 5 REBAR IN A.C.C. PAVEMENT PER 326 MISC. 481]. FOUND NO. 5 REBAR IN A.C.C. PAVEMENT PER FEE BOOK #2003 26209. SAID CORNER IS 3.5'± SOUTH OF APPROXIMATE CENTERLINE.

### PLAN VIEW

(SHOW A MINIMUM OF THREE REFERENCE TIES TO DURABLE PHYSICAL OBJECTS, RELEVANT MONUMENTS AND PHYSICAL CONDITIONS THAT WILL ENABLE RECOVERY OF THE CORNER.)



## LEGEND

(0.0)'¢ PER PLAT OF SURVEY FEE BK #2004 22523  
DATED 1/16/2004

(0.0')§ PER USPLSCC BK 326 PG 481  
DATED 7/25/1997

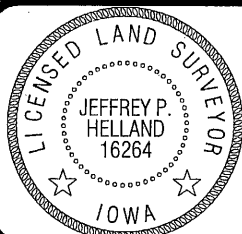
(0.0)D PER USPLSCC FEE BK #2003 26209  
DATED 8/5/2002

(BEARINGS ARE ASSUMED)



**HELLAND ENGINEERING & SURVEYING, LTD.**  
1107 Technology Parkway  
Cedar Falls, Iowa 50613-6951  
(319)-266-0161

SHINER = 8D NAIL & 1 5/16"Ø METAL SHINER  
BRASS TAG = 8D NAIL & 13/16"Ø BRASS TAG  
OPC = PLASTIC CAP (O=ORANGE, R=RED, Y=YELLOW)  
(00') RECORDED AS FILE NAME: 11-157C2.DWG



I hereby certify that this land surveying document was prepared and the related survey work was performed by me or under my direct personal supervision and that I am a duly licensed Land Surveyor under the laws of the State of Iowa.

Jeffrey P. Helland  
License Number 16264  
My license renewal date is December 31, 2011.  
All pages or sheets are covered by this seal except:

LIST CORNERS TO BE INDEXED

CORNER	SECTION	TOWNSHIP	RANGE
NE CORNER	17	90N	13W
SE CORNER	8	90N	13W
SW CORNER	9	90N	13W
NW CORNER	16	90N	13W

9.00

Rec