



Doc ID: 004883500001 Type: GEN
Kind: CORNER
Recorded: 01/12/2012 at 11:10:58 AM
Fee Amt: \$7.00 Page 1 of 1
Black Hawk County Iowa
JUDITH A MCCARTHY RECORDER
File **2012-00012942**

gpn WAYNE CLAASSEN ENGINEERING AND SURVEYING, INC.
P.O. BOX 898 WATERLOO, IOWA 50704-0898

PHONE: (VOICE) 319-235-6294
(FAX) 319-235-0028

UNITED STATES PUBLIC LAND SURVEY CORNER CERTIFICATE

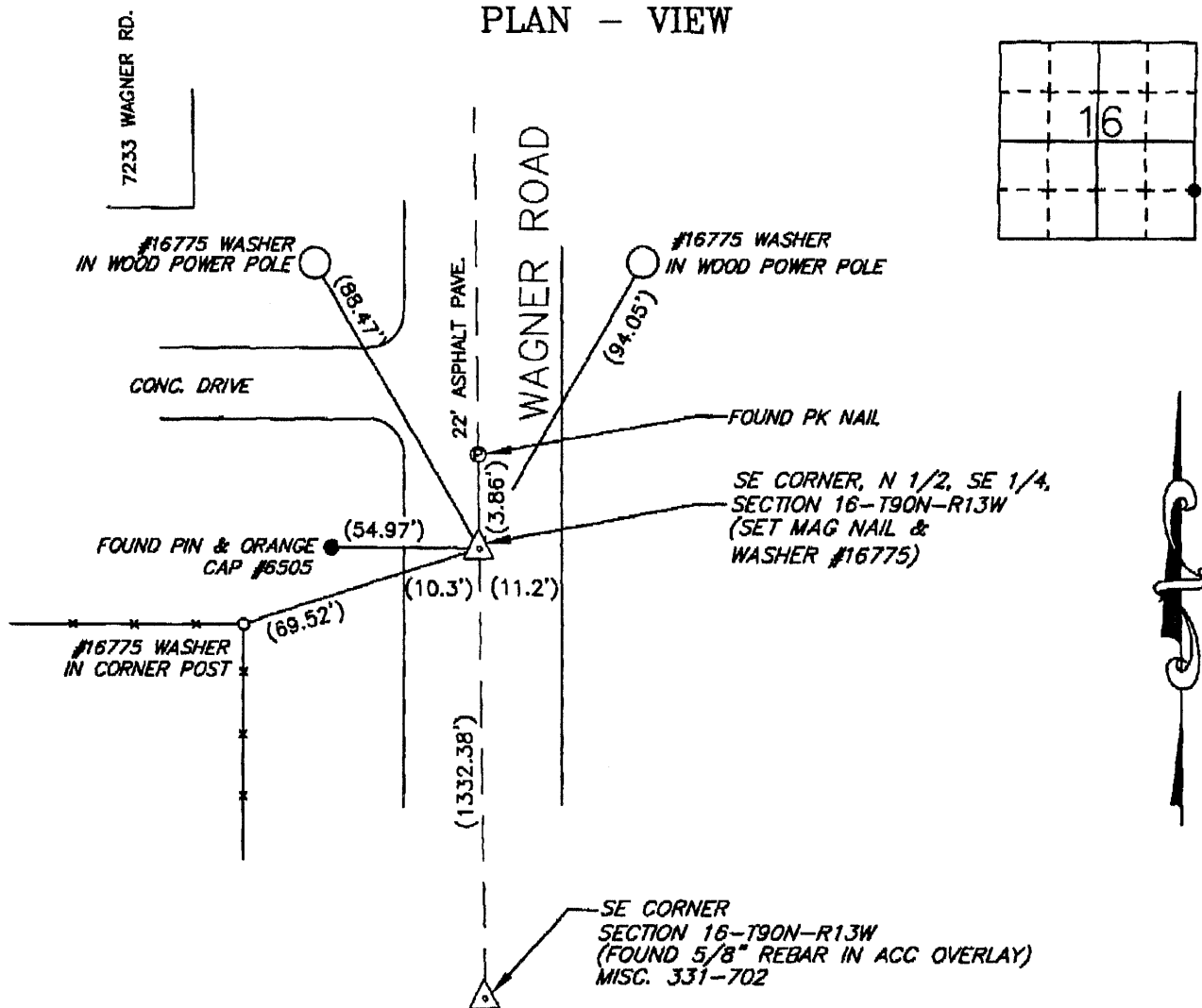
Land Survey Monuments situated in Section 16, Township 90 North, Range 13 West, of the Fifth Principal Meridian, Black Hawk County, Iowa.

Previously recorded in _____ in County Recorder's Office.
(book, page, document number, etc.)

Monument Description and Remarks

Set a mag nail and washer at the Southeast corner of Parcel "A", Misc. Book 337, Page 61 in the Black Hawk County Recorder's office. This certificate was filed because there is no certificate on file.

PLAN - VIEW



BK 686-26

I hereby certify that this land surveying document was prepared and the related survey work was performed by me or under my direct personal supervision and that I am a duly Licensed Land Surveyor under the laws of the State of Iowa.

Signature: _____
David L. Schell, L.S.

Date: _____ Lic. No. 16775

Pages or Sheets Covered by this Seal: THIS SHEET ONLY.

My license renewal date is December 31, 2012

SEAL

List Corners to be Indexed

Corners	Section	Twp	Range
SE CORNER, N 1/2, SE 1/4	16	90 N	13 W

