

PROOF FILED FOR RECORD JUN 10 2002 AT 4:00 P.M. FEE 1-5.00X

COMPARED

Patricia A. Less

BLACK HAWK COUNTY RECORDER

HELLAND ENGINEERING & SURVEYING LTD

Paul H. Helland, 1107 Technology Parkway, Cedar Falls, Iowa 50613-6951, (319)-266-0161

UNITED STATES PUBLIC LAND SURVEY CORNER CERTIFICATE
OFLAND SURVEY MONUMENTS SITUATED IN SECTION NO. 15, TOWNSHIP NO. 90 NORTH, RANGE
NO. 13 WEST OF THE FIFTH PRINCIPAL MERIDIAN, BLACK HAWK COUNTY, IOWA.

PREVIOUSLY RECORDED IN BOOK _____, PAGE _____.

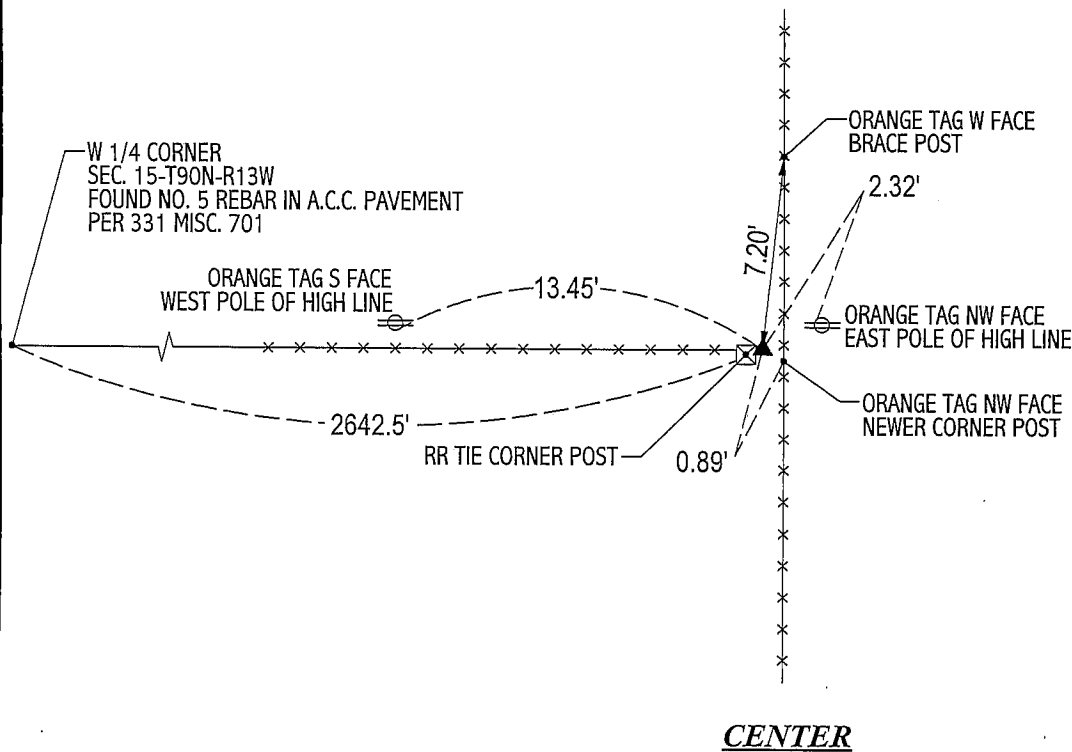
(SHOW REASON FOR PREPARING THIS CERTIFICATE, THE EVIDENCE AND DETAILED PROCEDURES USED IN ESTABLISHING THE
CORNER POSITIONS AND MONUMENTATION FOUND OR PLACED.)

MONUMENT DESCRIPTION AND REMARKS:

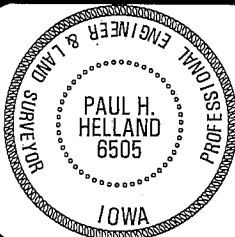
NO CORNER CERTIFICATE ON FILE. SURVEY DONE IN SW 1/4 OF SEC. 15-T90N-R13W.

CENTER: NO COUNTY ENGINEER TIES EXIST. A STONE WAS LOCATED ON 4/17&19/1866 PER AUDITOR'S SURVEY BY JOHN BALL. SIZE OR
COMPOSITION OF STONE NOT STATED. AT CENTER POST FOUND SEVERAL GRANITE STONES AROUND CORNER. NO LIMESTONE OR DISTINCT
GRANITE STONE FOUND. EXCAVATED AROUND VERY OLD RR TIE CORNER POST (3'Ø x 3' DEEP). SET NO. 4 REBAR W/ORANGE CAP #6505
JUST EAST OF SAID RR TIE CORNER POST.

PLAN VIEW

(SHOW A MINIMUM OF THREE REFERENCE TIES TO DURABLE PHYSICAL OBJECTS, RELEVANT MONUMENTS AND PHYSICAL
CONDITIONS THAT WILL ENABLE RECOVERY OF THE CORNER.)HELLAND ENGINEERING & SURVEYING, LTD.
1107 Technology Parkway
Cedar Falls, Iowa 50613-6951
(319)-266-0161

FILE NAME: 02-192CC.DRG

I hereby certify that this land surveying document was prepared
and the related survey work was performed by me or under my
direct personal supervision and that I am a duly licensed Land
Surveyor under the laws of the State of Iowa.*Paul H. Helland 6/5/02*
Paul H. Helland
License Number 6505
My license renewal date is December 31, 2003.
All pages or sheets are covered by this seal except:LIST CORNERS TO BE INDEXED
CORNER SECTION TOWNSHIP RANGE
CENTER 15 90N 13W