

RECEIVED - BLACK HAWK CO. ENGINEERS

SC
MISC
INDEX
MARGIN
PROOF
COMPARE

BLACK HAWK COUNTY IOWA:SS
FILED FOR RECORD APR 2, 1999 AT
4:00 P. M. AND RECORDED IN BOOK 333
OF MISC PAGE 926
Catherine S. Jess RECORDER
FEE N/C
BLACK HAWK COUNTY ENGINEERS OFFICE

23202

PREPARED BY: BLACK HAWK COUNTY ENGINEERS OFFICE
316 E. FIFTH STREET, ROOM 211 WATERLOO, IOWA 50703

PH.# (319) 833-3008
FAX# (319) 833-3139
SLS 9-94
CERT 12-96

UNITED STATES PUBLIC LAND SURVEY CORNER CERTIFICATE OF
Land Survey Monuments situated in Section 14, Township 90 N,
Range 13 W, of the Fifth Principal Meridian, BLACK HAWK County, Iowa.
Previously recorded in Misc. Book 326, Page 484, in County Recorder's Office.

(Show reason for preparing this certificate, the evidence and detailed procedures used in establishing the corner positions and monumentation found or placed.)

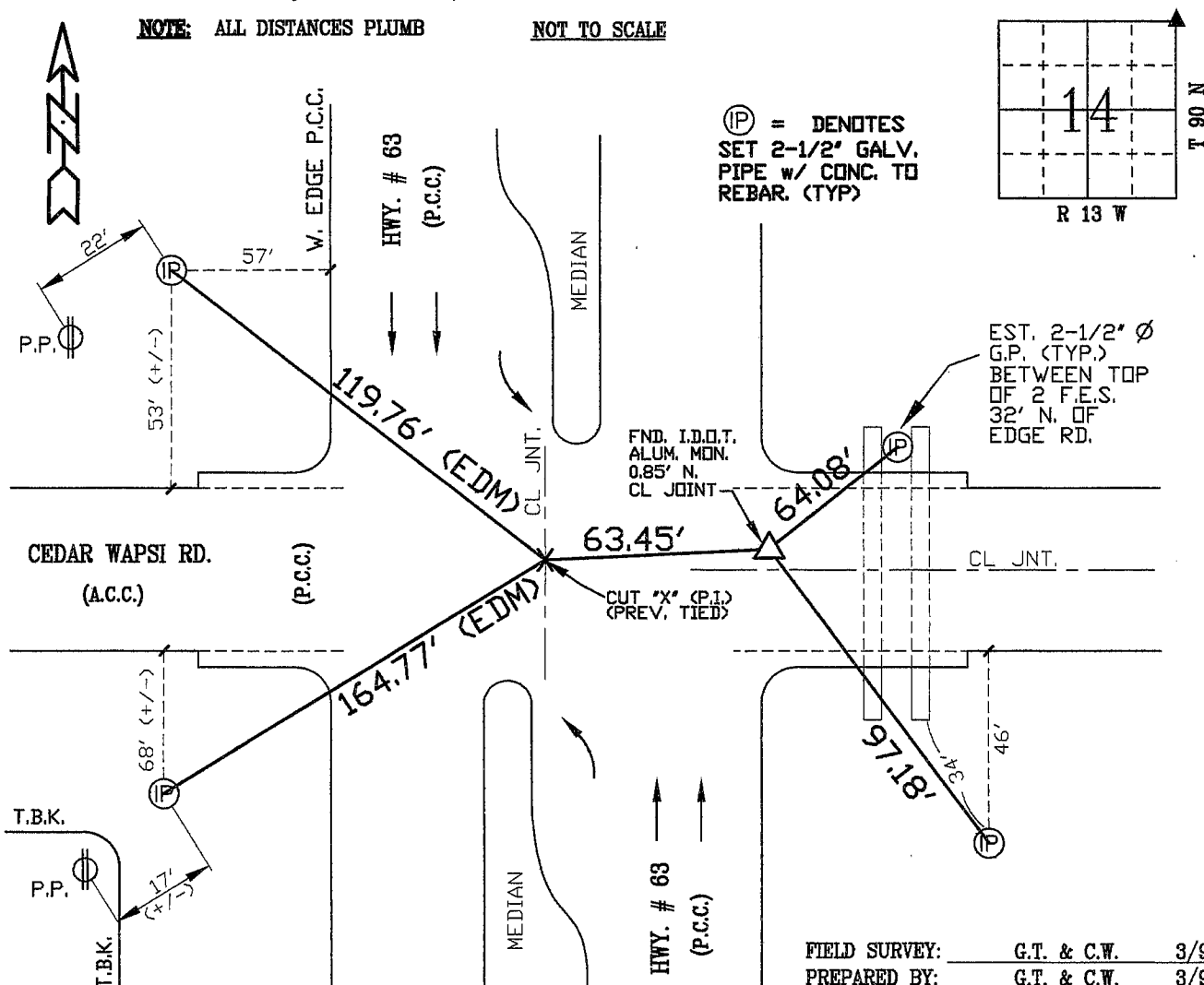
Monument Description and Remarks: FOUND I.D.D.T. ALUM. MONUMENT LOC.
63.45' E. OF CUT 'X' (P.I. @ CENTERLINE P.C.C. JNT. IN MEDIAN/INTERSECTION
WITH HWY. # 63). CUT 'X' (P.I.) WAS INCORRECTLY RECORDED AS CORNER,
AS DENOTED ABOVE. ORIGINAL RESEARCH FROM I.D.D.T. RECORDS WAS NOT
CONDUCTED WITH CORNER BEING IMPROPERLY REFERENCED FROM COUNTY A.C.C.
RESURFACING PLANS. UPDATED FROM I.D.D.T. GEOM. PLANS FOR 1999 MAPPING.

PLAN - VIEW

(Show a minimum of three reference ties to durable physical objects, relevant monuments and physical conditions that will enable recovery of the corner.)

NOTE: ALL DISTANCES PLUMB

NOT TO SCALE



CERTIFICATION

I hereby certify that this land surveying document was prepared and the related survey work was performed by me or under my direct personal supervision and that I am a duly licensed Land Surveyor under the laws of the State of Iowa.

Richard L. King 4/99
Richard L. King
License Number 3890

My license renewal date is December 31, 1999

Pages or sheets covered by this seal:

This Land Corner Certificate Only.

LIST CORNERS TO BE INDEXED

Corner	Section	Township	Range
N.E. COR.	14	90 N	13 W