

MISC SC ✓
INDEX
MARGIN
PROOF
COMPARE

BLACK HAWK COUNTY IOWA:SS
Filed for record JUL 31, 1997
at 12:30 PM, and recorded in Book 326
of MISC Page 484
Patricia J. Sass
Recorder
Fee N/C
BLACK HAWK COUNTY ENGINEER

2048

County Assessor

PREPARED BY: BLACK HAWK COUNTY ENGINEERS OFFICE
316 E. FIFTH STREET, ROOM 211 WATERLOO, IOWA 50703

PH# (319) 291-2419
FAX# (319) 291-2461

SLSI 9-94
CERT 12-96

UNITED STATES PUBLIC LAND SURVEY CORNER CERTIFICATE OF
Land Survey Monuments situated in Section 14, Township 90 N,
Range 13 W, of the Fifth Principal Meridian, BLACK HAWK County, Iowa.
Previously recorded in Book N/A, Page N/A, in County Recorder's Office.

(Show reason for preparing this certificate, the evidence and detailed procedures used in establishing the corner positions and monumentation found or placed.)

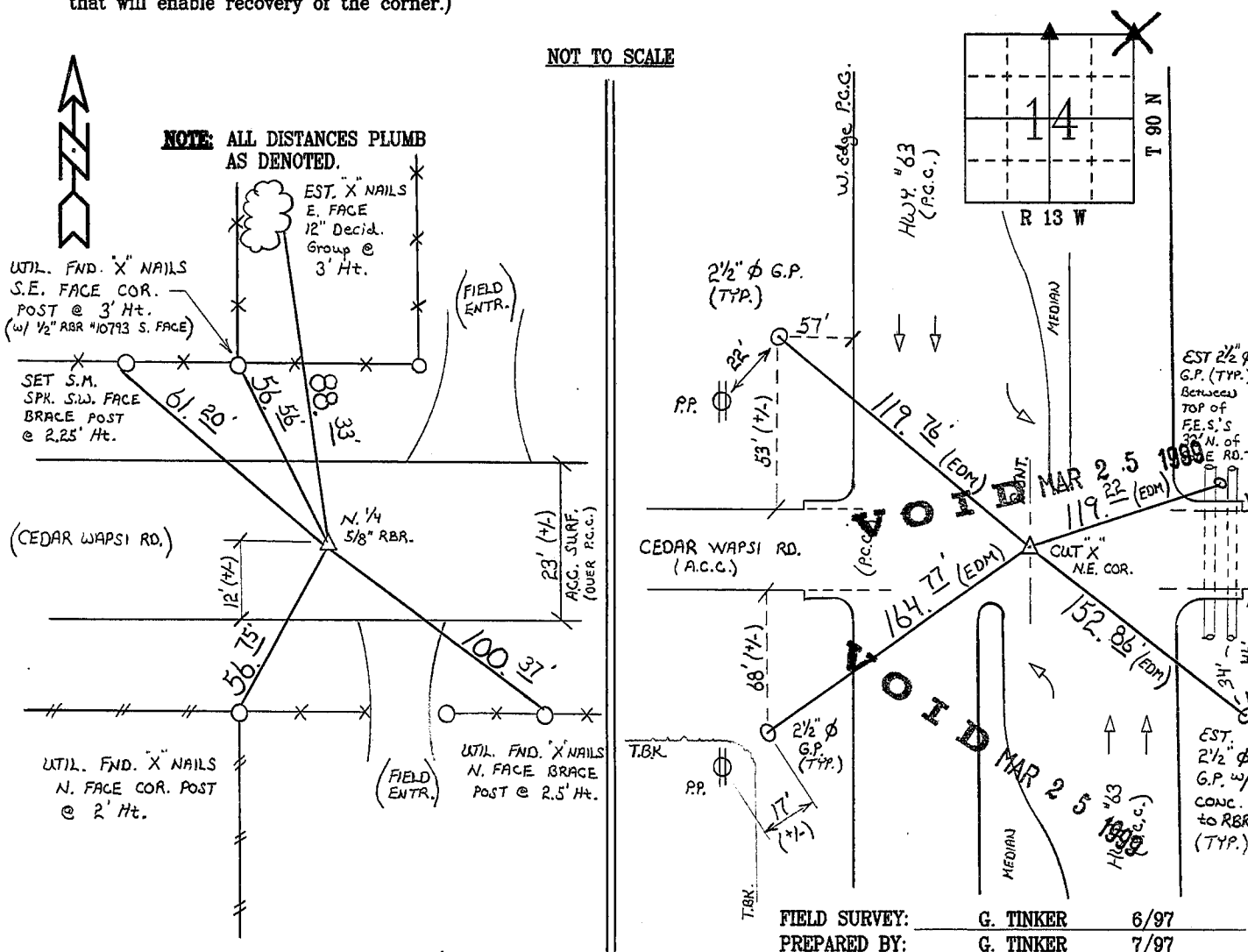
Monument Description and Remarks:

'N. 1/4' FND. RESET 5/8" REBAR FLUSH W/ A.C.C. SURF. @ 12.0' N. OF SOUTH
EDGE ROAD, CREST OF V.C. ALIGNED BETWEEN FENCELINES TO NORTH.
MONUMENT RE-EST, 1995 RESURFACING PROJECT.
'N.E. CORNER' FND. AND UTIL. CUT 'X' CENTERLINE P.C.C. JNT. IN MEDIAN
AT INTERSECTION WITH HWY. # 63, AS DENOTED.

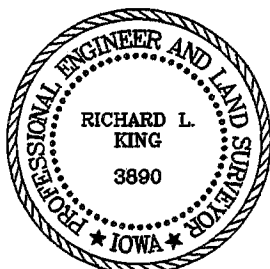
PLAN - VIEW

(Show a minimum of three reference ties to durable physical objects, relevant monuments and physical conditions that will enable recovery of the corner.)

NOT TO SCALE



CERTIFICATION



I hereby certify that this land surveying document was prepared and the related survey work was performed by me or under my direct personal supervision and that I am a duly licensed Land Surveyor under the laws of the State of Iowa.

Richard L. King 7/25/97
Richard L. King (date)

License Number 3890

My license renewal date is December 31, 1997

Pages or sheets covered by this seal:

This Land Corner Certificate Only.

LIST CORNERS TO BE INDEXED

Corner	Section	Township	Range
N. 1/4	14	90 N	13 W
N.E. COR.	14	90 N	13 W

VOID MAR 25 1999

Sheff Tinker, B.H.CO.