

PROOF FILED FOR RECORD NOV 12 2002 AT 4:00P. M. FEE 1-5.00X

COMPARED

*Patricia A. Deas*

BLACK HAWK COUNTY RECORDER

PAUL HELLAND

Paul H. Helland, 1107 Technology Parkway, Cedar Falls, Iowa 50613-6951, (319)-266-0161

UNITED STATES PUBLIC LAND SURVEY CORNER CERTIFICATE  
OF

LAND SURVEY MONUMENTS SITUATED IN SECTION NO. 14, TOWNSHIP NO. 90 NORTH, RANGE NO. 13 WEST OF THE FIFTH PRINCIPAL MERIDIAN, BLACK HAWK COUNTY, IOWA.

PREVIOUSLY RECORDED IN BOOK \_\_\_\_\_, PAGE \_\_\_\_\_.

(SHOW REASON FOR PREPARING THIS CERTIFICATE, THE EVIDENCE AND DETAILED PROCEDURES USED IN ESTABLISHING THE CORNER POSITIONS AND MONUMENTATION FOUND OR PLACED.)

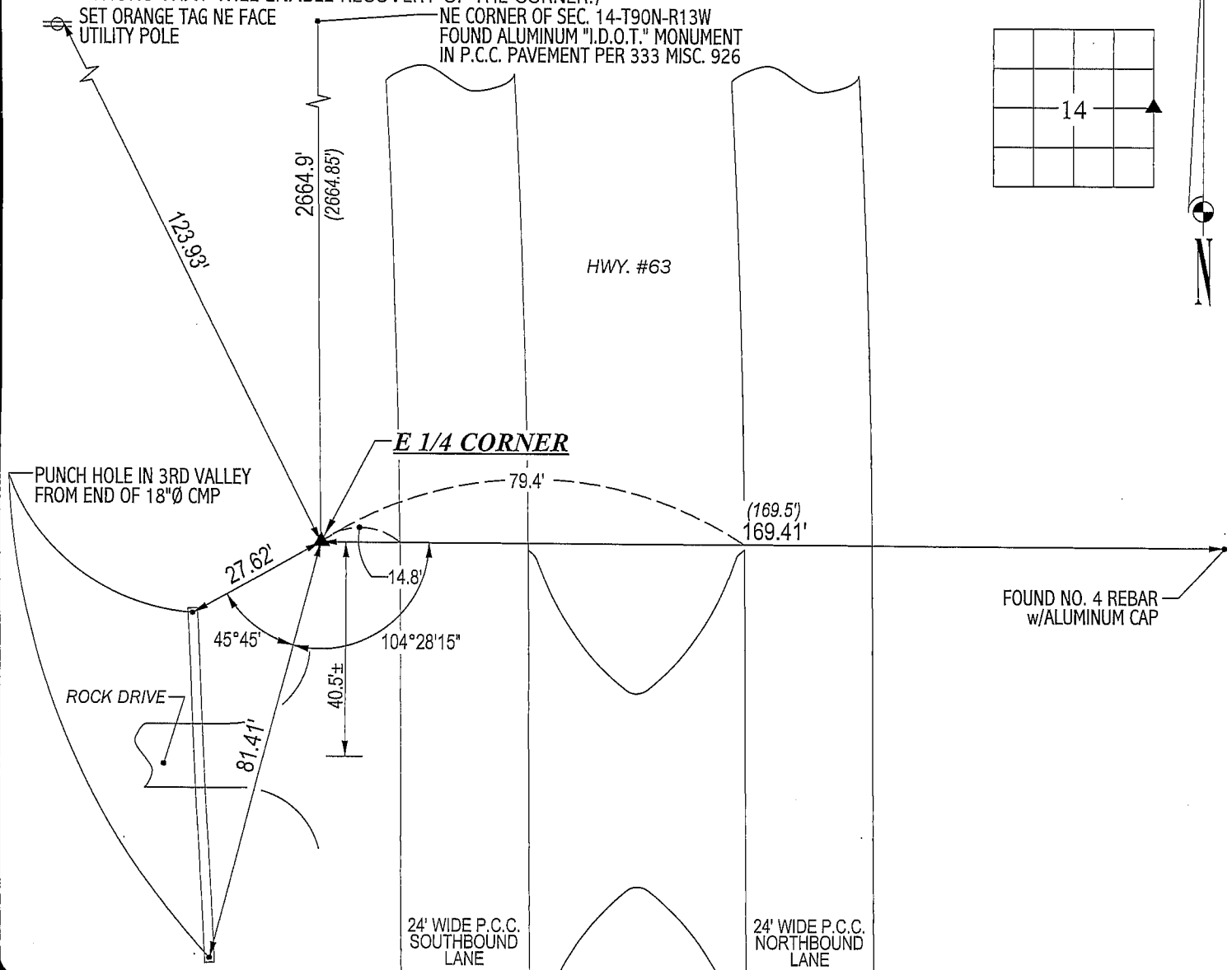
## MONUMENT DESCRIPTION AND REMARKS:

NO CORNER CERTIFICATE ON FILE. SURVEY DONE IN NW 1/4 OF SEC. 13-T90N-R13W.

→ E 1/4 CORNER: ALL COUNTY & STATE REFERENCE TIES ARE LOST. FOUND NO. 5 REBAR w/ALUMINUM CAP 0.8' DEEP.  
NO. 5 REBAR CORRESPONDS TO "I.D.O.T." LAND CORNER SURVEY BY ROBERT BURNS DATED 2/23/1981.  
CORNER IS 12.5'± NORTH OF STA. "299" IMPRINTED IN P.C.C. ON WEST SIDE OF SOUTHBOUND LANE OF U.S. #63.

## PLAN VIEW

(SHOW A MINIMUM OF THREE REFERENCE TIES TO DURABLE PHYSICAL OBJECTS, RELEVANT MONUMENTS AND PHYSICAL CONDITIONS THAT WILL ENABLE RECOVERY OF THE CORNER.)



HELLAND ENGINEERING & SURVEYING, LTD.  
1107 Technology Parkway  
Cedar Falls, Iowa 50613-6951  
(319)-266-0161

(00.00') - RECORDED AS

FILE NAME: 02-323C1.DRG



I hereby certify that this land surveying document was prepared and the related survey work was performed by me or under my direct personal supervision and that I am a duly licensed Land Surveyor under the laws of the State of Iowa.

*Paul H. Helland 11/15/02*  
Paul H. Helland  
License Number 6505  
My license renewal date is December 31, 2003.  
All pages or sheets are covered by this seal except:

LIST CORNERS TO BE INDEXED  
CORNER SECTION TOWNSHIP RANGE  
E 1/4 CORNER 14 90N 13W

*Rice*