

INDEX

BLACK HAWK COUNTY, IOWA:ss

FEE BOOK # 20

06 7400

PROOF

FILED FOR RECORD SEP 16, 2005, AT 1:00 P.M. FEE N/C

COMPARED

*Richard L. King*

BLACK HAWK COUNTY RECORDER

BLACK HAWK COUNTY ENGINEER

PREPARED BY:

BLACK HAWK COUNTY ENGINEERS OFFICE  
316 E. FIFTH STREET, ROOM 211 WATERLOO, IOWA 50703PH.# (319) 833-3008  
FAX.# (319) 833-3139SLSI 9-94  
CERT 12-96

UNITED STATES PUBLIC LAND SURVEY CORNER CERTIFICATE OF  
Land Survey Monuments situated in Section 13, Township 90 N,  
Range 13 W, of the Fifth Principal Meridian, BLACK HAWK County, Iowa.  
Previously recorded in Misc. Book n/a, Page n/a, in County Recorder's Office.

(Show reason for preparing this certificate, the evidence and detailed procedures used in establishing the corner positions and monumentation found or placed.)

Monument Description and Remarks: FOUND 5/8" REBAR PRIOR TO RE-SURF.  
EXIST. 3" ACC MILLED, AND PCC BASE RUBBELIZED w/ NEW 7" ACC MAT.  
CORNER TEMP. REFERENCED, AND RESET w/ #5 REBAR LOCATED 1.15' S. OF  
C.L. ACC JOINT E./W. AND ALIGNED WITH CENTER OF GRAVEL RD. N./S.  
CORNER ANGLE DENOTED PER RTK GPS MEASURE.  
CORNER UPDATED FOR PUBLIC REFERENCE.

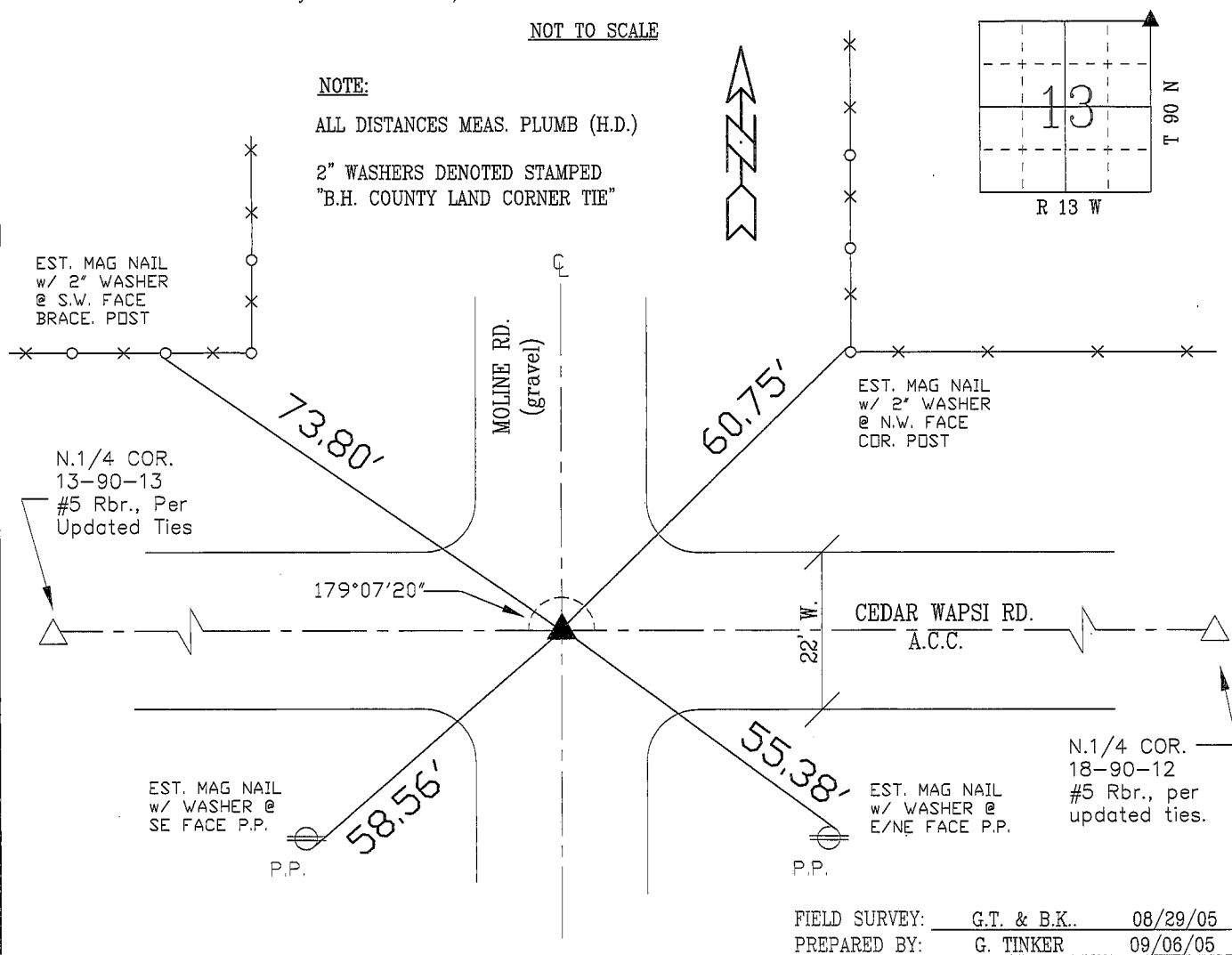
## PLAN - VIEW

(Show a minimum of three reference ties to durable physical objects, relevant monuments and physical conditions that will enable recovery of the corner.)

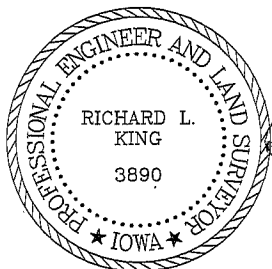
NOT TO SCALE

## NOTE:

ALL DISTANCES MEAS. PLUMB (H.D.)

2" WASHERS DENOTED STAMPED  
"B.H. COUNTY LAND CORNER TIE"

## CERTIFICATION



I hereby certify that this land surveying document was prepared and the related survey work was performed by me or under my direct personal supervision and that I am a duly licensed Land Surveyor under the laws of the State of Iowa.

*Richard L. King* (signature)  
Richard L. King (date)  
License Number 3890

My license renewal date is December 31, 2005

Pages or sheets covered by this seal:

This Land Corner Certificate Only.

## LIST CORNERS TO BE INDEXED

Corner	Section	Township	Range
N.E. COR.	13	90 N	13 W
N.W. COR.	18	90 N	12 W
S.E. COR.	12	90 N	13 W
S.W. COR.	7	90 N	12 W