

PROOF FILED FOR RECORD NOV 12, 2002, AT 4:00P. M. FEE 1-5.00X.

COMPARED

Patricia A. Jess

BLACK HAWK COUNTY RECORDER

PAUL HELLAND

Paul H. Helland, 1107 Technology Parkway, Cedar Falls, Iowa 50613-6951, (319)-266-0161

UNITED STATES PUBLIC LAND SURVEY CORNER CERTIFICATE
OFLAND SURVEY MONUMENTS SITUATED IN SECTION NO. 13, TOWNSHIP NO. 90 NORTH, RANGE
NO. 13 WEST OF THE FIFTH PRINCIPAL MERIDIAN, BLACK HAWK COUNTY, IOWA.

PREVIOUSLY RECORDED IN BOOK _____, PAGE _____.

(SHOW REASON FOR PREPARING THIS CERTIFICATE, THE EVIDENCE AND DETAILED PROCEDURES USED IN ESTABLISHING THE
CORNER POSITIONS AND MONUMENTATION FOUND OR PLACED.)

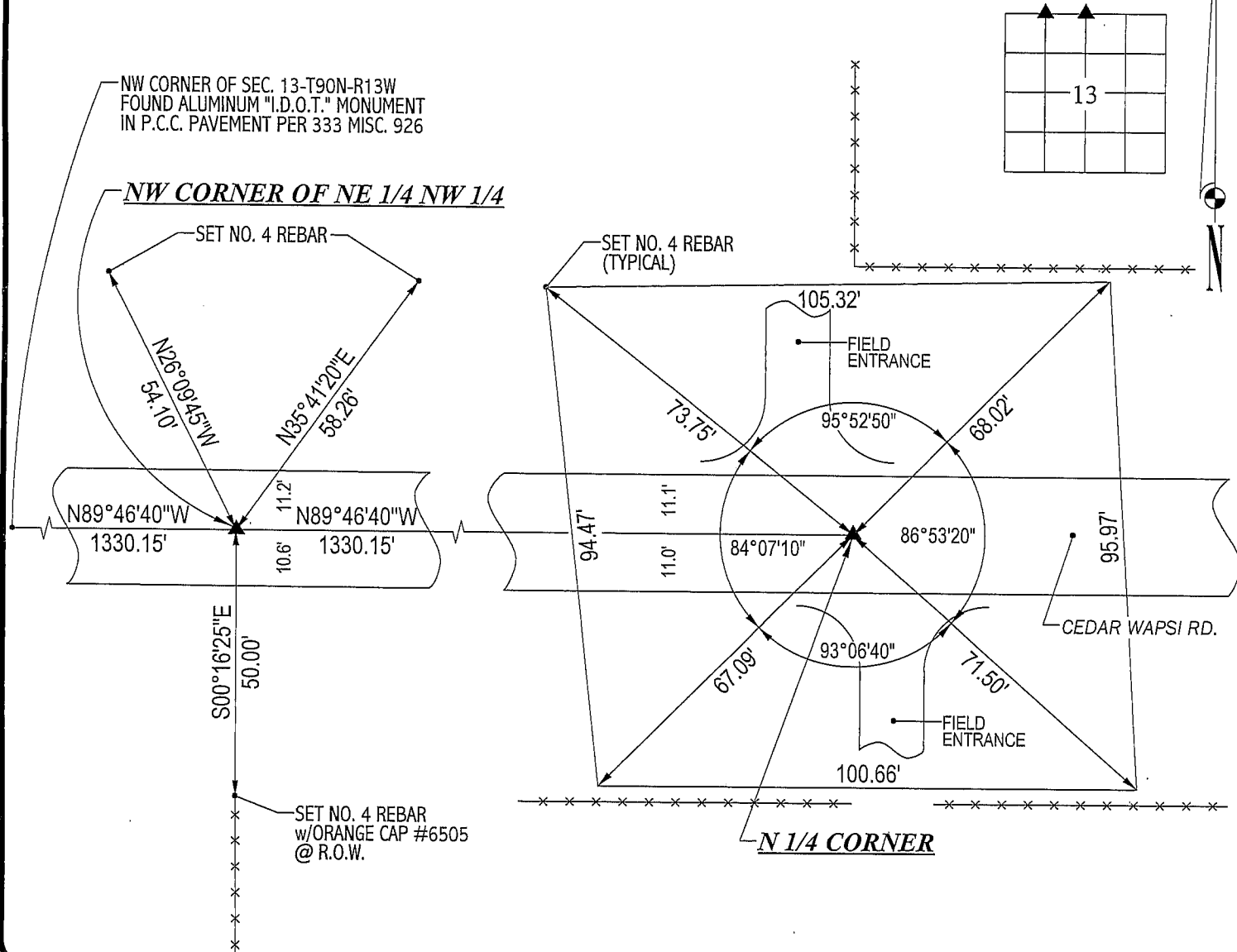
MONUMENT DESCRIPTION AND REMARKS:

NO CORNER CERTIFICATE ON FILE. SURVEY DONE IN NW 1/4 OF SEC. 13-T90N-R13W.

→ N 1/4 CORNER: FOUND NO. 5 REBAR IN A.C.C. PAVEMENT PER STATE REFERENCE TIES. W.P.A. CHAINING NOTES DATED 8/11/1938
STATES DISTANCE BETWEEN NW CORNER & N 1/4 CORNER OF SEC. 13 IS 2659.8', DISTANCE PER "I.D.O.T." LAND CORNER SURVEY DATED
2/23/1981 IS 2659.40'.

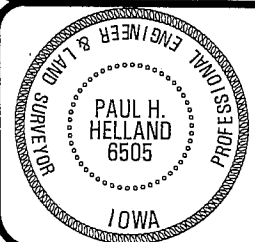
→ NW CORNER OF NE 1/4 NW 1/4: SET "MAG" NAIL IN A.C.C. PAVEMENT @ MIDPOINT OF NORTH LINE OF NW 1/4.

PLAN VIEW

(SHOW A MINIMUM OF THREE REFERENCE TIES TO DURABLE PHYSICAL OBJECTS, RELEVANT MONUMENTS AND PHYSICAL
CONDITIONS THAT WILL ENABLE RECOVERY OF THE CORNER.)HELLAND ENGINEERING & SURVEYING, LTD.
1107 Technology Parkway
Cedar Falls, Iowa 50613-6951
(319)-266-0161

(00.00) - RECORDED AS

FILE NAME: 02-323C2.DRG

I hereby certify that this land surveying document was prepared
and the related survey work was performed by me or under my
direct personal supervision and that I am a duly licensed Land
Surveyor under the laws of the State of Iowa.

Paul H. Helland

License Number 6505

My license renewal date is December 31, 2003.

All pages or sheets are covered by this seal except:

LIST CORNERS TO BE INDEXED

CORNER	SECTION	TOWNSHIP	RANGE
N 1/4 CORNER	13	90N	13W
NW CORNER NE 1/4 NW 1/4	13	90N	13W

Rec