

PAUL HELLAND

Paul H. Helland, 1107 Technology Parkway, Cedar Falls, Iowa 50613-6951, (319)-266-0161

UNITED STATES PUBLIC LAND SURVEY CORNER CERTIFICATE
OF

LAND SURVEY MONUMENTS SITUATED IN SECTION NO. 13, TOWNSHIP NO. 90 NORTH, RANGE
NO. 13 WEST OF THE FIFTH PRINCIPAL MERIDIAN, BLACK HAWK COUNTY, IOWA.

PREVIOUSLY RECORDED IN BOOK _____, PAGE _____.

(SHOW REASON FOR PREPARING THIS CERTIFICATE, THE EVIDENCE AND DETAILED PROCEDURES USED IN ESTABLISHING THE
CORNER POSITIONS AND MONUMENTATION FOUND OR PLACED.)

MONUMENT DESCRIPTION AND REMARKS:

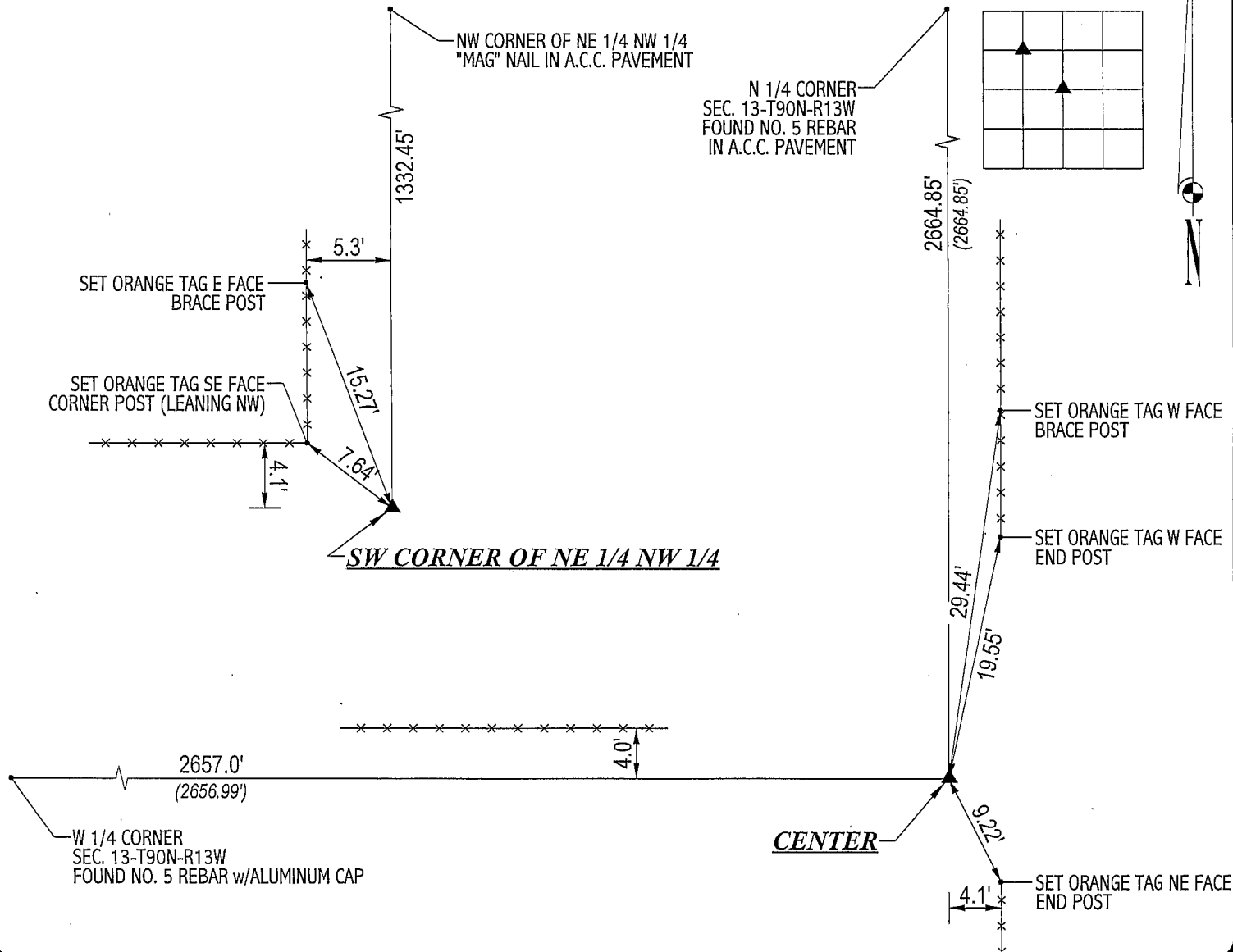
NO CORNER CERTIFICATE ON FILE. SURVEY DONE IN NW 1/4 OF SEC. 13-T90N-R13W.

→ CENTER: A STONE WAS SET ON 6/2/1872 PER AUDITOR'S SURVEY BK 1 PG 563. "I.D.O.T." LAND CORNER SURVEY DATED 2/23/1981
DID NOT FIND SAID STONE. RETRACED SAID "I.D.O.T." LAND CORNER SURVEY DATED 2/23/1981 AND EXCAVATED @ CENTER LOCATION.
EXCAVATED 4'² AREA AND PROBED, ALSO EXCAVATED & PROBED @ FENCE INTERSECTION. NO STONE FOUND. SET NO. 4 REBAR w/ORANGE
CAP #6505 PER SAID "I.D.O.T." LAND CORNER SURVEY DATED 2/23/1981.

→ SW CORNER OF NE 1/4 NW 1/4: SET NO. 4 REBAR w/ORANGE CAP #6505 @ CENTER OF NW 1/4 OF SEC. 13-T90N-R13W.
REFER TO PLAT OF SURVEY BY HES FOR DETAILS.

PLAN VIEW

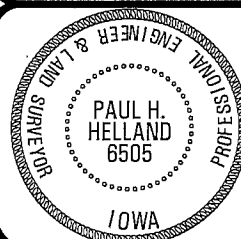
(SHOW A MINIMUM OF THREE REFERENCE TIES TO DURABLE PHYSICAL OBJECTS, RELEVANT MONUMENTS AND PHYSICAL
CONDITIONS THAT WILL ENABLE RECOVERY OF THE CORNER.)



HELLAND ENGINEERING & SURVEYING, LTD.
1107 Technology Parkway
Cedar Falls, Iowa 50613-6951
(319)-266-0161

(00.00') - RECORDED AS

FILE NAME: 02-323C3.DRG



I hereby certify that this land surveying document was prepared
and the related survey work was performed by me or under my
direct personal supervision and that I am a duly licensed Land
Surveyor under the laws of the State of Iowa.

Paul H. Helland
Paul H. Helland
License Number 6505
My license renewal date is December 31, 2003.
All pages or sheets are covered by this seal except:

LIST CORNERS TO BE INDEXED

CORNER	SECTION	TOWNSHIP	RANGE
CENTER	13	90N	13W
SW CORNER NE 1/4 NW 1/4	13	90N	13W

Roc