

Reserved for County Recorder's use.



Doc ID: 011974550001 Type: GEN
Recorded: 07/13/2023 at 11:40:59 AM
Fee Amt: \$7.00 Page 1 of 1
Black Hawk County Iowa
SANDIE L. SMITH RECORDER

File 2024-00000504

Jeffrey P. Helland, 6109 Chancellor Drive, Cedar Falls, Iowa 50613-6916, (319)-266-0161

UNITED STATES PUBLIC LAND SURVEY CORNER CERTIFICATE
OF

LAND SURVEY MONUMENTS SITUATED IN SECTION NO. 12, TOWNSHIP NO. 90 NORTH, RANGE
NO. 13 WEST OF THE FIFTH PRINCIPAL MERIDIAN, BLACK HAWK COUNTY, IOWA.
PREVIOUSLY RECORDED IN #2012-00016688

(SHOW REASON FOR PREPARING THIS CERTIFICATE, THE EVIDENCE AND DETAILED PROCEDURES USED IN ESTABLISHING THE
CORNER POSITIONS AND MONUMENTATION FOUND OR PLACED.)

MONUMENT DESCRIPTION AND REMARKS:

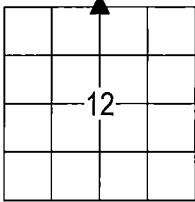
THE THREE REFERENCE TIES PER USPLSCC #2012-00016688 DO NOT INTERSECT. SURVEY COMPLETED IN THE SW 1/4
OF SEC. 1-T90N-R13W.

N 1/4 CORNER: SURVEY BY JOHN BALL DATED 05/1884 CALLS FOR [STONE & STAKE.] WPA NOTES DATED 08/11/1938
CALLS FOR [FOUND *****HEAD 8 1/2" x 13" AND IRON BAR 1/2" x 25 1/2". LOWERED EVIDENCE AND SET C.M. ON TOP 12"
BELOW GROUND.] CORNER STONE SURVEY BY IOWA DOT HIGHWAY DIVISION DATED 02/23/1981 CALLS FOR [FOUND
CONC. MON. 6" DEEP.] PLAT OF SURVEY #2005 09949 DATED 09/27/2004 CALLS FOR [FOUND REBAR w/OUT CAP].
USPLSCC #2012-00016688 DATED 03/09/2012 CALLS FOR [FD. CONCRETE MONUMENT WITH INFORMATION OBTAINED ON A
SURVEY AND PLAT MADE BY TERRY D. VAN LANINGHAM, RECORDED OCTOBER 19, 2004 AS DOC. #200509949 IN THE
BLACK HAWK COUNTY RECORDER'S OFFICE.] STARTED EXCAVATION, FOUND NO. 4 REBAR 0.1± DEEP, CONTINUED
EXCAVATION AND FOUND 0.4'x0.4' (TOP VIEW) BROKEN OFF CONCRETE MONUMENT 0.6± DEEP, CUT "X" IN TOP CENTER
OF CONCRETE MONUMENT AND UTILIZED AS THE CORNER, LOWERED REBAR TO TOP OF MONUMENT, NO. 4 REBAR IS
0.27' NE OF CUT "X" ON CONCRETE MONUMENT.

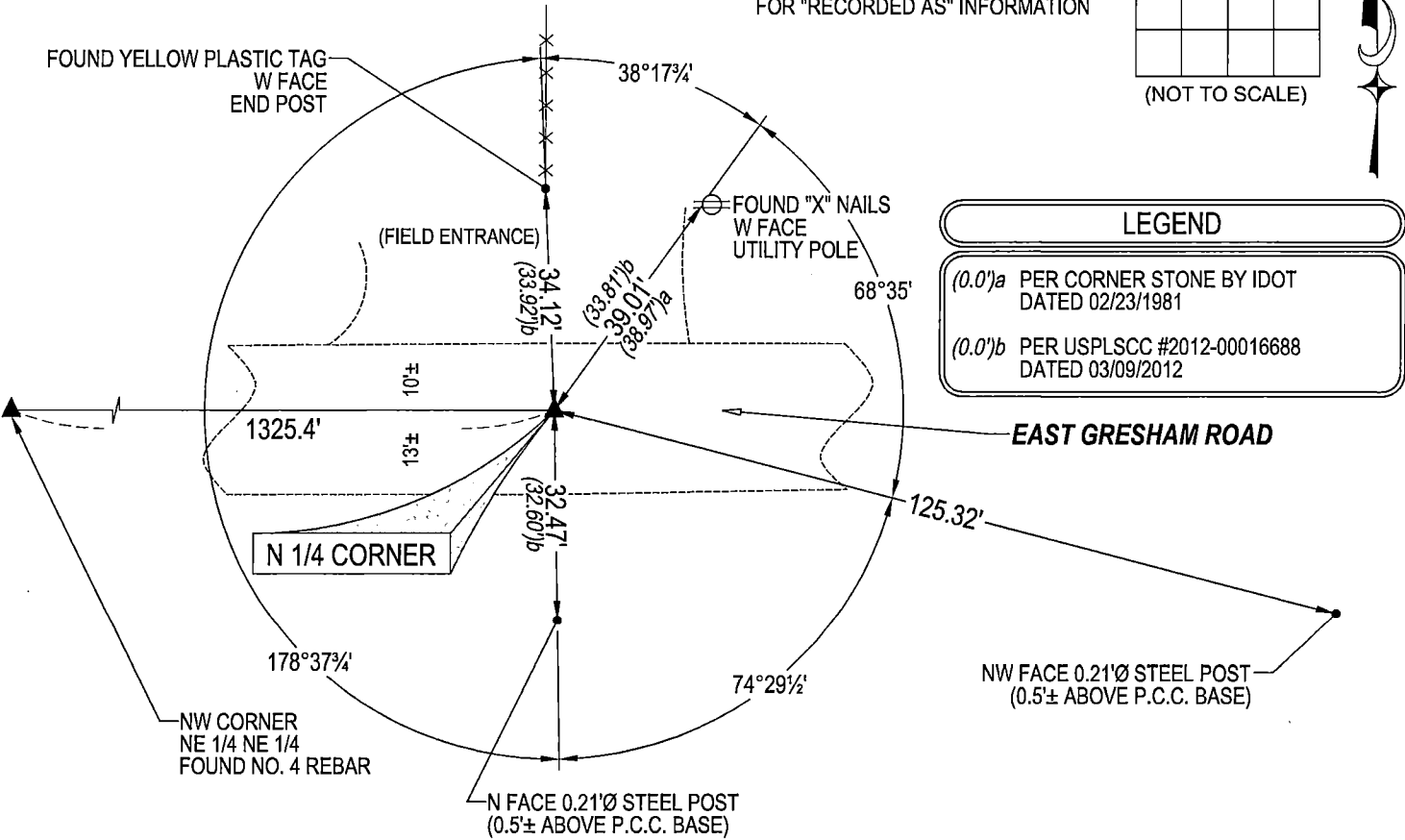
(SHOW A MINIMUM OF THREE REFERENCE TIES TO DURABLE PHYSICAL OBJECTS, RELEVANT MONUMENTS AND PHYSICAL
CONDITIONS THAT WILL ENABLE RECOVERY OF THE CORNER.)

PLAN VIEW

SEE ASSOCIATED PLAT OF SURVEY
FOR "RECORDED AS" INFORMATION



(NOT TO SCALE)



(BEARINGS ARE ASSUMED)



HELLAND ENGINEERING & SURVEYING, LTD.
6109 Chancellor Drive
Cedar Falls, Iowa 50613-6916
(319)-266-0161

SHINER = 4d. NAIL & 1 5/16"Ø METAL SHINER DRAWN BY: JPH
BRASS TAG = 4d. NAIL & 13/16"Ø BRASS TAG
OPC = PLASTIC CAP (O=ORANGE, R=RED, Y=YELLOW)
(00') RECORDED AS FILE NAME: 23-164-24.DWG



I hereby certify that this land surveying document was prepared
and the related survey work was performed by me or under my
direct personal supervision, and that I am a duly licensed
Professional Land Surveyor under the laws of the State of Iowa.
Jeffrey P. Helland 6/30/2023
Jeffrey P. Helland
License Number 16264
My license renewal date is December 31, 2023.
All pages or sheets are covered by this seal except:

LIST CORNERS TO BE INDEXED			
CORNER	SECTION / TOWNSHIP / RANGE		
N 1/4 CORNER	12	90N	13W
S 1/4 CORNER	1	90N	13W