

Prepared by & Return to: Herald - Reicks Surveying, 10 East Main Street, New Hampton, IA 50659, Ph. 641-394-2725

UNITED STATES PUBLIC LAND SURVEY CORNER CERTIFICATE

Land Survey Monuments situated in Section 12, Township 90 North, Range 13 West of the Fifth Principal Meridian, Black Hawk County, Iowa. 1.) Previously recorded in Bk. 342, Pg. 420 in the County Recorder's office. 2.) Not previously recorded in the County Recorder's office.

This certificate is being prepared in compliance with Iowa Code Chapter 355.11 because:

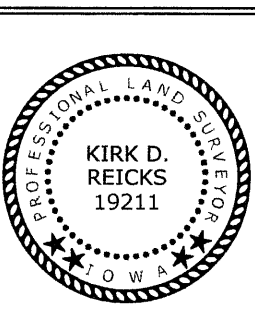
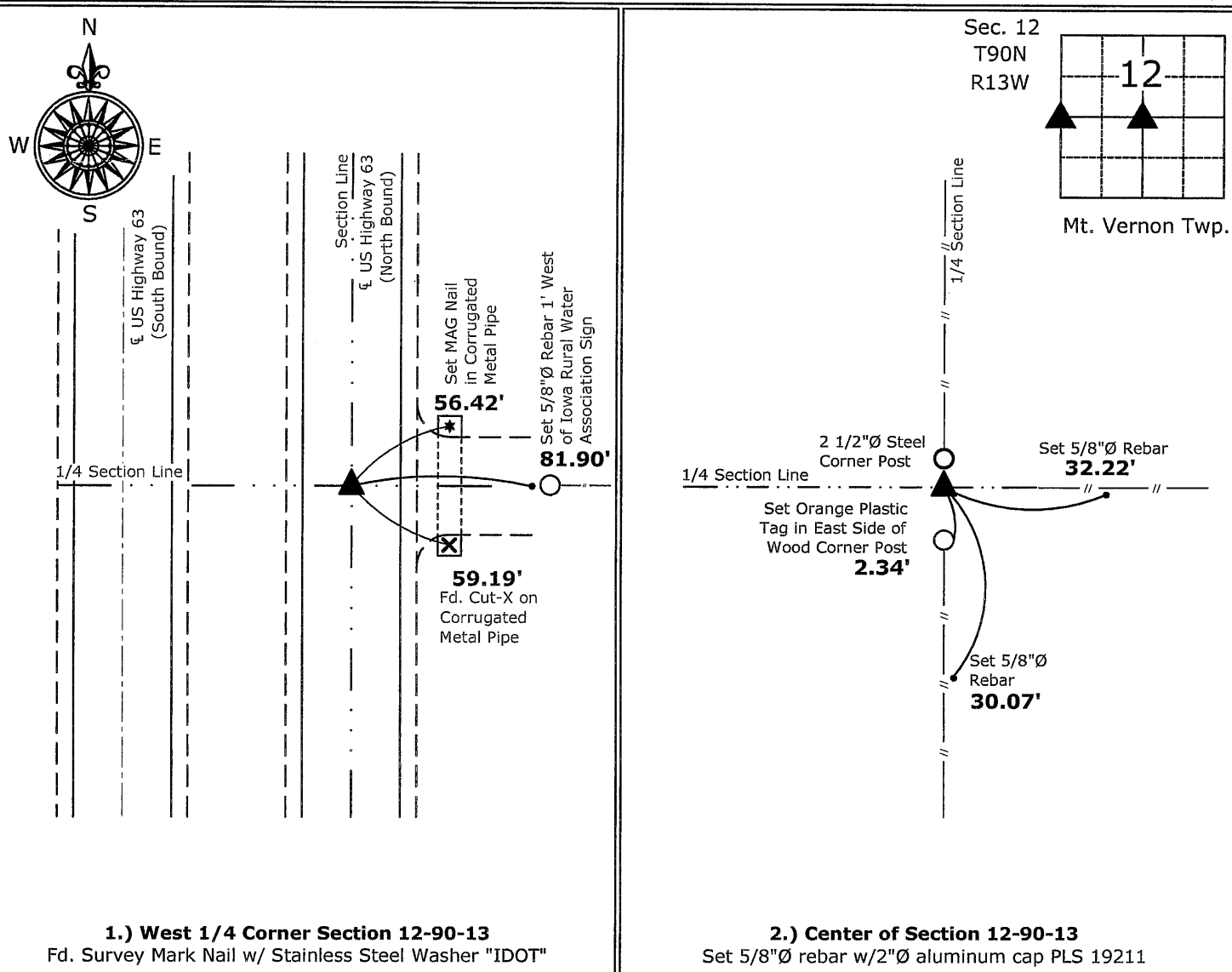
- 2.) ☒ There is no certificate on file for this corner.
1.) ☒ There are no longer three valid ties of record.
☐ There are changes to reference ties of record.
☐ There is change of monumentation of record.
☐ To clarify description of record monument (ties).

Monument Description and Remarks:

- 1.) West 1/4 Corner: Fd. Survey Mark Nail w/ Stainless Steel Washer "IDOT" from previous Section Corner Certificate, 2 ties were missing, set ties to update corner.
2.) Center: Set 5/8"Ø rebar w/2"Ø aluminum cap PLS 19211 at the intersection Quarter Section lines.

PLAN - VIEW

(Show a minimum of three reference ties to durable physical objects, relevant monuments and physical conditions that will enable recovery of the corner.)



I hereby certify that this land surveying document was prepared and the related survey work was performed by me or under my direct personal supervision and that I am a duly licensed Land Surveyor under the laws of the State of Iowa.
Kirk D. Reicks 3-9-12
Kirk D. Reicks Date:
License number 19211
My license renewal date is December 31, 2012.
Sheets covered by this seal: Individual sheet only

List Corners to be Indexed			
Corners	Section	Twp.	Range
W 1/4	12	90	13
CTR	12	90	13
Project Number: 2011-074			
FB: Black Hawk County 1, Pgs. 14, 15			