

\* ENU: WAYNE CLAASSEN ENGINEERING AND SURVEYING, INC.  
P.O. BOX 898 WATERLOO, IOWA 50704-0898

PHONE: (VOICE) 319-235-6294  
(FAX) 319-235-0028

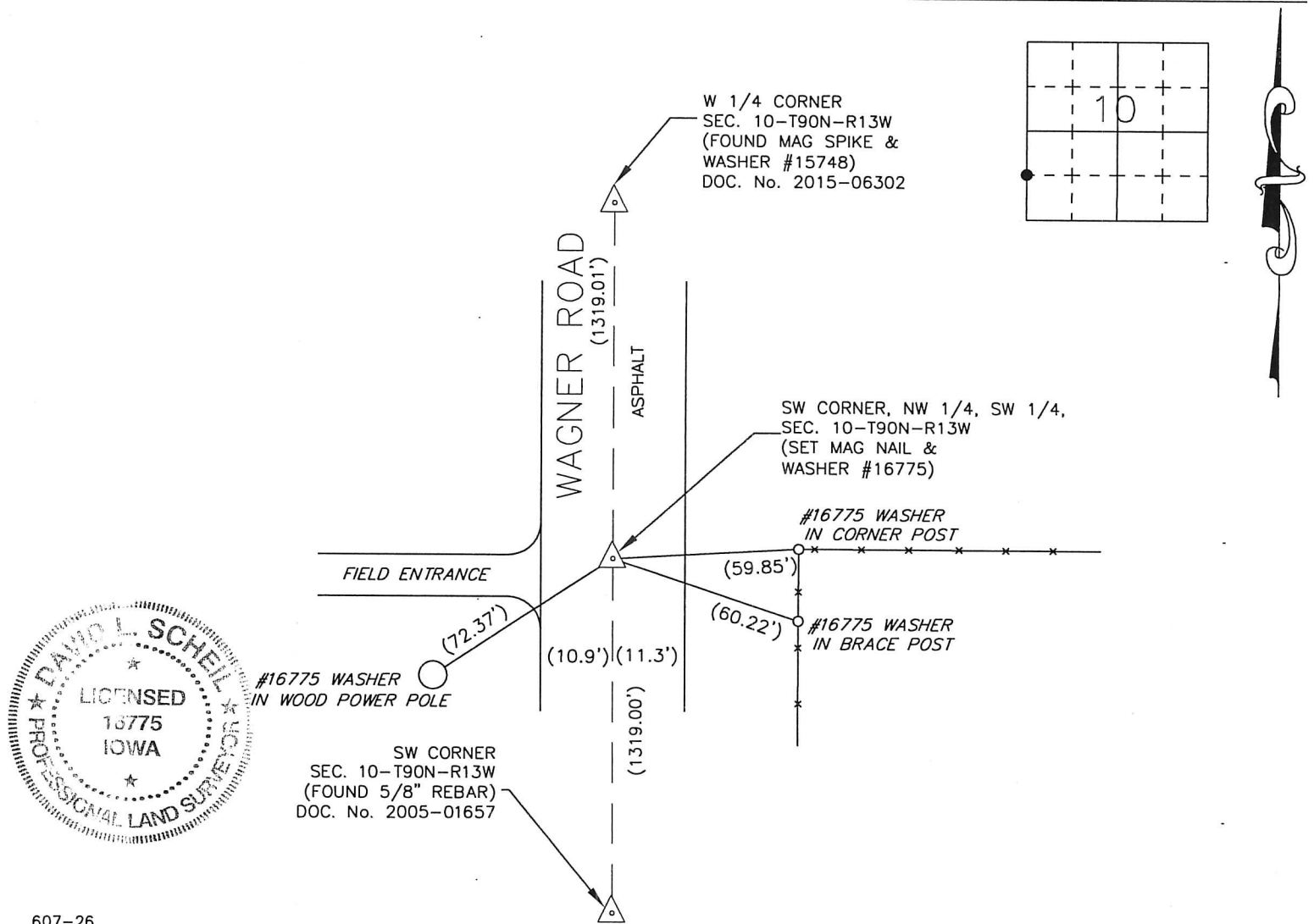
## UNITED STATES PUBLIC LAND SURVEY CORNER CERTIFICATE

Land Survey Monuments situated in Section 10, Township 90 North, Range 13 West, of the Fifth Principal Meridian, Black Hawk County, Iowa.

Previously recorded in \_\_\_\_\_ in County Recorder's Office.  
(book, page, document number, etc.)

### Monument Description and Remarks

Set mag nail and washer #16775 at midpoint between the Southwest corner of section and the W 1/4 corner. This certificate was filed because there is no corner certificate on file at the Black Hawk County Recorder's Office.



607-26

I hereby certify that this land surveying document was prepared and the related survey work was performed by me or under my direct personal supervision and that I am a duly Licensed Land Surveyor under the laws of the State of Iowa.

Signature: David L. Scheil  
David L. Scheil, L.S.

Date: MARCH 27, 2015 Lic. No. 16775

Pages or Sheets Covered by this Seal: THIS SHEET ONLY.

My license renewal date is December 31, 2016

SEAL

### List Corners to be Indexed

Corners	Section	Twp	Range
SW CORNER, NW 1/4, SW 1/4,	10	90 N	13 W
SE CORNER, NE 1/4, SE 1/4,	09	90 N	13 W

( 7.0 )