

Reserved for County Recorder's use.



Doc ID: 011823430001 Type: GEN
Recorded: 08/30/2022 at 09:18:41 AM
Fee Amt: \$7.00 Page 1 of 1
Black Hawk County Iowa
SANDIE L. SMITH RECORDER

File 2023-00003668

Jeffery P. Helland, 6109 Chancellor Drive, Cedar Falls, Iowa 50613-6916, (319)-266-0161

UNITED STATES PUBLIC LAND SURVEY CORNER CERTIFICATE
OF

LAND SURVEY MONUMENTS SITUATED IN SECTION NO. 10, TOWNSHIP NO. 90 NORTH, RANGE
NO. 13 WEST OF THE FIFTH PRINCIPAL MERIDIAN, BLACK HAWK COUNTY, IOWA.
PREVIOUSLY RECORDED IN FILE 2015-00016019

(SHOW REASON FOR PREPARING THIS CERTIFICATE, THE EVIDENCE AND DETAILED PROCEDURES USED IN ESTABLISHING THE
CORNER POSITIONS AND MONUMENTATION FOUND OR PLACED.)

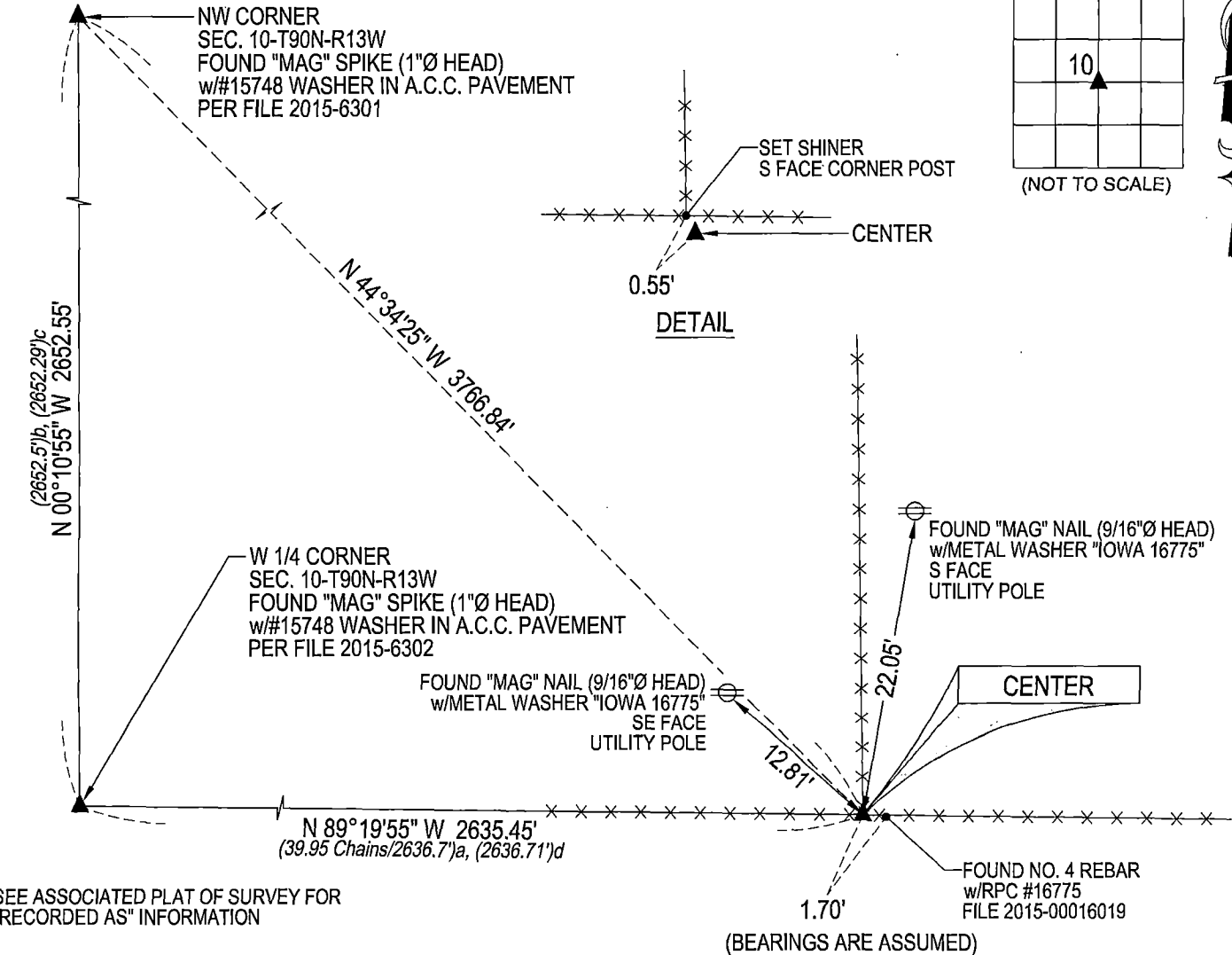
MONUMENT DESCRIPTION AND REMARKS:

A DIFFERENT CORNER POSITION WAS ACCEPTED FROM USPLSCC IN FILE 2015-00016019. SURVEY COMPLETED IN THE
SW 1/4 NW 1/4 OF SEC. 10-T90N-R13W.

CENTER: USPLSCC IN FILE 2015-00016019 DATED 03/27/2015 CALLS FOR [SET 1/2"X24" STEEL REBAR WITH RED CAP
#16775 AT THE INTERSECTION OF OPPOSITE 1/4 CORNERS]. SURVEY BY JOHN BALL DATED 04/17 & 9/1866 CALLS FOR
[STONE]. STARTED PROBING AROUND EXISTING CORNER POST, FOUND FLAT LIMESTONE 0.7'±N-S x 0.8'± E-W (TOP
VIEW) 1.6'± DEEP SET NO. 4 REBAR (2.0' LONG) ABOVE CENTER OF STONE AND UTILIZED AS THE CORNER. FOUND NO. 4
REBAR w/RPC #16775 (USPLSCC IN FILE 2015-00016019) 0.15' S & 1.7' E OF LIMESTONE.

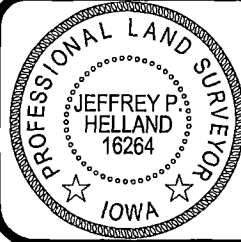
PLAN VIEW

(SHOW A MINIMUM OF THREE REFERENCE TIES TO DURABLE PHYSICAL OBJECTS, RELEVANT MONUMENTS AND PHYSICAL
CONDITIONS THAT WILL ENABLE RECOVERY OF THE CORNER.)



HELLAND ENGINEERING & SURVEYING, LTD.
6109 Chancellor Drive
Cedar Falls, Iowa 50613-6916
(319)-266-0161

SHINER = 4d. NAIL & 1 5/16"Ø METAL SHINER DRAWN BY: JPH
BRASS TAG = 4d. NAIL & 13/16"Ø BRASS TAG
OPC = PLASTIC CAP (O=ORANGE, R=RED, Y=YELLOW)
(00') RECORDED AS FILE NAME: 22-215-29.DWG



I hereby certify that this land surveying document was prepared
and the related survey work was performed by me or under my
direct personal supervision and that I am a duly licensed
Professional Land Surveyor under the laws of the State of Iowa.
Jeffrey P. Helland 8/26/2022
License Number 16264
My license renewal date is December 31, 2023.
All pages or sheets are covered by this seal except:

LIST CORNERS TO BE INDEXED			
CORNER	SECTION	TOWNSHIP	RANGE
CENTER	10	90N	13W