

PROOF FILED FOR RECORD SEP 20, 2004, AT 2:00 P. M. FEE 1-5.00/- 1.00/

COMPARED

*Terry D. Van Laningham*

BLACK HAWK COUNTY RECORDER

TERRY VANLANINGHAM 120 2ND ST SE WAVERLY IA 5067

PREPARED BY TERRY D. VAN LANINGHAM, PLS, INC. \* 120 2ND STREET, SW, \* WAVERLY, IOWA \* (319) 352-0801 \* e-mail = van@forbin.net

UNITED STATES PUBLIC LAND SURVEY CORNER CERTIFICATE  
OF

Land Survey Monuments situated in Section 09, Township T 90 N, Range R13 W,  
of the Fifth Principal Meridian, BLACK HAWK County, Iowa. Previously recorded  
in Fee BK 2003 26210 (27) in County Recorder's Office. (by same)

(book, page, document number, etc.)

(Show reason for preparing this certificate, the evidence and detailed procedures used in establishing the corner positions and monumentation found or placed.)

Monument Description and Remarks:

A - FOUND 5/8" REBAR

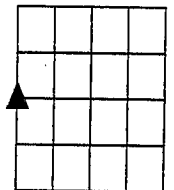
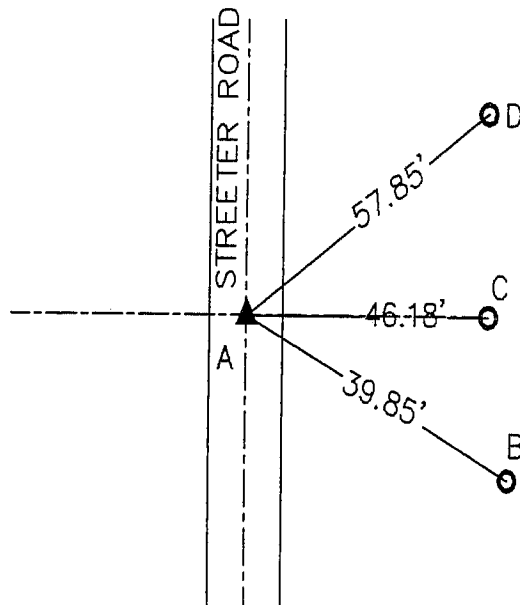
B - STEEL FENCE POST

C - PLASTIC WASHER ON POWER POLE

D - "X" NAILS IN POWER POLE

## PLAN VIEW

(Show a minimum of three reference ties to durable physical objects, relevant monuments and physical conditions that will enable recovery of the corner.)



SECTION 09

W 1/4 CORNER

I hereby certify that this land surveying document was prepared  
and the related survey work was performed by me or under my  
direct personal supervision and that I am a duly licensed Land  
Surveyor under the laws of the State of Iowa.

*Terry D. Van Laningham*  
Terry D. Van Laningham, PLS

License Number 10793

SEPT. 13, 2004

Date:

My registration renewal date is December 31, 2005

Pages or sheets covered by this seal:

THIS SHEET ONLY



## List Corners to be Indexed

Corners	Section	Township	Range
W 1/4 CORNER	09	T 90 N	R 13 W

BOOK 22 PAGE 23

TERRY D. VAN LANINGHAM, PLS. INC.

120 2ND STREET SW

WAVERLY, IOWA

(319) 352-0801