

2025-15022
RECORDED: 10/13/2025 03:38:46 PM
RECORDING FEE: \$7.00
IOWA E-FILING FEE: \$3.00
COMBINED FEE: \$10.00
REVENUE TAX: \$0.00
SANDIE L. SMITH, RECORDER
BLACK HAWK COUNTY, IOWA

Prepared by & Return to: Christopher C. Sweeney, HRS, LLC, 2206 East Bremer Avenue, Waverly, IA 50677, Phone 319-483-5187

United States Public Land Survey Corner Certificate

Land Survey Monument situated in
 Section 9, Township 90 North, Range 13 West of the Fifth Principal Meridian, **Black Hawk** County, Iowa.
 On file in **Document #2020-00017987** in the County Recorder's Office.

This certificate is being prepared in compliance with Iowa Code Chapter 355.11 because:

- There is no certificate on file for this corner.
- There are no longer three valid ties of record.
- There are changes to reference ties of record.
- There is change of monumentation of record.
- To clarify description of record monument (ties).

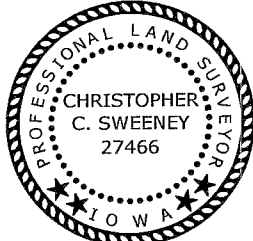
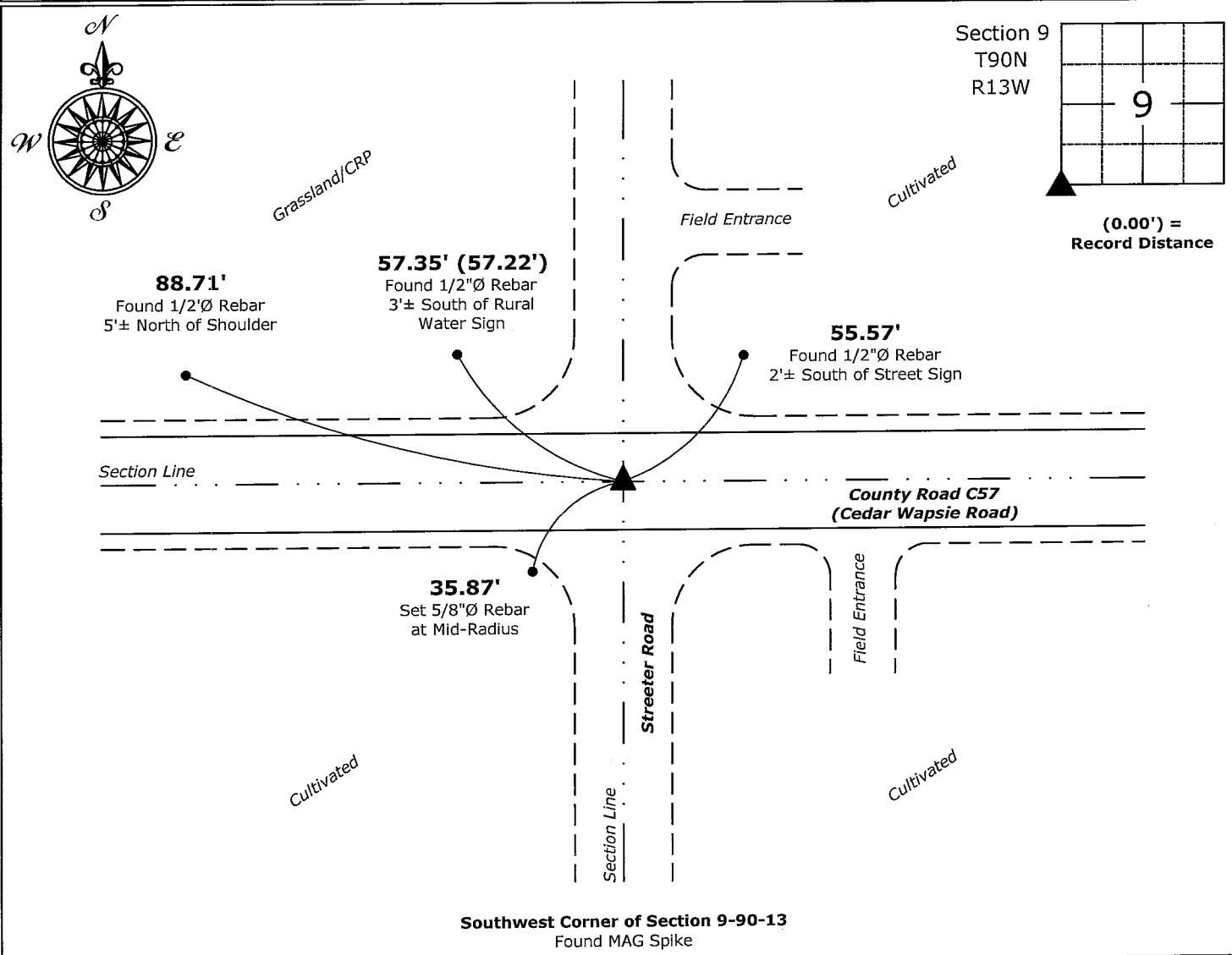
Monument Description and Remarks:

Southwest Corner:

Found Mag Spike with information obtained from the previously recorded Section Corner Certificate.

Plan View - Not to Scale

(Show a minimum of three reference ties to durable physical objects, relevant monuments and physical conditions that will enable recovery of the corner.)



I hereby certify that this land surveying document was prepared and the related survey work was performed by me or under my direct personal supervision and that I am a duly licensed Land Surveyor under the laws of the State of Iowa.

Christopher C. Sweeney 10-13-2025
 Christopher C. Sweeney Date:

License Number 27466
 My license renewal date is December 31, 2025
 Sheets covered by this seal: Individual sheet only

List Corner to be Indexed			
Corner	Section	Township	Range
SW	9	90	13
Project Number: 2025-597			
FB: Black Hawk 12, Page(s) 37-38			