

*Patticia L. Leno*

RONALD FOELSKE 1767 275TH ST JANESVILLE, IA 50647

PREPARED BY TERRY D. VAN LANINGHAM, PLS, INC. \* 120 2ND STREET, SW., WAVERLY, IOWA \* (319)352-0801

UNITED STATES PUBLIC LAND SURVEY CORNER CERTIFICATE  
OFLand Survey Monuments situated in Section 09, Township 90 N, Range 13 W,  
of the Fifth Principal Meridian, BLACK HAWK County, Iowa. Previously recorded  
in MISC. BK 326 p. 481 J.T. in County Recorder's Office.

(book, page, document number, etc.) \* SEE SECT. 17-90-13

(Show reason for preparing this certificate, the evidence and detailed procedures used in establishing the corner positions and monumentation found or placed.)

## Monument Description and Remarks:

A - FOUND 5/8" REBAR

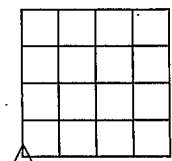
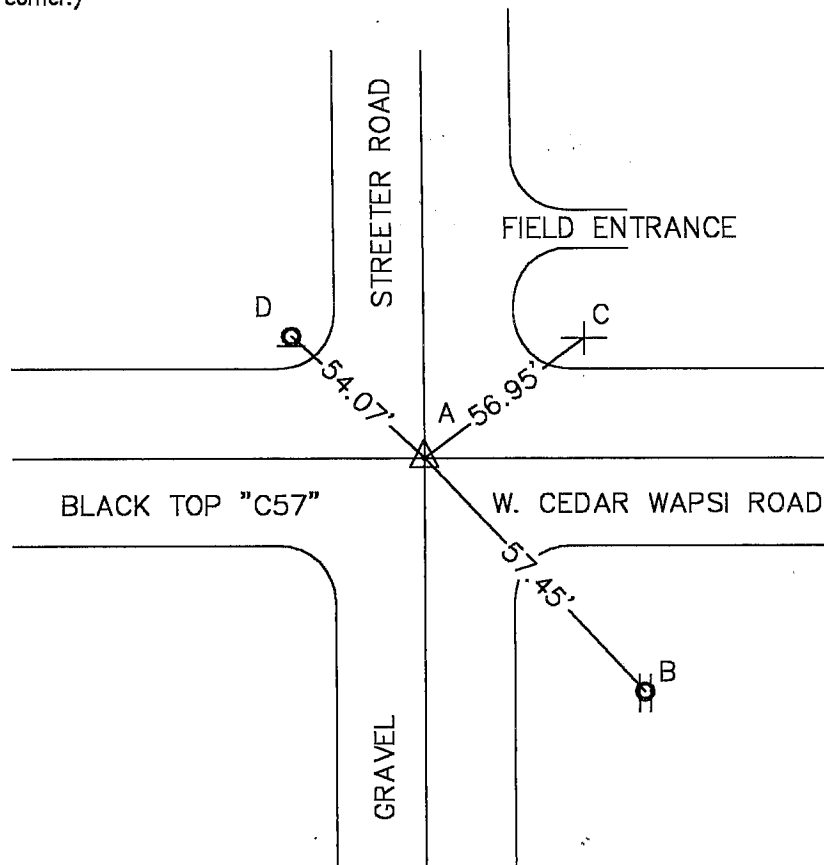
B - PLASTIC WASHER ON POWER POLE

C - STREET SIGN POST

D - PLASTIC WASHER ON STOP SIGN POST

## PLAN VIEW

(Show a minimum of three reference ties to durable physical objects, relevant monuments and physical conditions that will enable recovery of the corner.)



SECTION 09

SW CORNER  
09 - 90 - 13

I hereby certify that this land surveying document was prepared and the related survey work was performed by me or under my direct personal supervision and that I am a duly licensed Land Surveyor under the laws of the State of Iowa.

*Terry D. Van Laningham* AUG. 5, 2002  
Terry D. Van Laningham, PLS Date:

License number 10793

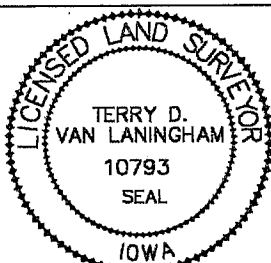
My registration renewal date is December 31, 2003.

Pages or sheets covered by this seal:

THIS SHEET ONLY

## List Corners to be Indexed

Corners	Section	Township	Range
SW CORNER	09	90 N	13 W

TERRY D. VAN LANINGHAM, PLS. INC.  
810 12TH AVE., NW WAVERLY, IOWA (319) 352 - 2132