

INDEX

BLACK HAWK COUNTY, IOWA:ss

FEE BOOK # 20 05 10367

PROOF

FILED FOR RECORD OCT 22, 2004, AT 4:00 P. M. FEE 1-5.00/- 1.00/

COMPARED

*Paul H. Helland*

BLACK HAWK COUNTY RECORDER

PAUL HELLAND

Paul H. Helland, 1107 Technology Parkway, Cedar Falls, Iowa 50613-6951, (319)-266-0161

UNITED STATES PUBLIC LAND SURVEY CORNER CERTIFICATE  
OFLAND SURVEY MONUMENTS SITUATED IN SECTION NO. 9, TOWNSHIP NO. 90 NORTH, RANGE  
NO. 13 WEST OF THE FIFTH PRINCIPAL MERIDIAN, BLACK HAWK COUNTY, IOWA.

PREVIOUSLY RECORDED IN BOOK \_\_\_\_\_, PAGE \_\_\_\_\_.

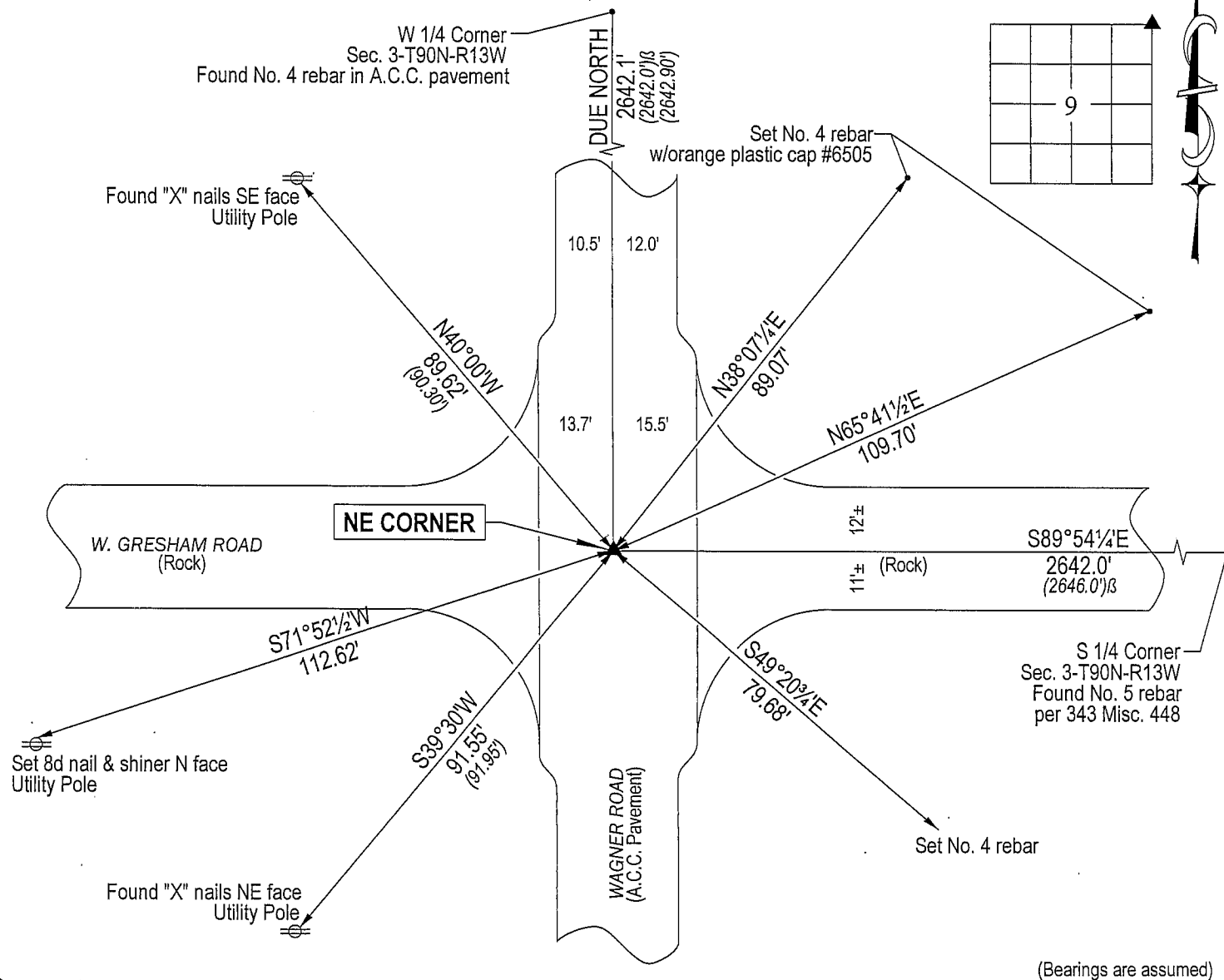
(SHOW REASON FOR PREPARING THIS CERTIFICATE, THE EVIDENCE AND DETAILED PROCEDURES USED IN ESTABLISHING THE  
CORNER POSITIONS AND MONUMENTATION FOUND OR PLACED.)

## MONUMENT DESCRIPTION AND REMARKS:

No corner certificate on file. Survey completed in the SW $\frac{1}{4}$ SW $\frac{1}{4}$  of Sec. 3-T90N-R13W.

NE CORNER: WPA chaining notes dated 8/12/1938 calls for concrete monument. All reference ties from 1938 obliterated by widening of Wagner Road right-of-way. An iron pin was found by me per Plat of Survey dated 11/3/1987 recorded in 277 Misc. 405, at that time Wagner Road was rock. Corner was retied 8/25/1992 by Black Hawk County Engineer prior to overlay of Wagner Road with A.C.C. pavement. Only two of those ties remain (utility poles NW and SW). Found No. 4 rebar in A.C.C. pavement. Intersection of tie distances falls 0.2' South & 0.8' East of said No. 4 rebar. Said found No. 4 rebar corresponds to position monumented per Plat of Survey recorded in 277 Misc. 405.

## PLAN VIEW

(SHOW A MINIMUM OF THREE REFERENCE TIES TO DURABLE PHYSICAL OBJECTS, RELEVANT MONUMENTS AND PHYSICAL  
CONDITIONS THAT WILL ENABLE RECOVERY OF THE CORNER.)

## HELLAND ENGINEERING &amp; SURVEYING, LTD.

1107 Technology Parkway  
Cedar Falls, Iowa 50613-6951  
(319)-266-0161(00.00') - Per Black Hawk County Engineer ties  
(00.00') $\beta$  - Per WPA chaining notes

File Name: 04-320c1.drg

I hereby certify that this land surveying document was prepared  
and the related survey work was performed by me or under my  
direct personal supervision and that I am a duly licensed Land  
Surveyor under the laws of the State of Iowa.*Paul H. Helland*  
Paul H. Helland  
License Number 6505  
My license renewal date is December 31, 2005.  
All pages or sheets are covered by this seal except:LIST CORNERS TO BE INDEXED  
CORNER SECTION TOWNSHIP RANGE  
NE CORNER 9 90N 13W

Rec.