

Reserved for County Recorder's use.

Doc ID: 008377330001 Type: GEN  
Recorded: 04/18/2018 at 12:21:15 PM  
Fee Amt: \$7.00 Page 1 of 1  
Black Hawk County Iowa  
SANDIE L. SMITH RECORDER  
File **2018-00016896**

Kyle J. Helland, 1107 Technology Parkway, Cedar Falls, Iowa 50613-6951, (319)-266-0161

UNITED STATES PUBLIC LAND SURVEY CORNER CERTIFICATE  
OF

LAND SURVEY MONUMENTS SITUATED IN SECTION NO. 8, TOWNSHIP NO. 90 NORTH, RANGE  
NO. 13 WEST OF THE FIFTH PRINCIPAL MERIDIAN, BLACK HAWK COUNTY, IOWA.  
PREVIOUSLY RECORDED IN N/A

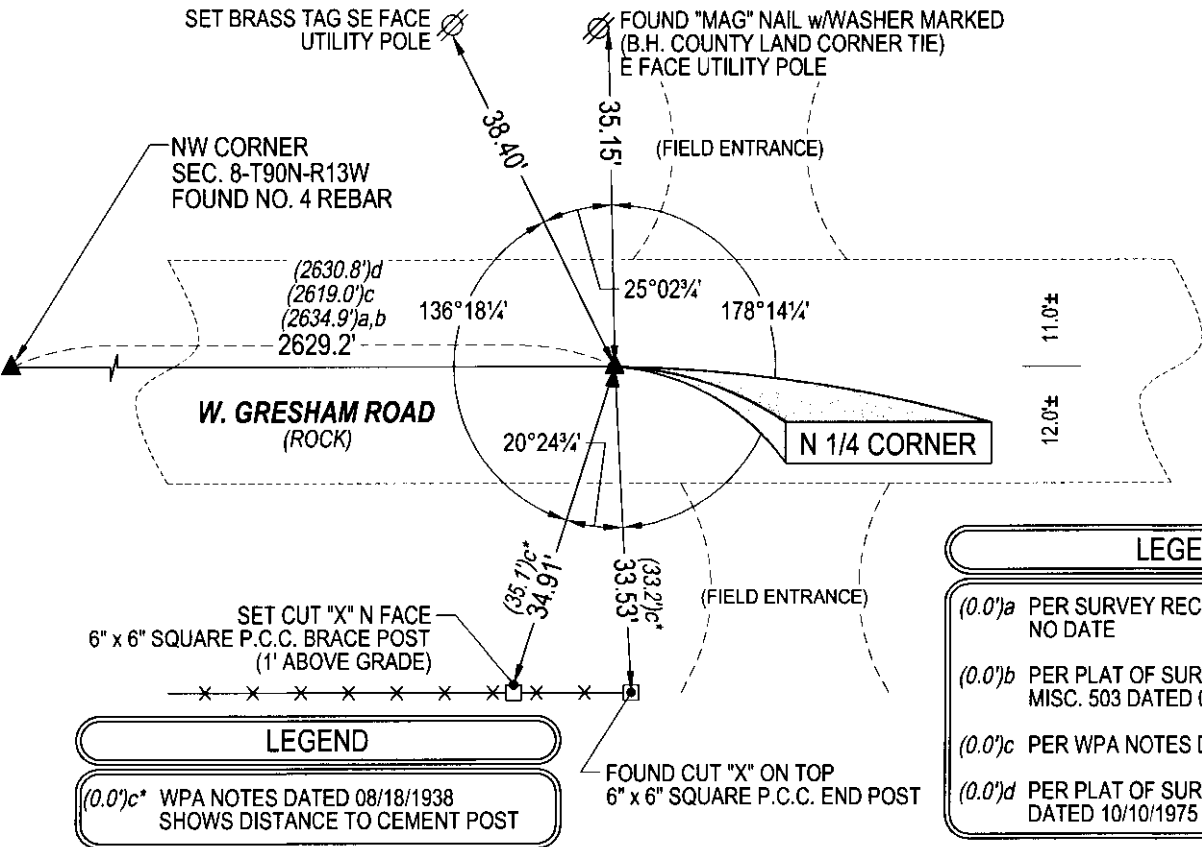
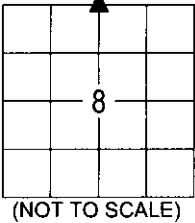
(SHOW REASON FOR PREPARING THIS CERTIFICATE, THE EVIDENCE AND DETAILED PROCEDURES USED IN ESTABLISHING THE  
CORNER POSITIONS AND MONUMENTATION FOUND OR PLACED.)

MONUMENT DESCRIPTION AND REMARKS:  
NO USPLSCC ON FILE. SURVEY COMPLETED IN THE NW 1/4 OF SEC. 8-T90N-R13W.

**N 1/4 CORNER:** SURVEY RECORD BOOK 1 PAGE 84 (NO DATE) STATES "F" AT CORNER LOCATION. PLAT OF  
SURVEY IN MISC. BOOK 4 PAGE 488 & MISC. BOOK 11 PAGE 503 BOTH DATED 06/05/1922 CALLS FOR [STONE  
LOCATED]. WPA NOTES PAGE 28 DATED 08/18/1938 CALLS FOR [FOUND LIMESTONE 2'x9"x13" AND 3"x6"x9"  
ALSO OAK HUB LOWERED STONES AND SET CM ON TOP 12" BELOW GROUND AND SET HUB ON SIDE]. PLAT  
OF SURVEY IN MISC. BOOK 212 PAGE 695 DATED 10/10/1975 CALLS FOR [FOUND N 1/4 CORNER]. PLAT OF  
SURVEY IN MISC. BOOK 252 PAGE 907 DATED 10/03/1983 CALLS FOR [FO. FROM TIES SET PIN]. SEARCHED  
AREA, FOUND NO. 4 REBAR (0.3' DEEP).

(SHOW A MINIMUM OF THREE REFERENCE TIES TO DURABLE PHYSICAL OBJECTS, RELEVANT MONUMENTS AND PHYSICAL  
CONDITIONS THAT WILL ENABLE RECOVERY OF THE CORNER.)

PLAN VIEW



HELLAND ENGINEERING & SURVEYING, LTD.  
1107 Technology Parkway  
Cedar Falls, Iowa 50613-6951  
(319)-266-0161

SHINER = 4d. NAIL & 1 5/16"Ø METAL SHINER DRAWN BY: JBL  
BRASS TAG = 4d. NAIL & 13/16"Ø BRASS TAG  
OPC = PLASTIC CAP (O=ORANGE, R=RED, Y=YELLOW)  
(00') RECORDED AS FILE NAME: 18-123-28.DWG

I hereby certify that this land surveying document was prepared  
and the related survey work was performed by me or under my  
direct personal supervision and that I am a duly licensed  
Professional Land Surveyor under the laws of the State of Iowa.  
*Kyle J. Helland* 4/10/18  
Kyle J. Helland  
License Number 23212  
My license renewal date is December 31, 2019.  
All pages or sheets are covered by this seal except:

LIST CORNERS TO BE INDEXED			
CORNER	SECTION	TOWNSHIP	RANGE
N 1/4 CORNER	8	90N	13W
S 1/4 CORNER	5	90N	13W

File Number: 2018-00016896 Seq: 1