

INDEX

BLACK HAWK COUNTY, IOWA:ss

FEE BOOK # 2004 22522

PROOF

FILED FOR RECORD

JAN 22

2004

AT

2:00P.

M.

FEE 1-5.00-5.00X

COMPARED

Patricia A. Shoo

BLACK HAWK COUNTY RECORDER

PAUL HELLAND

Jeffrey P. Helland, 1107 Technology Parkway, Cedar Falls, Iowa 50613-6951, (319)-266-0161

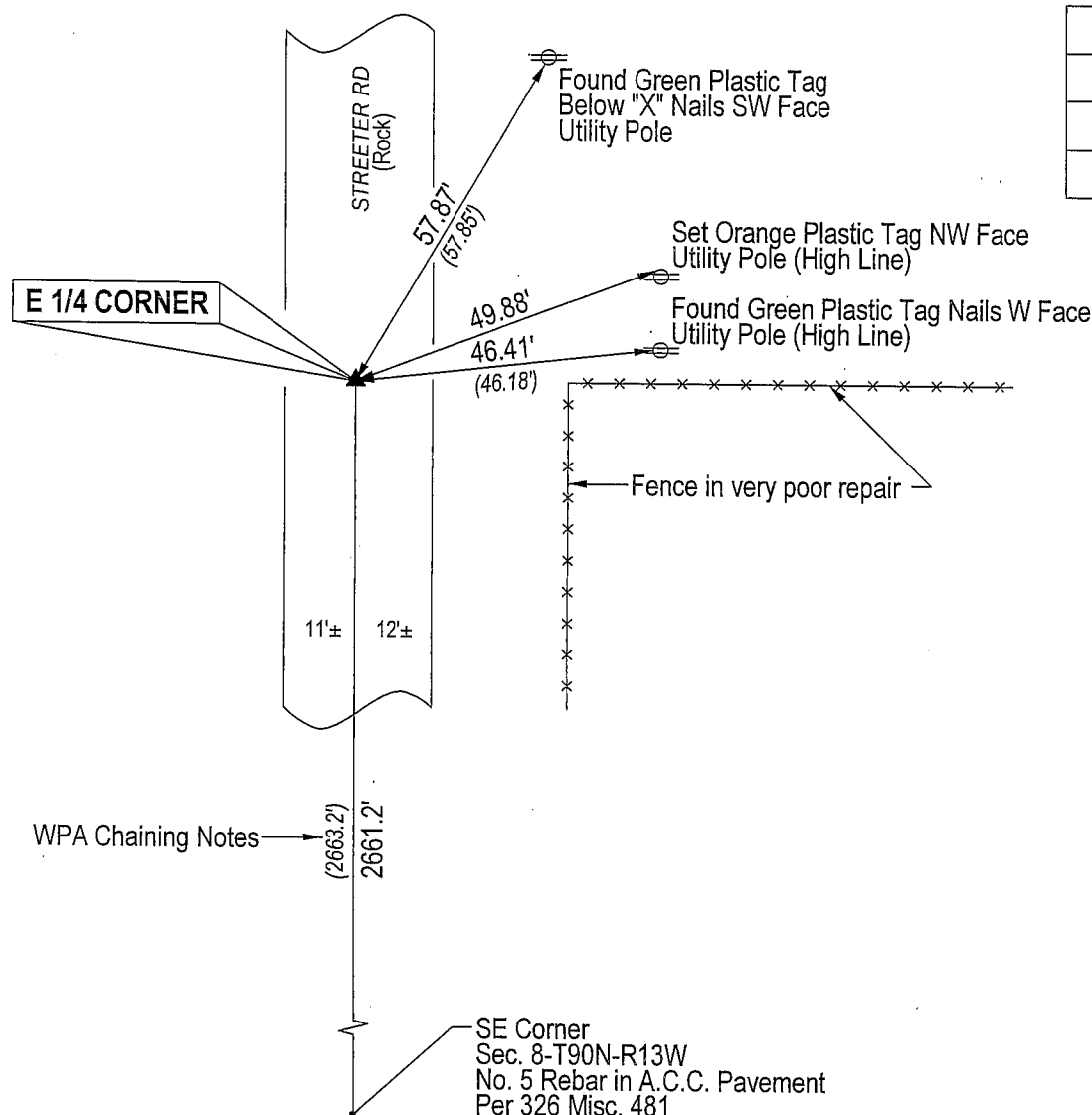
UNITED STATES PUBLIC LAND SURVEY CORNER CERTIFICATE
OFLAND SURVEY MONUMENTS SITUATED IN SECTION NO. 8, TOWNSHIP NO. 90 NORTH, RANGE
NO. 13 WEST OF THE FIFTH PRINCIPAL MERIDIAN, Black Hawk COUNTY, IOWA.PREVIOUSLY RECORDED IN FEE BOOK # 2003 26210(SHOW REASON FOR PREPARING THIS CERTIFICATE, THE EVIDENCE AND DETAILED PROCEDURES USED IN ESTABLISHING THE
CORNER POSITIONS AND MONUMENTATION FOUND OR PLACED.)

MONUMENT DESCRIPTION AND REMARKS:

Monumentation per Corner Certificate Fee Book #2003 26210 has changed. Survey completed in the NE 1/4 SE 1/4
of Sec. 8-T90N-R13W.

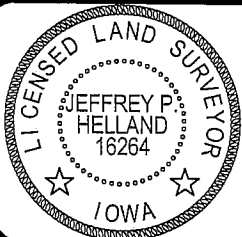
→ E 1/4 Corner: Fee Book #2003 26210 calls for "found 5/8" rebar." Found No. 4 rebar (1.2' long) at location called for in
Fee Book #2003 26210. WPA chaining distance (2663.2') from SE Corner of Sec. 8 falls 2' North of said No. 4 rebar.
Removed No. 4 rebar and started excavation to verify location of corner. Found concrete monument w/brass cap
2.8' deep. Set No. 4 rebar w/orange plastic cap #16264 above said concrete monument. No. 4 rebar is 0.3' deep.

PLAN VIEW

(SHOW A MINIMUM OF THREE REFERENCE TIES TO DURABLE PHYSICAL OBJECTS, RELEVANT MONUMENTS AND PHYSICAL
CONDITIONS THAT WILL ENABLE RECOVERY OF THE CORNER.)**HELLAND ENGINEERING & SURVEYING, LTD.**
1107 Technology Parkway
Cedar Falls, Iowa 50613-6951
(319)-266-0161

(00.00') - Recorded As

File Name: 04-102CC.drg

I hereby certify that this land surveying document was prepared
and the related survey work was performed by me or under my
direct personal supervision and that I am a duly licensed Land
Surveyor under the laws of the State of Iowa.*Jeffrey P. Helland* 1/16/04
Jeffrey P. Helland
License Number 16264
My license renewal date is December 31, 2005.
All pages or sheets are covered by this seal except:**LIST CORNERS TO BE INDEXED**

CORNER	SECTION	TOWNSHIP	RANGE
E 1/4 CORNER	8	90N	13W

Rec.