

Jeffrey P. Helland, 1107 Technology Parkway, Cedar Falls, Iowa 50613-6951, (319)-266-0161

## UNITED STATES PUBLIC LAND SURVEY CORNER CERTIFICATE OF

LAND SURVEY MONUMENTS SITUATED IN SECTION NO. 8, TOWNSHIP NO. 90 NORTH, RANGE  
NO. 13 WEST OF THE FIFTH PRINCIPAL MERIDIAN, BLACK HAWK COUNTY, IOWA.  
PREVIOUSLY RECORDED IN N/A

(SHOW REASON FOR PREPARING THIS CERTIFICATE, THE EVIDENCE AND DETAILED PROCEDURES USED IN ESTABLISHING THE  
CORNER POSITIONS AND MONUMENTATION FOUND OR PLACED.)

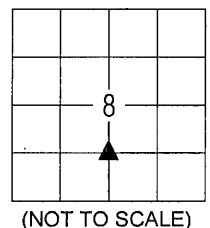
### MONUMENT DESCRIPTION AND REMARKS:

NO USPLSCC ON RECORD. SURVEY COMPLETED IN THE SE 1/4 OF SEC. 8-T90N-R13W.

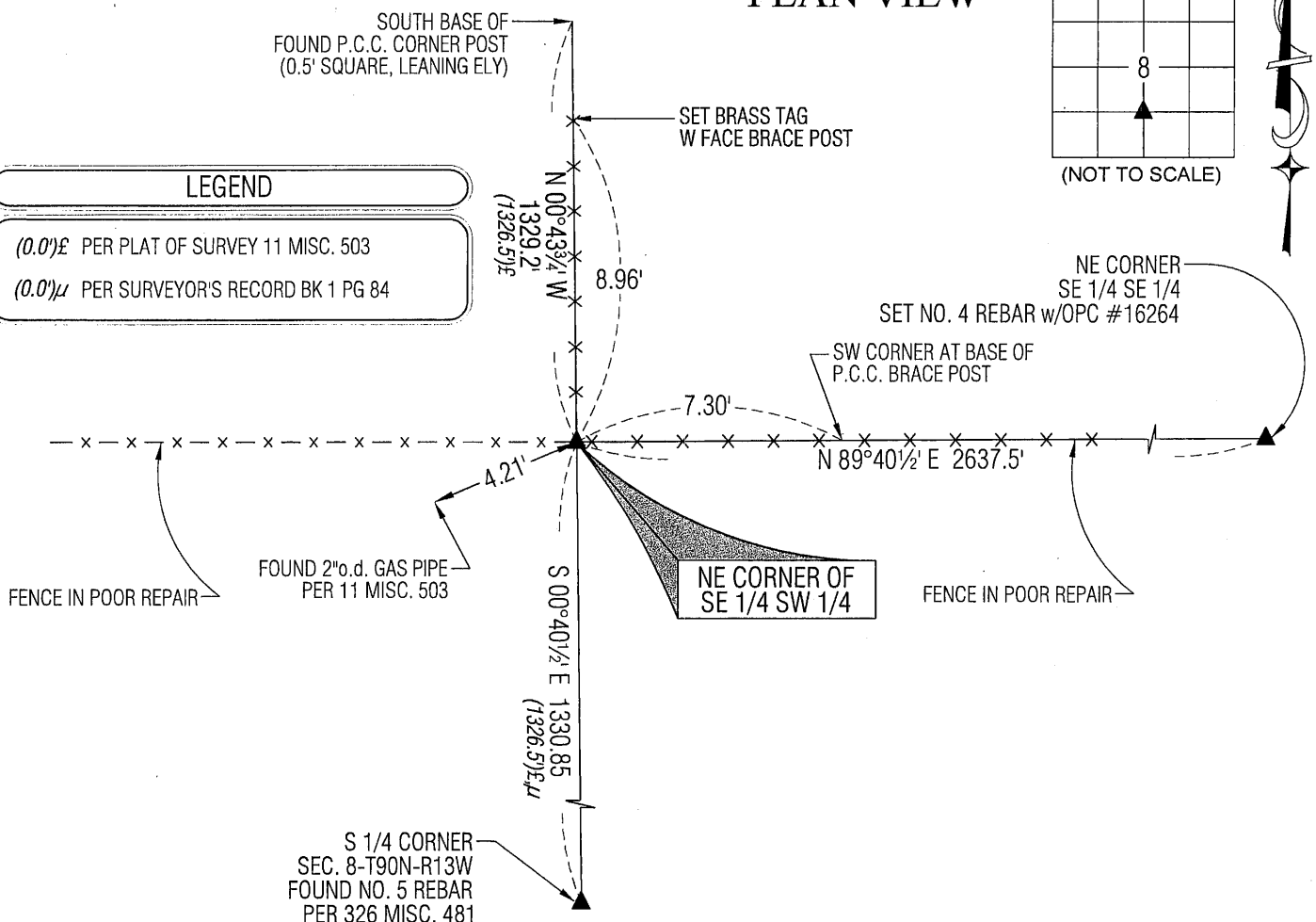
NE CORNER OF SE 1/4 SW 1/4: NO BLACK HAWK COUNTY ENGINEER'S REFERENCE TIES AVAILABLE. SURVEYOR'S RECORD  
BOOK 1 PAGE 84 (NO DATE) CALLS FOR [SET GAS PIPE]. PLAT OF SURVEY 11 MISC. 503 DATED 6/5/1922 CALLS FOR [GAS  
PIPE SET]. SURVEYOR'S RECORD BOOK SURVEY AND 11 MISC. 503 BELIEVED TO BE THE RECORDINGS OF THE SAME  
SURVEY. CENTER OF SECTION FOR THIS SURVEY WAS ESTABLISHED BY SETTING AT THE MIDPOINT OF A STRAIGHT LINE  
BETWEEN THE N 1/4 CORNER AND THE S 1/4 CORNER, THE CALLED FOR GAS PIPE AT THIS LOCATION COULD NOT BE FOUND.  
PLAT OF SURVEY BY PHILIP G. RITCHIE DATED 10/10/1975 IN 212 MISC. 695 ESTABLISHED THE CENTER OF SECTION AT THE  
INTERSECTION OF 1/4 LINES, w/A 1 1/4" IRON PIPE BEING SET. FOUND A 1 1/4" o.d. IRON PIPE 6.65' SOUTH AND 2.3' WEST OF A  
FOUND P.C.C. CORNER POST (0.5' SQUARE). FOUND A 2" o.d. GAS PIPE PER SAID PLAT OF SURVEY 11 MISC. 503 AT THE NE  
CORNER OF SE 1/4 SW 1/4. SAID PIPE IS 3.9' WEST AND 1.7' SOUTH OF P.C.C. CORNER POST (0.5' SQUARE, LEANING ELY  
w/P.C.C. BRACE EAST, STEEL BRACE WEST AND WOOD BRACE NORTH). THESE P.C.C. CORNER POSTS POSITIONS WERE  
ESTABLISHED PRIOR TO 11 MISC. 503 AND REPRESENT THE TRUE POSITIONS OF THEIR CORNERS. SET NO. 4 REBAR w/OPC  
#16264 AT THE SOUTH BASE OF A SAID P.C.C. CORNER POST AT THE NE CORNER OF SE 1/4 SW 1/4.

(SHOW A MINIMUM OF THREE REFERENCE TIES TO DURABLE PHYSICAL OBJECTS, RELEVANT MONUMENTS AND PHYSICAL  
CONDITIONS THAT WILL ENABLE RECOVERY OF THE CORNER.)

### PLAN VIEW



(NOT TO SCALE)

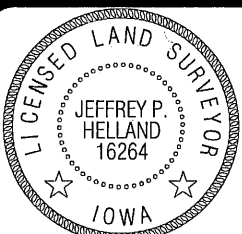


(BEARINGS ARE ASSUMED)



HELLAND ENGINEERING & SURVEYING, LTD.  
1107 Technology Parkway  
Cedar Falls, Iowa 50613-6951  
(319)-266-0161

SHINER = 8D NAIL & 1 5/16" Ø METAL SHINER  
BRASS TAG = 8D NAIL & 13/16" Ø BRASS TAG  
OPC = PLASTIC CAP (O=ORANGE, R=RED, Y=YELLOW)  
(00') RECORDED AS FILE NAME: 11-157C3.DWG



I hereby certify that this land surveying document was prepared  
and the related survey work was performed by me or under my  
direct personal supervision and that I am a duly licensed Land  
Surveyor under the laws of the State of Iowa.

*Jeffrey P. Helland 4/18/11*  
Jeffrey P. Helland  
License Number 16264  
My license renewal date is December 31, 2011.  
All pages or sheets are covered by this seal except:

### LIST CORNERS TO BE INDEXED

CORNER	SECTION	TOWNSHIP	RANGE
NE COR. SE 1/4 SW 1/4	8	90N	13W
SE COR. NE 1/4 SW 1/4	8	90N	13W
SW COR. NW 1/4 SE 1/4	8	90N	13W
NW COR. SW 1/4 SE 1/4	8	90N	13W