



Doc ID: 009430710001 Type: GEN
Recorded: 11/15/2018 at 09:28:44 AM
Fee Amt: \$7.00 Page 1 of 1
Black Hawk County Iowa
SANDIE L. SMITH RECORDER

File 2019-00007801

Reserved for County Recorder's use.

Jeffery P. Helland, 1107 Technology Parkway, Cedar Falls, Iowa 50613-6951, (319)-266-0161

UNITED STATES PUBLIC LAND SURVEY CORNER CERTIFICATE OF

LAND SURVEY MONUMENTS SITUATED IN SECTION NO. 7, TOWNSHIP NO. 90 NORTH, RANGE NO. 13 WEST OF THE FIFTH PRINCIPAL MERIDIAN, BLACK HAWK COUNTY, IOWA.
PREVIOUSLY RECORDED IN FEE BOOK # 2005 14313

(SHOW REASON FOR PREPARING THIS CERTIFICATE, THE EVIDENCE AND DETAILED PROCEDURES USED IN ESTABLISHING THE CORNER POSITIONS AND MONUMENTATION FOUND OR PLACED.)

MONUMENT DESCRIPTION AND REMARKS:

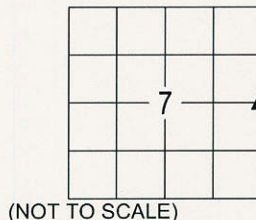
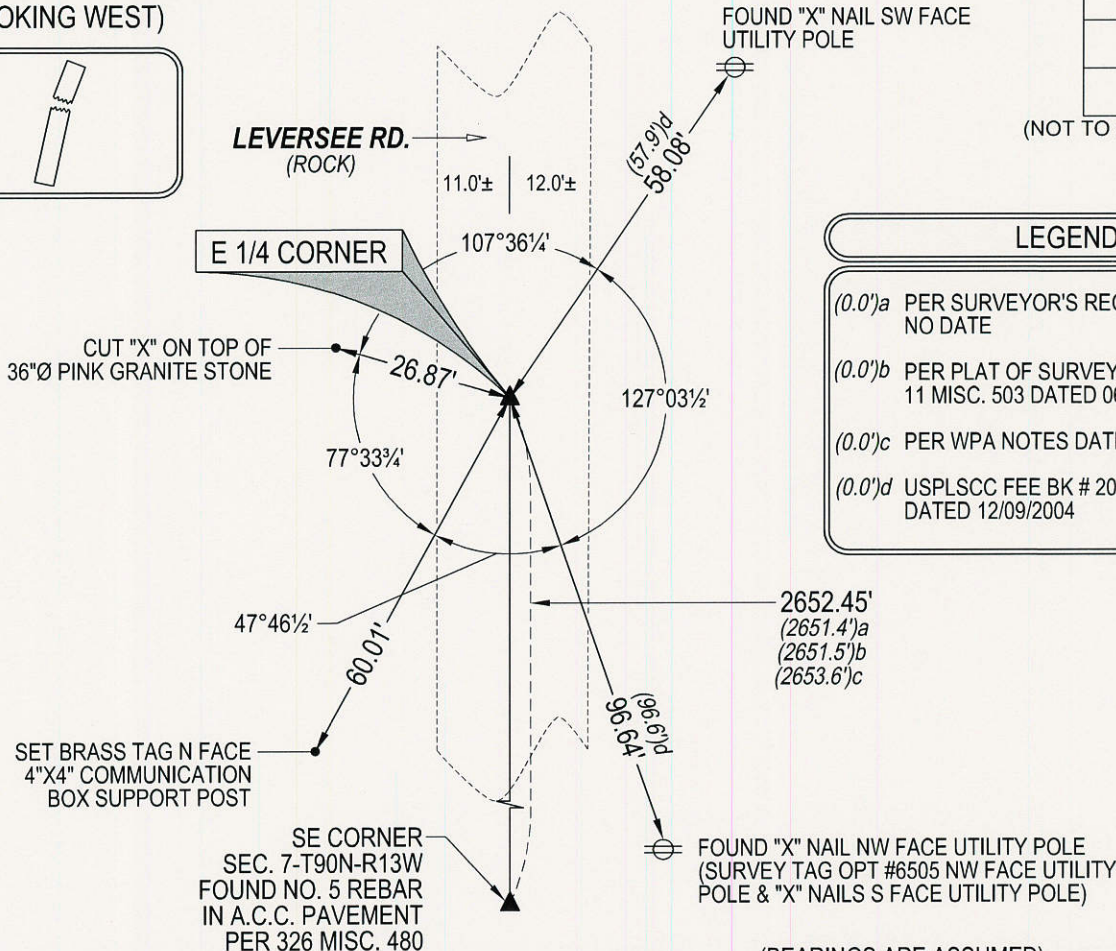
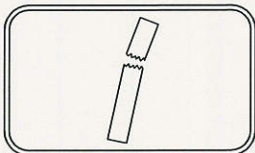
MONUMENTATION WAS DISTURBED. SURVEY COMPLETED IN THE SW 1/4 OF SEC. 8-T90N-R13W.

→ **E 1/4 CORNER:** SURVEYOR'S RECORD BOOK 1 PAGE 84 CALLS FOR [BOX WITH LETTER F]. USPLSCC FEE BOOK # 2005-14313 CALLS FOR [CURRENT SECTION CORNER CERTIFICATE NOT ON FILE IN THE BLACK HAWK COUNTY ENGINEER'S OFFICE FOUND CONCRETE W.P.A. MONUMENT WITH BRASS CAP, 0.6' FEET BELOW THE SURFACE OF GRANULAR SURFACED LEVERSEE ROAD. SET RAILROAD SPIKE 0.2' FEET BELOW MONUMENT TOP ON NORTH SIDE TO AID IN FUTURE LOCATION.] SEARCHED AREA FOUND BROKEN CONCRETE MONUMENT WITH BRASS CAP (TOP 1.0± FOOT) 0.5± DEEP LEANING NORTHERLY, EXCAVATED FURTHER FOUND BASE OF SAID MONUMENT LEANING NORTHERLY, STRAIGHTENED BASE, RESET TOP OF MONUMENT ABOVE BASE WITH REBAR ON ALL SIDES TO REINFORCE MONUMENT.

PLAN VIEW

(SHOW A MINIMUM OF THREE REFERENCE TIES TO DURABLE PHYSICAL OBJECTS, RELEVANT MONUMENTS AND PHYSICAL CONDITIONS THAT WILL ENABLE RECOVERY OF THE CORNER.)

SIDE VIEW OF MONUMENT (LOOKING WEST)



LEGEND

- (0.0')a PER SURVEYOR'S RECORD BK 1 PG 84 NO DATE
- (0.0')b PER PLAT OF SURVEY 4 MISC. 488 & 11 MISC. 503 DATED 06/05/1922
- (0.0')c PER WPA NOTES DATED 08/18/1938
- (0.0')d USPLSCC FEE BK # 2005-14313 DATED 12/09/2004

(BEARINGS ARE ASSUMED)



HELLAND ENGINEERING & SURVEYING, LTD.
1107 Technology Parkway
Cedar Falls, Iowa 50613-6955
(319)-266-0161

SHINER = 4d. NAIL & 1 5/16"Ø METAL SHINER DRAWN BY: CDR
BRASS TAG = 4d. NAIL & 13/16"Ø BRASS TAG
OPC = PLASTIC CAP (O=ORANGE, R=RED, Y=YELLOW)
(00') RECORDED AS FILE NAME: 18-217-26.DWG



I hereby certify that this land surveying document was prepared and the related survey work was performed by me or under my direct personal supervision and that I am a duly licensed Professional Land Surveyor under the laws of the State of Iowa.
Jeffrey P. Helland 11/12/18
Jeffrey P. Helland
License Number 16264
My license renewal date is December 31, 2019.
All pages or sheets are covered by this seal except:

LIST CORNERS TO BE INDEXED			
CORNER	SECTION	TOWNSHIP	RANGE
W 1/4 CORNER	7	90N	13W
E 1/4 CORNER	8	90N	13W