

SC  
MISC  
INDEX *sf*  
MARGIN  
PROOF *gm*  
COMPARE

BLACK HAWK COUNTY IOWA:SS **007954**  
FILED FOR RECORD OCT 13, 2000 AT  
4:00 P. M. AND RECORDED IN BOOK 340  
OF MISC PAGE 527.

*Catherine S. Leo*

RECORDER

FEE 1-5.00/

PAUL HELLAND

Paul H. Helland, 1107 Technology Parkway, Cedar Falls, Iowa 50613-6951, (319)-266-0161

## UNITED STATES PUBLIC LAND SURVEY CORNER CERTIFICATE OF

LAND SURVEY MONUMENTS SITUATED IN SECTION NO. 7, TOWNSHIP NO. 90 NORTH, RANGE  
NO. 13 WEST OF THE FIFTH PRINCIPAL MERIDIAN, BLACK HAWK COUNTY, IOWA.

PREVIOUSLY RECORDED IN BOOK \_\_\_\_\_, PAGE \_\_\_\_\_.

(SHOW REASON FOR PREPARING THIS CERTIFICATE, THE EVIDENCE AND DETAILED PROCEDURES USED IN ESTABLISHING THE  
CORNER POSITIONS AND MONUMENTATION FOUND OR PLACED.)

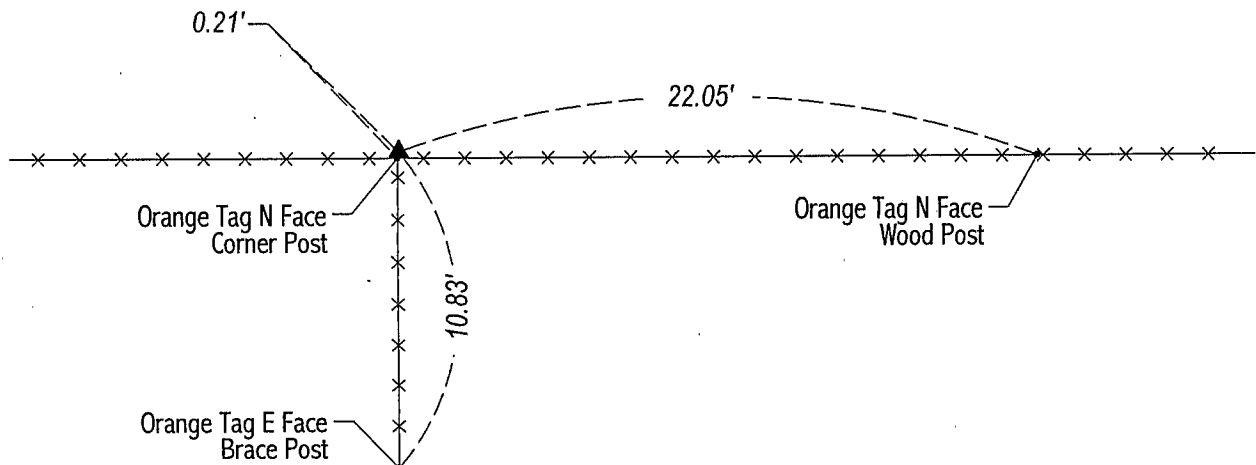
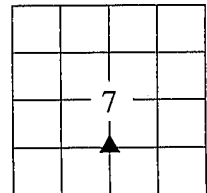
### MONUMENT DESCRIPTION AND REMARKS:

SURVEY DONE IN S 1/2 SWFRL 1/4 OF SEC. 7-T90N-R13W.

NE CORNER OF SE 1/4 SWFRL 1/4: No county ties. Set No. 4 rebar w/orange cap per Plat of Survey recorded in Misc. 219-154,  
corner falls just North of existing corner post.

### PLAN VIEW

(SHOW A MINIMUM OF THREE REFERENCE TIES TO DURABLE PHYSICAL OBJECTS, RELEVANT MONUMENTS AND PHYSICAL  
CONDITIONS THAT WILL ENABLE RECOVERY OF THE CORNER.)

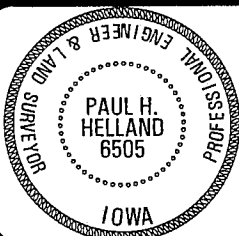


NE CORNER SE 1/4 SWFRL 1/4



**HELLAND ENGINEERING & SURVEYING, LTD.**  
1107 Technology Parkway  
Cedar Falls, Iowa 50613-6951  
(319)-266-0161

FILE NAME: 00-274CC.DRG



I hereby certify that this land surveying document was prepared  
and the related survey work was performed by me or under my  
direct personal supervision and that I am a duly licensed Land  
Surveyor under the laws of the State of Iowa.

*Paul H. Helland 10/2/01*  
Paul H. Helland  
License Number 6505

My license renewal date is December 31, 2001.  
All pages or sheets are covered by this seal except:

LIST CORNERS TO BE INDEXED			
CORNER	SECTION	TOWNSHIP	RANGE
NE CORNER	7	90N	13W
SE 1/4 SWFRL 1/4			