

PAUL HELLAND

Paul H. Helland, 1107 Technology Parkway, Cedar Falls, Iowa 50613-6951, (319)-266-0161

UNITED STATES PUBLIC LAND SURVEY CORNER CERTIFICATE OF

LAND SURVEY MONUMENTS SITUATED IN SECTION NO. 6, TOWNSHIP NO. 90 NORTH, RANGE NO. 13 WEST OF THE FIFTH PRINCIPAL MERIDIAN, BLACK HAWK COUNTY, IOWA. PREVIOUSLY RECORDED IN BOOK _____, PAGE _____.

(SHOW REASON FOR PREPARING THIS CERTIFICATE, THE EVIDENCE AND DETAILED PROCEDURES USED IN ESTABLISHING THE CORNER POSITIONS AND MONUMENTATION FOUND OR PLACED.)

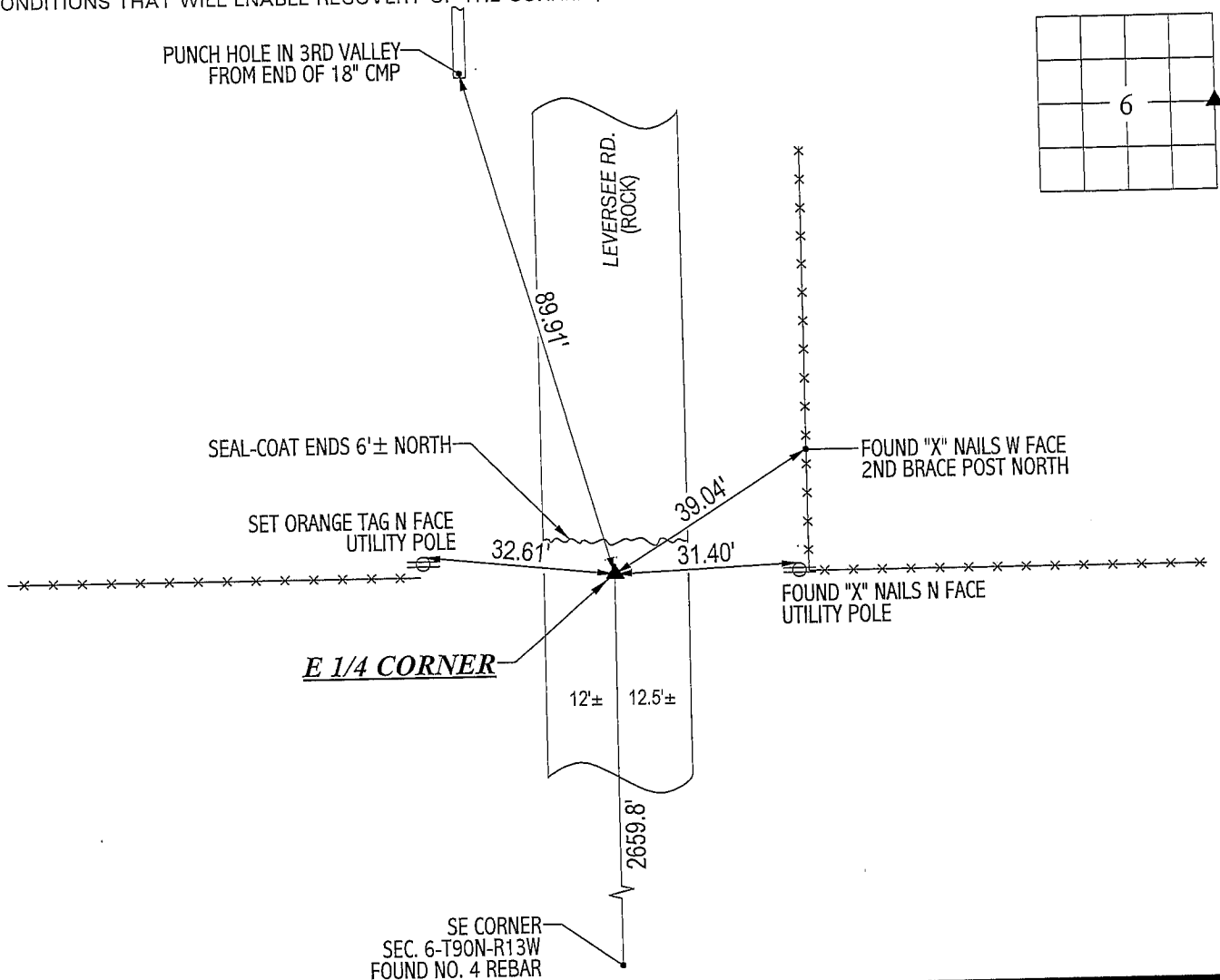
MONUMENT DESCRIPTION AND REMARKS:

NO CORNER CERTIFICATE ON FILE. SURVEY DONE IN SW 1/4 OF SEC. 5-T90N-R13W.

E 1/4 CORNER: BLACK HAWK COUNTY ENGINEER REFERENCE TIES (DEC. 1958) CALL FOR A CONCRETE MONUMENT 12" DEEP. FOUND 1.1' LONG NO. 4 REBAR 0.7' DEEP. FOUND 2' LONG 3/4" TWIST PIN 0.2' DEEP TOP BENT NORTHERLY, REMOVED TWIST PIN. CONTINUED EXCAVATION 2' Ø HOLE UNDER SEAL-COATED SURFACE x 4' DEEP & PROBED IN ALL DIRECTIONS, NO MONUMENT FOUND. WPA CHAINING NOTES STATE DISTANCE FROM SE CORNER SEC. 6 IS 2,663.4' & DISTANCE FROM SE CORNER TO NE CORNER IS 4,947.0'. DISTANCE MEASURED FROM SE CORNER TO FOUND NO. 4 REBAR @ E 1/4 CORNER IS 2659.8' & DISTANCE MEASURED FROM SE CORNER TO NE CORNER IS 4,947.1'. EXCAVATED 3.9' NORTH OF FOUND NO. 4 REBAR 2' Ø HOLE UNDER SEAL-COATED SURFACE x 4' DEEP & PROBED IN ALL DIRECTIONS, NO MONUMENT FOUND. EXCAVATION FOR MONUMENT WAS VERY EXTENSIVE. COUNTY REFERENCE TIES SHOW E 1/4 CORNER IS LINE w/FENCES EAST & WEST, NONE OF COUNTY TIES REMAIN. NO. 4 REBAR LINES UP w/FENCES EAST & WEST PER TIES. FOUND "X" NAILS IN A UTILITY POLE & BRACE POST TO THE EAST (ORIGIN UNKNOWN). REPLACED NO. 4 REBAR @ LOCATION FOUND IN LINE w/FENCES EAST & WEST @ A DEPTH OF 0.2'.

PLAN VIEW

(SHOW A MINIMUM OF THREE REFERENCE TIES TO DURABLE PHYSICAL OBJECTS, RELEVANT MONUMENTS AND PHYSICAL CONDITIONS THAT WILL ENABLE RECOVERY OF THE CORNER.)



HES HELLAND ENGINEERING & SURVEYING, LTD.
1107 Technology Parkway
Cedar Falls, Iowa 50613-6951
(319)-266-0161

FILE NAME: 02-281C2.DRG



I hereby certify that this land surveying document was prepared and the related survey work was performed by me or under my direct personal supervision and that I am a duly licensed Land Surveyor under the laws of the State of Iowa.

Paul H. Helland 10/23/02
Paul H. Helland
License Number 6505
My license renewal date is December 31, 2003.
All pages or sheets are covered by this seal except:

LIST CORNERS TO BE INDEXED			
CORNER	SECTION	TOWNSHIP	RANGE
E 1/4 CORNER	6	90N	13W

Rec