

Number: 202300004831
Recorded: 9/20/2022 at 11:53:10.0 AM
County Recording Fee: \$7.00
Iowa E-Filing Fee: \$3.00
Combined Fee: \$10.00
Revenue Tax:
Sandie L. Smith, RECORDER
Black Hawk County, Iowa

Prepared by & Return to: Isaiah M. Reicks, 2206 East Bremer Avenue, Waverly, IA 50677, Ph. 319-483-5187

United States Public Land Survey Corner Certificate

Land Survey Monument situated in
Section 5, Township 90 North, Range 13 West of the Fifth Principal Meridian, **Black Hawk** County, Iowa.
Not on file in the County Recorder's Office.

This certificate is being prepared in compliance
with Iowa Code Chapter 355.11 because:

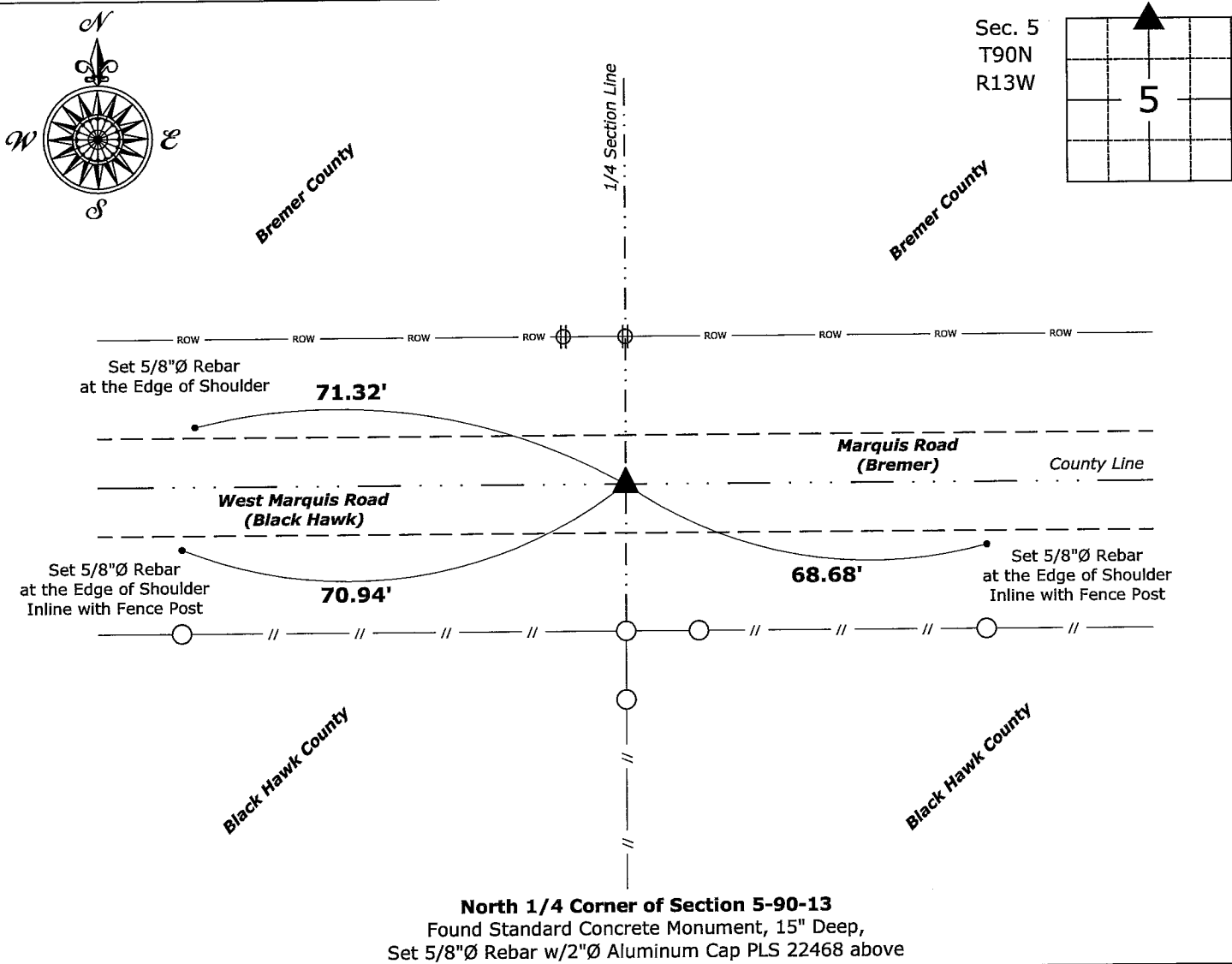
- ☒ There is no certificate on file for this corner.
☐ There are no longer three valid ties of record.
☐ There are changes to reference ties of record.
☐ There is change of monumentation of record.
☐ To clarify description of record monument (ties).

Monument Description and Remarks:

North 1/4 Corner: Found Standard Concrete Monument, 15" Deep, with information obtained from the Black Hawk County Engineers Office. Set 5/8"Ø Rebar w/2"Ø Aluminum Cap PLS 22468 above the found monument to perpetuate the corner.

Plan View

(Show a minimum of three reference ties to durable physical objects, relevant monuments and physical conditions that will enable recovery of the corner.)



North 1/4 Corner of Section 5-90-13
Found Standard Concrete Monument, 15" Deep,
Set 5/8"Ø Rebar w/2"Ø Aluminum Cap PLS 22468 above



I hereby certify that this land surveying document was prepared and the related survey work was performed by me or under my direct personal supervision and that I am a duly licensed Land Surveyor under the laws of the State of Iowa.
Isaiah M. Reicks 9-19-22
Isaiah M. Reicks Date:
License number 22468
My license renewal date is December 31, 2023.
Sheets covered by this seal: Individual sheet only

List Corner to be Indexed			
Corner	Section	Twp.	Range
N 1/4	5	90	13
Project Number: 2022-561			
FB: Bremer 17, Pgs. 9-10			