

REC FEE \_\_\_\_\_  
E FEE \_\_\_\_\_  
TRAN FEE \_\_\_\_\_  
REV FEE \_\_\_\_\_  
GF \_\_\_\_\_  
*gm*

Doc ID: 005595290001 Type: GEN  
Recorded: 10/10/2014 at 01:06:30 PM  
Fee Amt: \$0.00 Page 1 of 1  
Black Hawk County Iowa  
JUDITH A MCCARTHY RECORDER  
File **2015-00006300**

\* PREPARED BY: BLACK HAWK COUNTY ENGINEERS OFFICE  
316 E. FIFTH STREET, ROOM 211 WATERLOO, IOWA 50703

PH.# (319) 833-3008 SLSI 9-94  
FAX.# (319) 833-3139 BHCO 03-09

UNITED STATES PUBLIC LAND SURVEY CORNER CERTIFICATE OF  
Land Survey Monuments situated in Section 4, Township 90 N,  
Range 13 W, of the Fifth Principal Meridian, BLACK HAWK County, Iowa.  
Previously recorded in Fee Book 2005, Page 10366, in County Recorder's Office.

(Show reason for preparing this certificate): The corner monument has been Replaced or Modified, per Ia. Code 355.11(1)(c)

(Evidence and detailed procedures used in establishing the corner position(s) and monumentation found or placed.)

Monument Description and Remarks: E. 1/4 COR.  
CORNER RESET & TIES UPDATED FOR H.M.A. RESURF. PROJECT LFM-1307--7X-07. PRIOR TO  
RESURF. PROJECT, FOUND 1/2" (#4) REBAR PER FEE BOOK# 2005-10366 AND TEMP. REF.  
COR. LOC. PER RTK GPS. AFTER 2" DP. MILL, NO SOUNDING REMAINED @ ± RTK  
REFERENCE LOCATION, w/ NO FURTHER EXCAVATION. PVMNT. RESURFACED w/ +3.5" (2"  
INT. & 1.5" SURF.) H.M.A. PAVING. AFTER H.M.A. RESURFACE, RESET CORNER WITH 6" L.  
MAG SPIKE w/ MTL. WASHER (PLS #15748) LOCATED @ ±0.25' WEST OF H.M.A. JOINT.

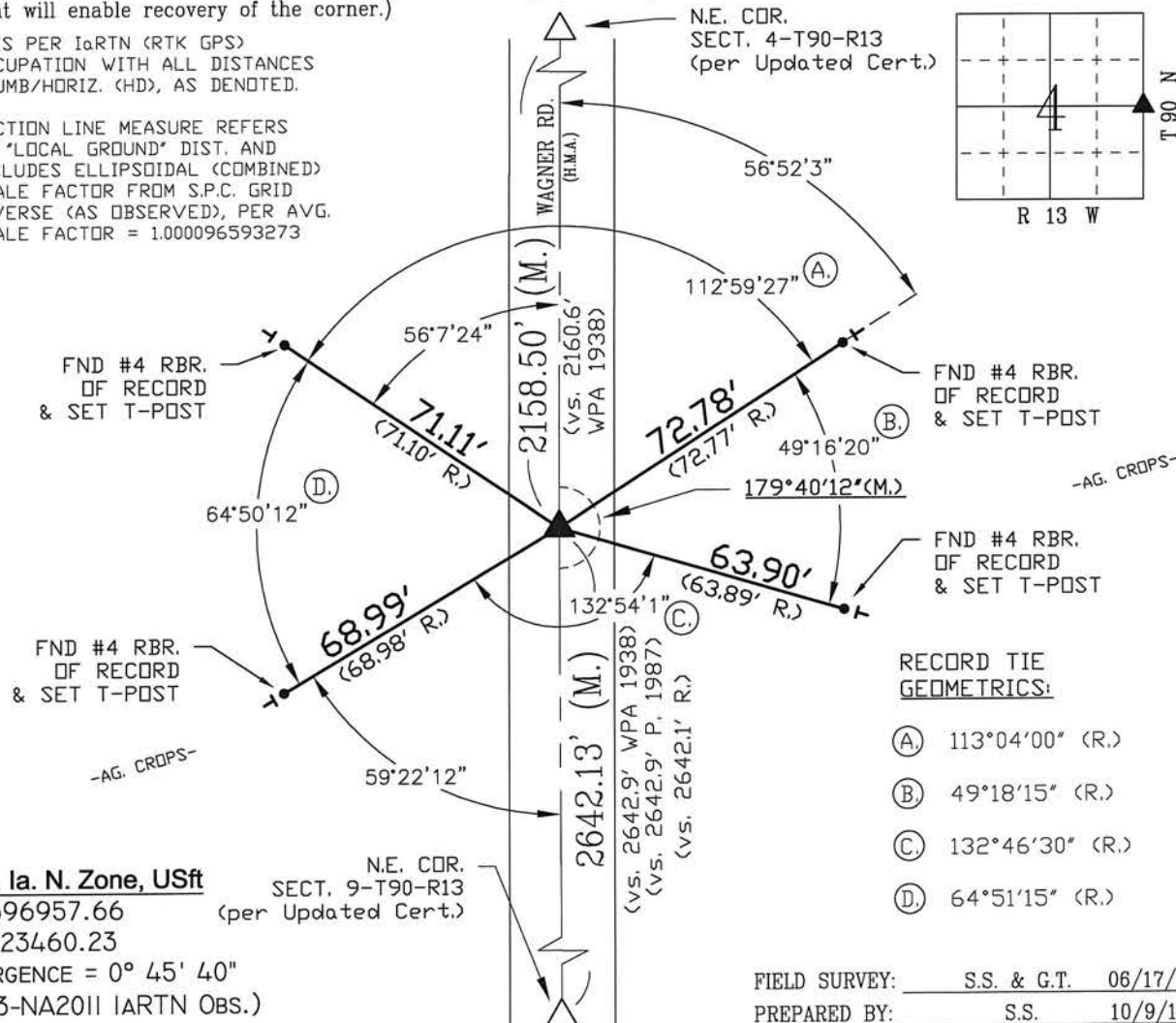
Project Point #: 1001

### PLAN VIEW

BHco Hist. Ties: BK. #1003 p.4 90-13  
FIELD BOOK: Ties per Topcon 7003i #Z0115

(Show a minimum of three reference ties to durable physical objects, relevant monuments and physical conditions that will enable recovery of the corner.)

- 1.) TIES PER IARTN (RTK GPS)  
OCCUPATION WITH ALL DISTANCES  
PLUMB/HORIZ. (HD), AS DENOTED.
- 2.) SECTION LINE MEASURE REFERS  
TO "LOCAL GROUND" DIST. AND  
INCLUDES ELLIPSOIDAL (COMBINED)  
SCALE FACTOR FROM S.P.C. GRID  
INVERSE (AS OBSERVED), PER AVG.  
SCALE FACTOR = 1.000096593273



S.P.C., Ia. N. Zone, USft

N = 3696957.66  
E = 5223460.23  
CONVERGENCE = 0° 45' 40"  
(NAD83-NA2011 IARTN OBS.)

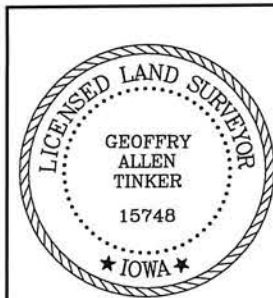
N.E. COR.  
SECT. 9-T90-R13  
(per Updated Cert.)

#### RECORD TIE GEOMETRICS:

- (A) 113°04'00" (R.)
- (B) 49°18'15" (R.)
- (C) 132°46'30" (R.)
- (D) 64°51'15" (R.)

FIELD SURVEY: S.S. & G.T. 06/17/14  
PREPARED BY: S.S. 10/9/14

### CERTIFICATION



I hereby certify that this land surveying document was prepared and the related survey work was performed by me or under my direct personal supervision and that I am a duly licensed Land Surveyor under the laws of the State of Iowa.

*Geoffrey Allen Tinker* 10/10/2014  
Geoffrey Allen Tinker (date)  
License Number 15748  
My license renewal date is December 31, 2014  
Pages or sheets covered by this seal:  
This Land Corner Certificate Only.

#### LIST CORNERS TO BE INDEXED

Corner	Section	Township	Range
E. 1/4 Cor.	4	90 N	13 W
W. 1/4 Cor.	3	90 N	13 W

#### INDEX OF ABBREVIATIONS

(M) = "Measured" Dimension  
(P) = "Platted" Dimension  
(R) = "Record" Dimension  
(C) = "Calculated" Dimension  
(G) = Iowa Geodetic Survey  
(WPA) = Works Progress Admin. Survey  
(G) = per George Miller Survey (BHco Surveyor 1858-1860)  
(B) = per John Ball Survey (BHco Surveyor 1866-1891)  
(N) = per Nathan Barber Survey (BHco Surveyor 1908-1931)  
"NP" = Reflectorless EDM Meas.  
"IM" = Indirect Measure  
"CM" = Concrete Monument  
"SM" = Survey Marker Spike/Tag  
"PK" = PK/MAG Nail Brand Style