

Paul H. Helland, 1107 Technology Parkway, Cedar Falls, Iowa 50613-6951, (319)-266-0161

UNITED STATES PUBLIC LAND SURVEY CORNER CERTIFICATE OF

LAND SURVEY MONUMENTS SITUATED IN SECTION NO. 4, TOWNSHIP NO. 90 NORTH, RANGE
NO. 13 WEST OF THE FIFTH PRINCIPAL MERIDIAN, BLACK HAWK COUNTY, IOWA.

PREVIOUSLY RECORDED IN BOOK _____, PAGE _____.

(SHOW REASON FOR PREPARING THIS CERTIFICATE, THE EVIDENCE AND DETAILED PROCEDURES USED IN ESTABLISHING THE
CORNER POSITIONS AND MONUMENTATION FOUND OR PLACED.)

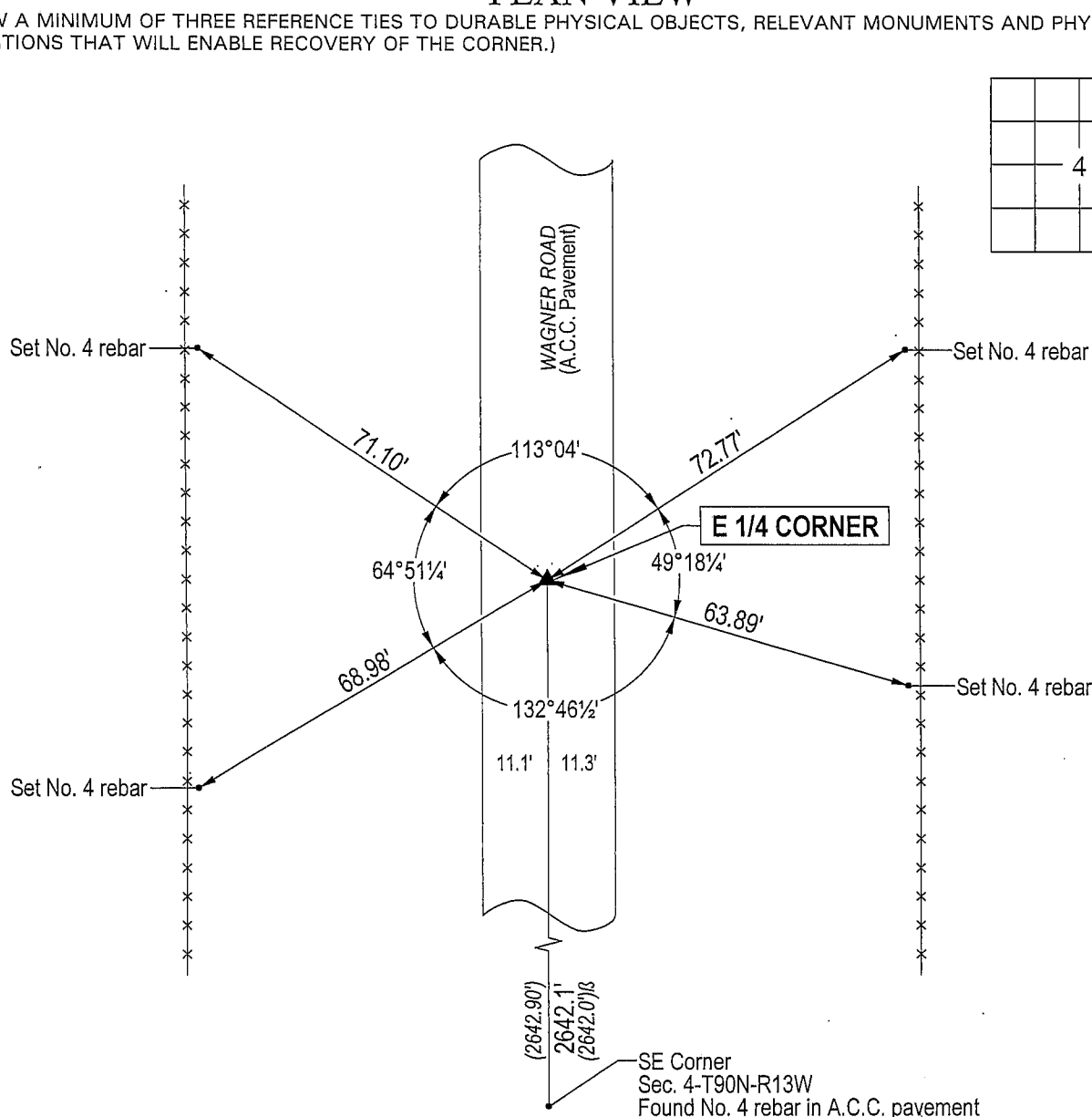
MONUMENT DESCRIPTION AND REMARKS:

No corner certificate on file. Survey completed in the SW $\frac{1}{4}$ SW $\frac{1}{4}$ of Sec. 3-T90N-R13W.

→ E 1/4 CORNER: WPA chaining notes dated 8/12/1938 calls for a (concrete monument). All reference ties from
1938 obliterated by widening of Wagner Road right-of-way. Corner was retied 8/25/1992 by Black Hawk
County Engineer prior to overlay of Wagner Road with A.C.C. pavement. All reference ties obliterated.
Found No. 4 rebar in A.C.C. pavement corresponding to WPA chaining note distance from the SE Corner of
Sec. 4-T90N-R13W.

PLAN VIEW

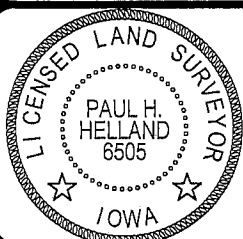
(SHOW A MINIMUM OF THREE REFERENCE TIES TO DURABLE PHYSICAL OBJECTS, RELEVANT MONUMENTS AND PHYSICAL
CONDITIONS THAT WILL ENABLE RECOVERY OF THE CORNER.)



HELLAND ENGINEERING & SURVEYING, LTD.
1107 Technology Parkway
Cedar Falls, Iowa 50613-6951
(319)-266-0161

(00.00') - Per Black Hawk County Engineer ties
(00.00')β - Per WPA chaining notes

File Name: 04-320c2.dwg



I hereby certify that this land surveying document was prepared
and the related survey work was performed by me or under my
direct personal supervision and that I am a duly licensed Land
Surveyor under the laws of the State of Iowa.

Paul H. Helland
Paul H. Helland
License Number 6505
My license renewal date is December 31, 2005.
All pages or sheets are covered by this seal except:

LIST CORNERS TO BE INDEXED
CORNER SECTION TOWNSHIP RANGE
E 1/4 CORNER 4 90N 13W

Rec