

UNITED STATES PUBLIC LAND SURVEY CORNER CERTIFICATE
OF

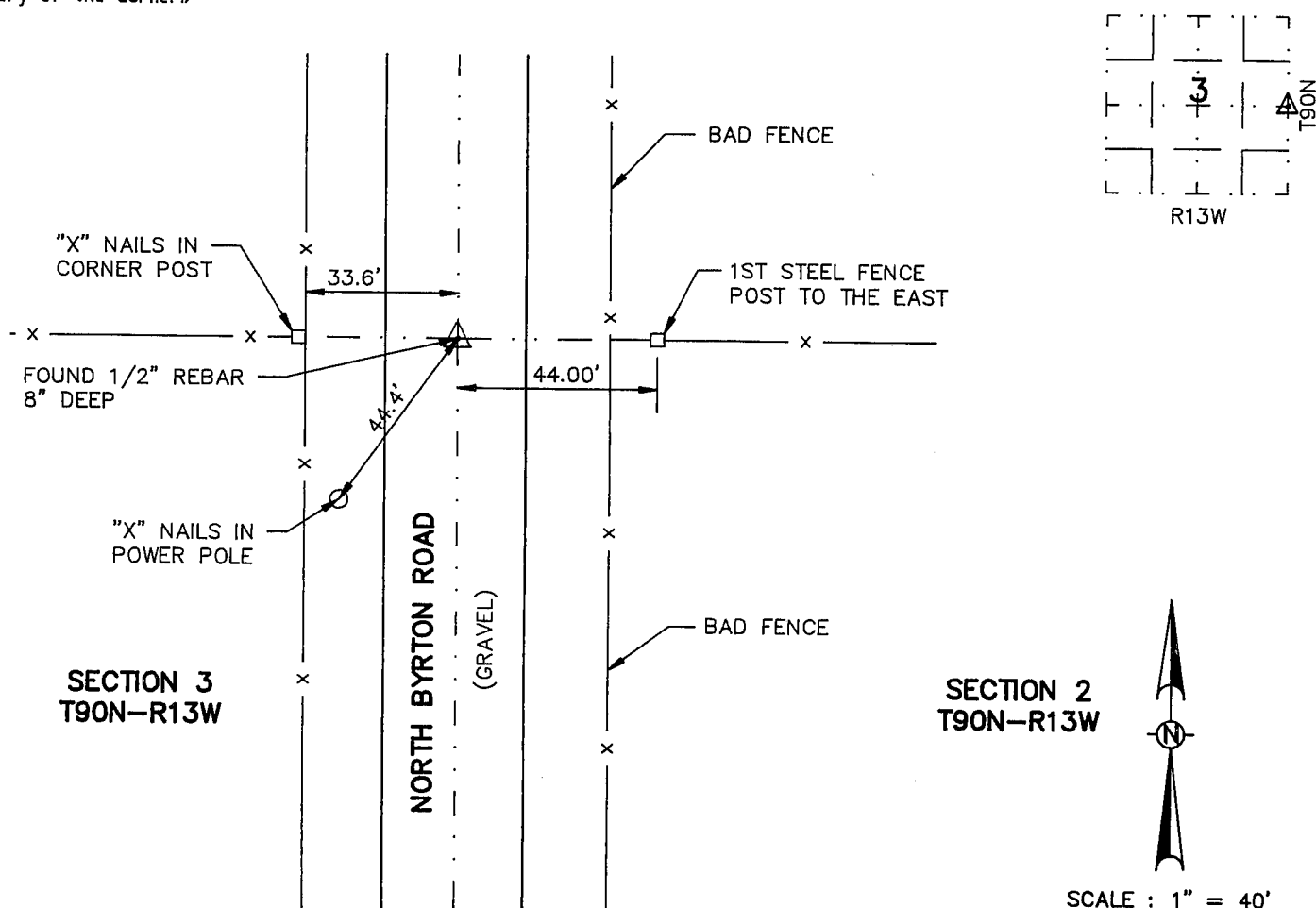
and Survey Monuments situated in Section 3, Township 90, Range 13, of the Fifth Principal Meridian, BLACK HAWK County, Iowa. Previously recorded in _____ in County Recorder's Office.

(Show reason for preparing this certificate, the evidence and detailed procedures used in establishing the corner positions and monumentation found or placed.)

Monument Description and Remarks: FOUND 1/2" REBAR 8" DEEP

PLAN - VIEW

(Show a minimum of three reference ties to durable physical objects, relevant monuments and physical conditions that will enable recovery of the corner.)



I hereby certify that the survey work was completed and this certificate was prepared by me or under my direct personal supervision and that I am a duly registered land surveyor under the laws of the state of Iowa.

Signature:

Name typed or printed: Kirk D. Eschliman

Date: JAN. 27, 1992

Reg. No.

Ia. R.L.S. 9961

Corners	List Corners to be Indexed Section	Twp	Range
E 1/4	3	90N	13W

SEAL

