

UNITED STATES PUBLIC LAND SURVEY CORNER CERTIFICATE

Land Survey Monuments situated in Section 35, Township 91 North, Range 13 West, of the Fifth Principal Meridian, Bremer County, Iowa.

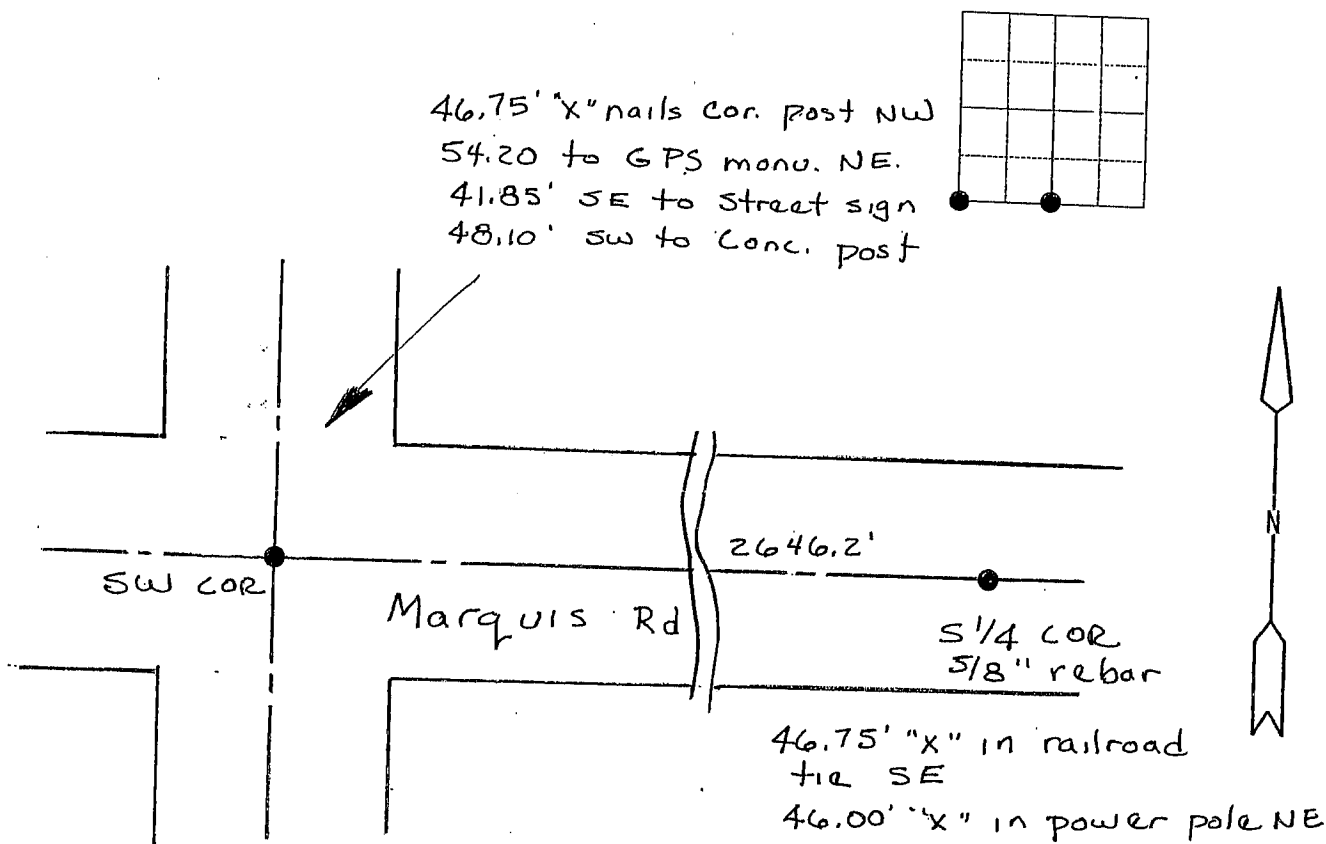
Previously recorded in (NW COR.) MISC BK 299 p. 754 in County Recorder's Office.

(Show reason for preparing this certificate, the evidence and detailed procedures used in establishing the corner positions and monumentation found or placed.)

Monument Description and Remarks: Found 5/8" rebar in center of Road.
at South 1/4 corner. Found 5/8" rebar at center of intersection
at SW corner section.

PLAN - VIEW

(Show a minimum of three reference ties to durable physical objects, relevant monuments and physical conditions that will enable recovery of the corner)



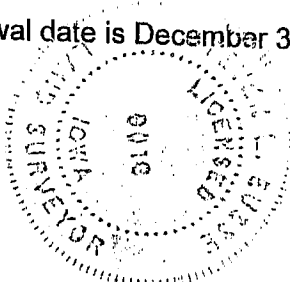
I hereby certify that the survey work was completed and this land surveying document was prepared by me or under my direct personal supervision and that I am a duly licensed land surveyor under the laws of the state of Iowa

Signature: Steve Busse
 Name typed or printed STEVE BUSSE

Date: 3/24/00 Reg. No. 9018

My license renewal date is December 31, 2000

SEAL



List Corners to be Indexed			
Corners	Section	Twp	Range
SW COR.	35	91	13
S 1/4 COR.	35	91	13
NW COR.	2	90	13
N 1/4 COR.	2	90	13

025850

INDEX
 MARGIN
 PROOF
 COMPARE

BLACK HAWK COUNTY:SS
 Filed for record JUN 13, 2000 at
4:00 P.M and recorded in Book 338
 of MISC Page 766

Chris J. Busse Recorder

Fee 1-5.00X
 BUSSE SURVEYING INC
 P O BOX 241
 ALLISON IA 50602